



117 Wharton Court Hoole Lane, Chester

Offers Over £180,000





## 117 Wharton Court Hoole Lane Chester

A beautifully presented third-floor apartment in a sought-after Redrow development overlooking the Shropshire Union Canal, featuring two double bedrooms, a bright open-plan living space with Juliet balcony, stylish kitchen with integrated appliances, and a prime location within walking distance of Hoole, Chester city centre, the railway station, and Waitrose.

Council Tax band: D

Tenure: Leasehold

EPC Energy Efficiency Rating: B

EPC Environmental Impact Rating: C

- Close To All Local Amenities & Chester Train Station, straddling the Shropshire Union canal whilst being a short walk from Waitrose
- EPC Rating B
- One Allocated underground parking space with lift access to the third floor
- Two Double Bedrooms
- Large open plan living/kitchen with a south westerly "Juliet" balcony providing fine views with additional side windows with the apartment being on the end of the block
- Main bathroom with a modern white suite, utility cupboard with housing for a washing machine with two further good sized storage cupboards
- Modern fitted kitchen with integrated appliances
- Sold with no ongoing chain





# 117 Wharton Court Hoole Lane

Chester

A beautifully presented third-floor apartment in a sought-after Redrow development overlooking the Shropshire Union Canal, featuring two double bedrooms, a bright open-plan living space with Juliet balcony, stylish kitchen with integrated appliances, and a prime location within walking distance of Hoole, Chester city centre, the railway station, and Waitrose.

Council Tax band: D

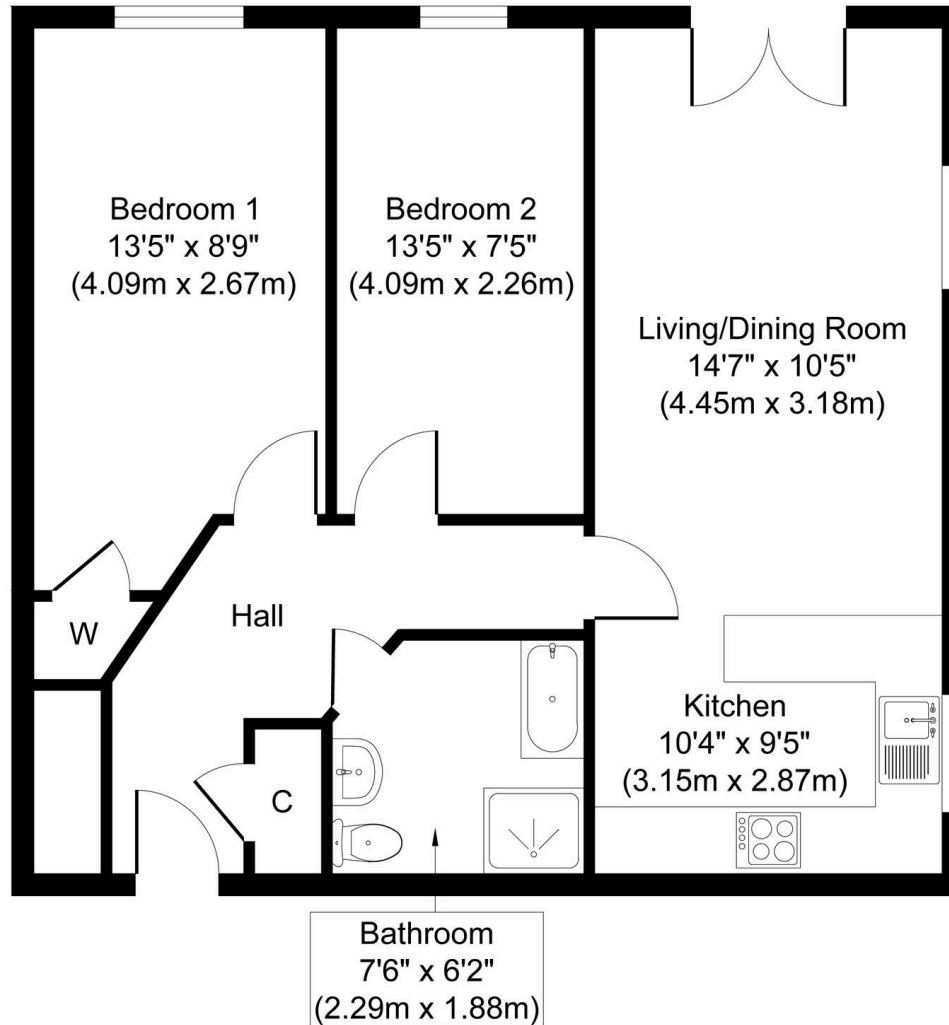
Tenure: Leasehold

EPC Energy Efficiency Rating: B

EPC Environmental Impact Rating: C

- Close To All Local Amenities & Chester Train Station, straddling the Shropshire Union canal whilst being a short walk from Waitrose
- EPC Rating B
- One Allocated underground parking space with lift access to the third floor
- Two Double Bedrooms
- Large open plan living/kitchen with a south westerly "Juliet" balcony providing fine views with additional side windows with the apartment being on the end of the block
- Main bathroom with a modern white suite, utility cupboard with housing for a washing machine with two further good sized storage cupboards
- Modern fitted kitchen with integrated appliances
- Sold with no ongoing chain





**Approximate Floor Area**  
**691 sq. ft**  
**(64.23 sq. m)**



## Currans Homes Sales

Currans Homes, 11 Grosvenor Street - CHI 2DD

01244 313900 • [sales@curranshomes.co.uk](mailto:sales@curranshomes.co.uk) • [curranshomes.co.uk/](http://curranshomes.co.uk/)