



2 Betley Terrace, Betley Lane, Bayston Hill, Shrewsbury, SY3 0HD

2 bedroom terraced house — £218,000 Freehold

2 Betley Terrace, Betley Lane, Bayston Hill, Shrewsbury, SY3 0HD

Coopergreenpooks.co.uk

£218,000 Freehold — 2 bedroom terraced house

sales@cgpooks.co.uk

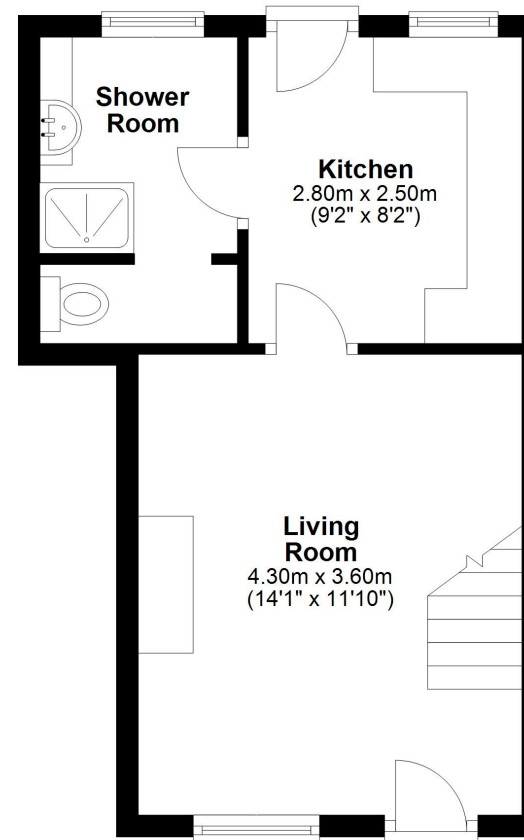
Occupying a fantastic position with stunning views over open fields and surrounding countryside, this attractive terraced cottage of character has been improved to provide beautifully presented accommodation, benefitting from an attractively landscaped rear garden.

KEY FEATURES

- Living room with feature fireplace and modern electric fire, decorative tiled entrance, and window to front
- Well-fitted kitchen with wood-effect tiled flooring and part-glazed door to the rear garden
- Ground floor shower room, also having wood-effect tiled flooring, with vanity unit and heated towel rail
- On the first floor is a master bedroom with built-in wardrobes, and a further generous bedroom with impressive views over the rear garden, surrounding countryside and Shropshire Hills
- Double glazed windows and gas fired central heating
- The private rear garden has been attractively landscaped to comprise areas of lawn, paved and gravelled terraces, planted borders, and useful timber garden store, as well as gated access to the adjoining field
- To the front of the property is a gated courtyard which has been paved for easy maintenance, with planted shrubs, picket fence, and bin store
- A very quiet and private location on Betley Lane, close to the beautiful Lyth Hill nature reserve and the excellent village amenities of Bayston Hill. Meole Brace retail park is also just a 5-minute drive from the property and Shrewsbury town centre is about 15 minutes
- This property has been recently improved, with upgrades including replacement windows to the rear, landscaping of the front and rear gardens, upgraded flooring, décor, and general maintenance throughout

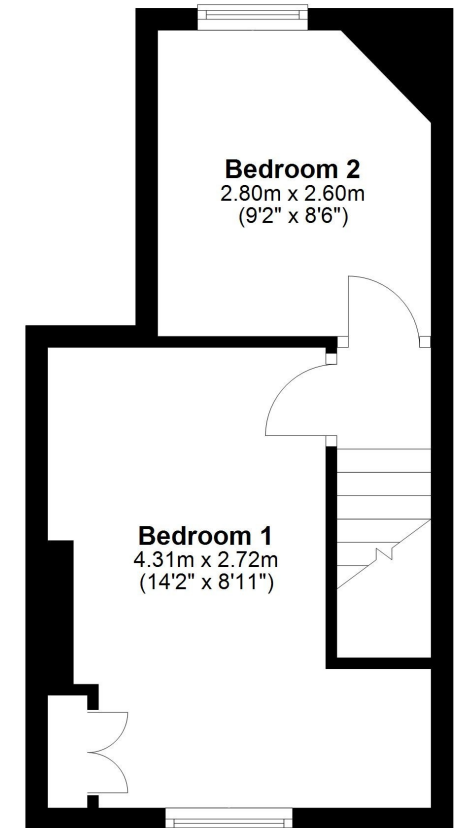
Ground Floor

Approx. 27.4 sq. metres (294.4 sq. feet)



First Floor

Approx. 21.9 sq. metres (236.2 sq. feet)



Total area: approx. 49.3 sq. metres (530.6 sq. feet)









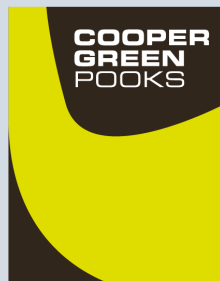
rightmove 

 nTheMarket.com

 **RICS**
Regulated by RICS

Cooper Green Pooks
3 Barker Street
Shrewsbury
SY1 1QF

www.cgpooks.co.uk
sales@cgpooks.co.uk
01743 276666



 **mortgage advice available**
3 Barker St, Shrewsbury SY1 1QF
Cooper Green Pooks
01743 276666



Your home may be repossessed if you do not keep up repayments on your mortgage.
There may be a fee for mortgage advice. The actual amount you pay will depend upon your circumstances. The fee is up to 1% but a typical fee is 0.3% of the amount borrowed.

2 Betley Terrace, Betley Lane, Bayston Hill, Shrewsbury, SY3 0HD

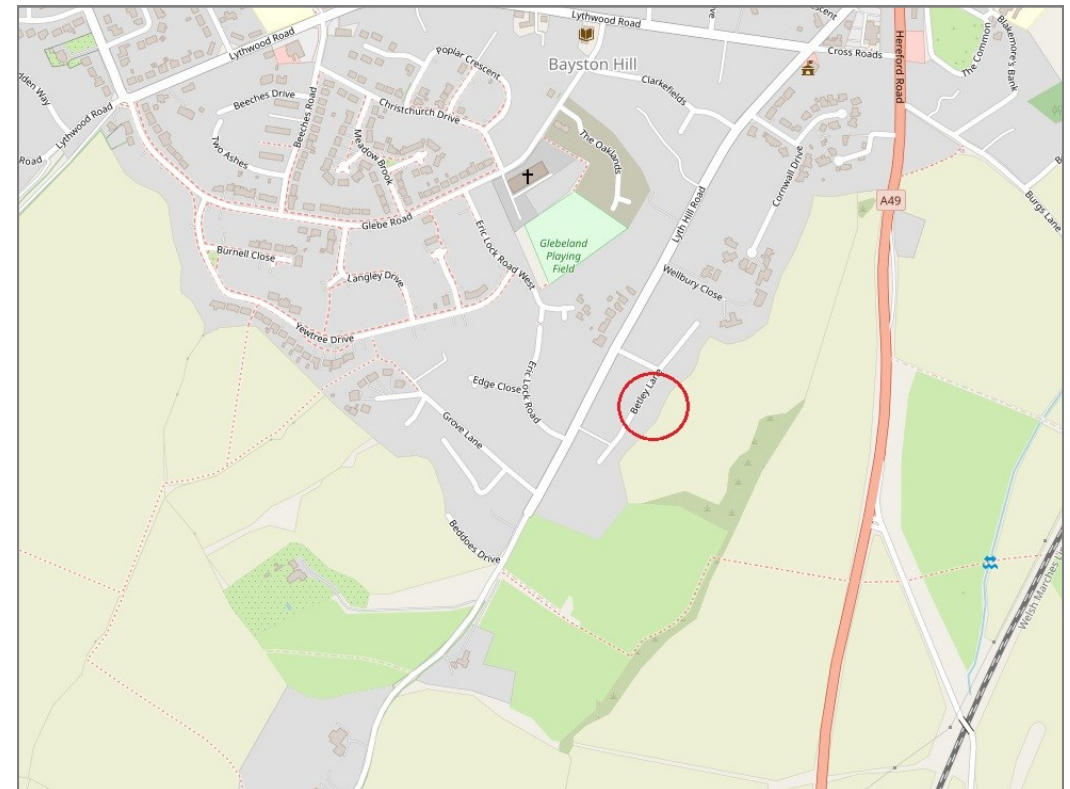
£218,000 Freehold — 2 bedroom terraced house

sales@cgpooks.co.uk

rightmove 

 OnTheMarket.com

 **RICS**
Regulated by RICS



BOUNDARIES NOT CONFIRMED

Tenure	Freehold
Local Authority	Shropshire Council
Council Tax	Band B
EPC Band	Band D
Services	All mains services are connected

 **Expert mortgage advice available**

3 Barker St, Shrewsbury SY1 1QF

Cooper Green Pooks
01743 276666



Your home may be repossessed if you do not keep up repayments on your mortgage.

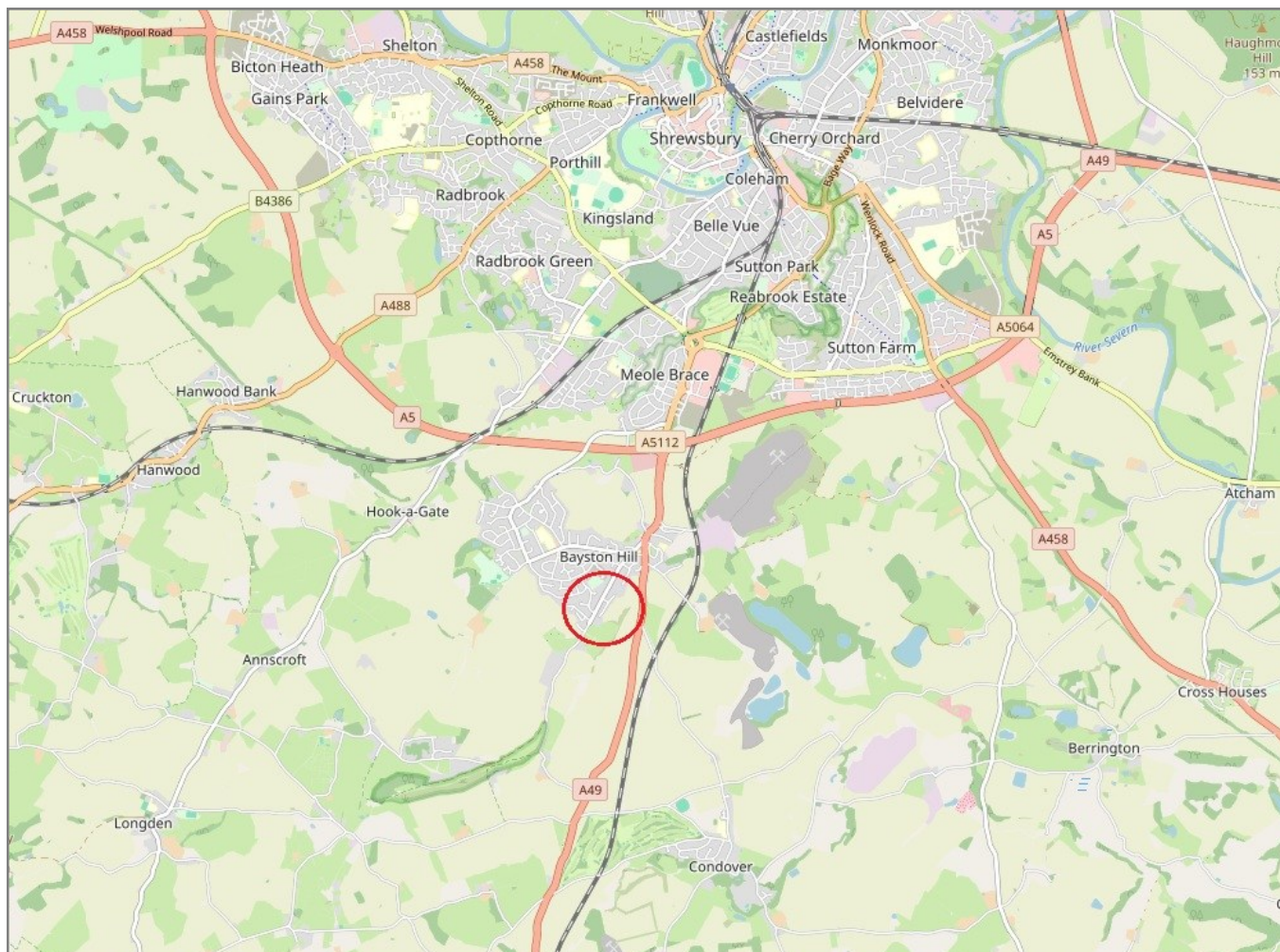
There may be a fee for mortgage advice. The actual amount you pay will depend upon your circumstances. The fee is up to 1% but a typical fee is 0.3% of the amount borrowed.

2 Betley Terrace, Betley Lane, Bayston Hill, Shrewsbury, SY3 0HD

Coopergreenpooks.co.uk

£218,000 Freehold — 2 bedroom terraced house

sales@cgpooks.co.uk



IMPORTANT NOTICE: Cooper Green Pooks for themselves and for the lessors or vendors of this property whose agents they are give notice that: 1 No appliances, services or service installations have been tested and no warranty as to suitability or serviceability is implied. Any prospective purchaser or lessee is advised to obtain verification from their surveyor or solicitor. 2. The particulars are set out as a general outline only for the guidance of the intended purchasers or lessees and do not constitute, nor constitute part of, an offer or contract. 3. All descriptions, reference to condition and necessary permissions for use and occupation and other details are given in good faith and are believed to be correct but any intending purchasers or lessees should not rely on them as statements or representation of fact but satisfy themselves by inspection or otherwise as to the correctness of each of them. 4. No person in the employment of Cooper Green Pooks has any authority to make or give any representation or warranty whatsoever in relation to this property. 5. All rentals and prices are quoted exclusive of Stamp Duty, legal and surveyors fees and any other associated purchasers or lessees costs. 6. Floor plans are indicative only and should not be relied on. 7. The plan showing the boundary of the property is indicative only and has not been checked against the legal title so should not be relied on. 8. All dimensions, floor areas and site areas are only approximate and should not be relied on. Dimensions are generally maximum room dimension.