



Wharf House Waterside, Shirley Solihull B90 1UE

welcome to

Wharf House Waterside, Shirley Solihull

A modern two-bedroom first-floor apartment located in the sought-after Wharf House development in Dickens Heath, Solihull, featuring a spacious open-plan living area, en-suite to the principal bedroom, and a prime village-centre location close to local amenities and transport links.

Kitchen/Dining Room

30' 4" x 17' 3" (9.25m x 5.26m)

Two double glazed windows, carpet and two radiators. Fully fitted modern kitchen, with wall, and base units, stainless steel sink with mixer tap, hob, oven and extractor.

Bedroom One

17' 1" x 8' 4" (5.21m x 2.54m)

Fitted wardrobes, patio doors, carpet and radiator.

Ensuite

6' 9" x 4' 10" (2.06m x 1.47m)

Toilet, sink, shower cubicle with tiled walls, heated towel rail, tiled floor and half tiled wall and double-glazed window

Bedroom Two

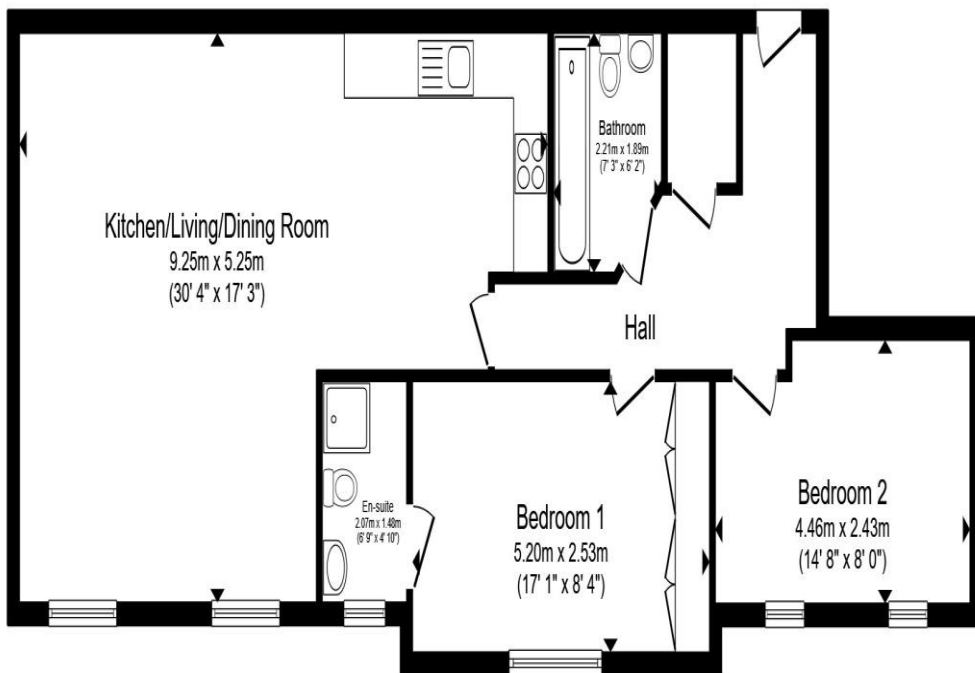
14' 8" x 8' (4.47m x 2.44m)

Carpet and radiator.

Bathroom

7' 3" x 6' 2" (2.21m x 1.88m)

Toilet, sink, bath with shower over, heated towel radiator. tiled flooring and half tiled walls.



Floor Plan

Total floor area 82.2 m² (885 sq.ft.) approx

This floor plan is for illustrative purposes only. It is not drawn to scale. Any measurements, floor areas (including any total floor area), openings and orientation are approximate. No details are guaranteed, they cannot be relied upon for any purpose and they do not form part of any agreement. No liability is taken for any error, omission or misstatement. A party must rely upon its own inspection(s). Powered by www.propertybox.io



welcome to

Wharf House Waterside, Shirley Solihull

- Two-bedroom
- First floor apartment
- Spacious open-plan kitchen/living/dining room
- Principal bedroom with en-suite shower room
- Modern family bathroom

Tenure: Leasehold EPC Rating: B

Council Tax Band: D Service Charge: Ask Agent

Ground Rent: Ask Agent

This is a Leasehold property. We are awaiting further details about the Term of the lease. For further information please contact the branch. Please note additional fees could be incurred for items such as Leasehold packs.

£194,950



view this property online shipways.co.uk/Property/SLY112279



Property Ref:
SLY112279 - 0002

1. MONEY LAUNDERING REGULATIONS Intending purchasers will be asked to produce identification documentation at a later stage and we would ask for your co-operation in order that there is no delay in agreeing the sale. 2. These particulars do not constitute part or all of an offer or contract. 3. The measurements indicated are supplied for guidance only and as such must be considered incorrect. Potential buyers are advised to recheck measurements before committing to any expense. 4. We have not tested any apparatus, equipment, fixtures or services and it is in the buyers interest to check the working condition of any appliances. 5. Where an EPC, or a Home Report (Scotland only) is held for this property, it is available for inspection at the branch by appointment. If you require a printed version of a Home Report, you will need to pay a reasonable production charge reflecting printing and other costs. 6. We are not able to offer an opinion either written or verbal on the content of these reports and this must be obtained from your legal representative. 7. Whilst we take care in preparing these reports, a buyer should ensure that his/her legal representative confirms as soon as possible all matters relating to title including the extent and boundaries of the property and other important matters before exchange of contracts.

Shipways is a trading name of Sequence (UK) Limited which is registered in England and Wales under company number 4268443, Registered Office is Cumbria House, 16-20 Hockliffe Street, Leighton Buzzard, Bedfordshire, LU7 1GN. VAT Registration Number is 500 2481 05.



0121 744 4595



shirley@shipways.co.uk



208 Stratford Road, Shirley, SOLIHULL, West
Midlands, B90 3AG



shipways.co.uk