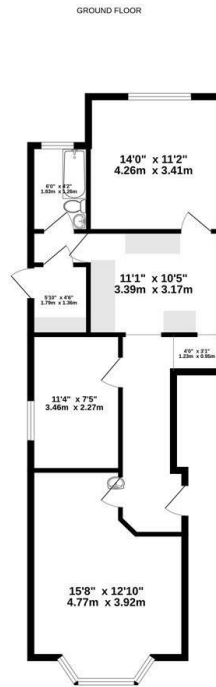




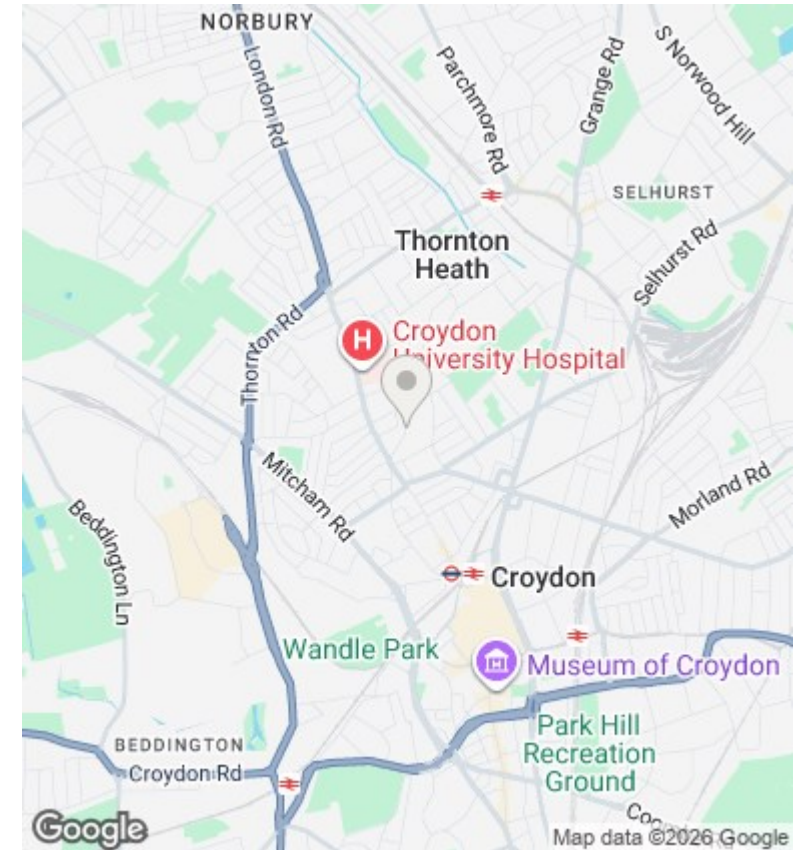
Ground Floor Flat, 60 Bensham Lane, Croydon, CR0 2RR

£300,000

- Ground floor flat
- Large fitted kitchen
- Private rear garden
- Close to local amenities and transport links
- Two double bedrooms
- Separate utility area
- Rear access/off-street parking potential
- Spacious living room
- Good-sized bathroom
- Excellent layout throughout



Whilst every attempt has been made to ensure the accuracy of the floorplan contained here, measurements of doors, windows, rooms and any other items are approximate and no responsibility is taken for any error, omission or misstatement. This plan is for illustrative purposes only and should be used as such to any prospective purchaser. The services, systems and appliances shown have not been tested and no guarantee as to their operability or efficiency can be given.
Made with iMeasure 12/2016



Directions

Viewings

Viewings by arrangement only. Call 0208 681 8133 to make an appointment.

Council Tax Band

B

EPC Rating:

D

Energy Efficiency Rating		Current	Potential
<i>Very energy efficient - lower running costs</i>			
(92 plus) A			
(81-91) B			
(69-80) C			77
(55-68) D		62	
(39-54) E			
(21-38) F			
(1-20) G			
<i>Not energy efficient - higher running costs</i>			
England & Wales		EU Directive 2002/91/EC	