



## 2 Lecondale Court, Gateshead, NE10 8QX

£59,950

Welcome to this ideally located ground floor apartment in Lecondale Court, Gateshead. This charming flat boasts its own private entrance, providing a sense of independence and comfort. As you step inside, you will find a spacious lounge that features a remote-controlled fire, perfect for creating a warm and inviting atmosphere. The kitchen is well-equipped with an integrated oven, making it a delightful space for cooking and entertaining. An internal hallway leads you to two generously sized double bedrooms, both of which come with built-in storage cupboards, ensuring ample space for your belongings. The bathroom is conveniently situated, adding to the practicality of this lovely home. One of the standout features of this property is the private patio garden at the front, offering a wonderful outdoor space to relax and enjoy the fresh air. This flat is perfect for those seeking a comfortable and convenient lifestyle in a desirable location. Viewings are highly recommended to fully appreciate all that this property has to offer. Don't miss the opportunity to make this delightful apartment your new home.

## LOUNGE

16'4" x 15'0" (5.00m x 4.58m)



## BEDROOM TWO

10'8" x 9'10" (3.26m x 3.00m)



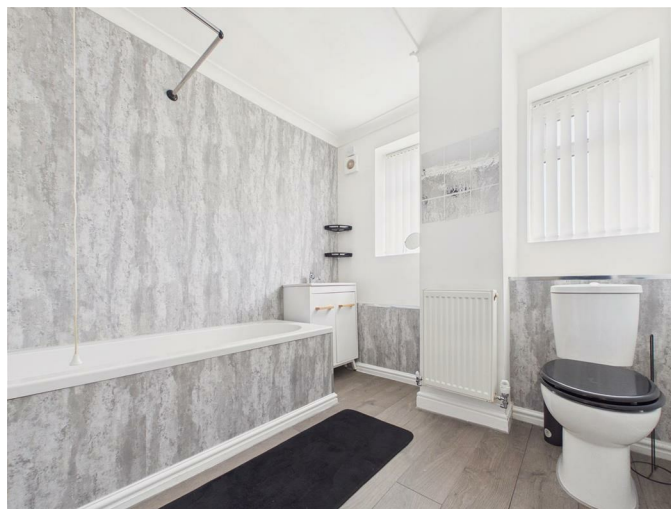
## KITCHEN

8'9" x 8'4" (2.67m x 2.56m)

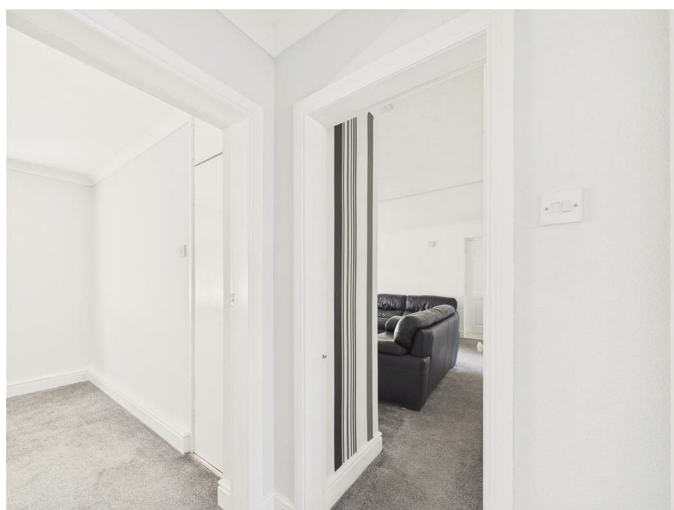


## BATHROOM

8'3" x 7'10" (2.52m x 2.39m)



## INTERNAL HALLWAY



## BEDROOM ONE

13'3" x 10'0" (4.06m x 3.05m)



## EXTERNAL



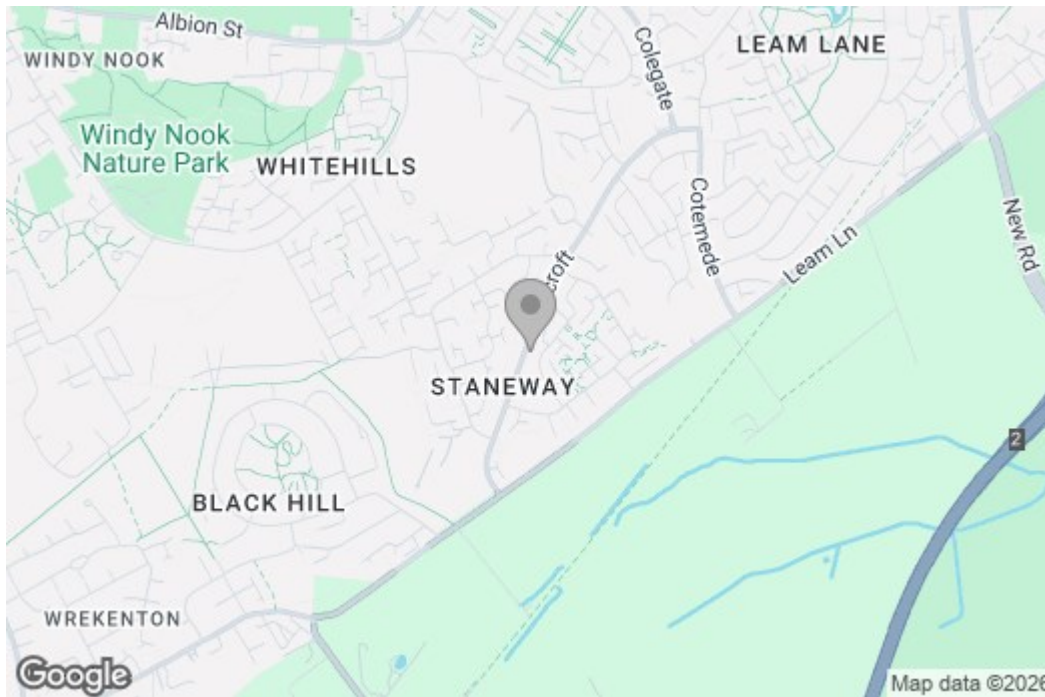
## Property disclaimer

**IMPORTANT NOTE TO PURCHASERS:** We endeavour to make our sales particulars accurate and reliable, however, they do not constitute or form part of an offer or any contract and none is to be relied upon as statements of representation or fact. The services, systems and appliances listed in this specification have not been tested by us and no guarantee as to their operating ability or efficiency is given. All measurements have been taken as a guide to prospective buyers only, and are not precise. Floor

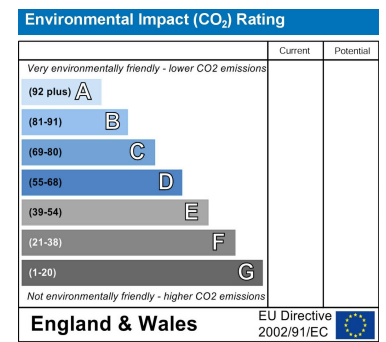
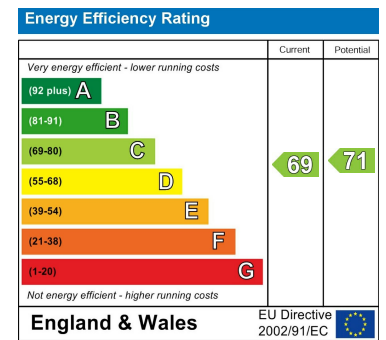
plans where included are not to scale and accuracy is not guaranteed. If you require clarification or further information on any points, please contact us, especially if you are travelling some distance to view. Fixtures and fittings other than those mentioned are to be agreed with the seller. We cannot also confirm at this stage of marketing the tenure of this house.

# Floor Plan

## Area Map



## Energy Efficiency Graph



These particulars, whilst believed to be accurate are set out as a general outline only for guidance and do not constitute any part of an offer or contract, purchaser should not rely on them as statements of representation of fact, but must satisfy themselves by inspection or otherwise as to their accuracy. No person in this firm's employment has the authority to make or give an representation or warranty in respect of the property.