



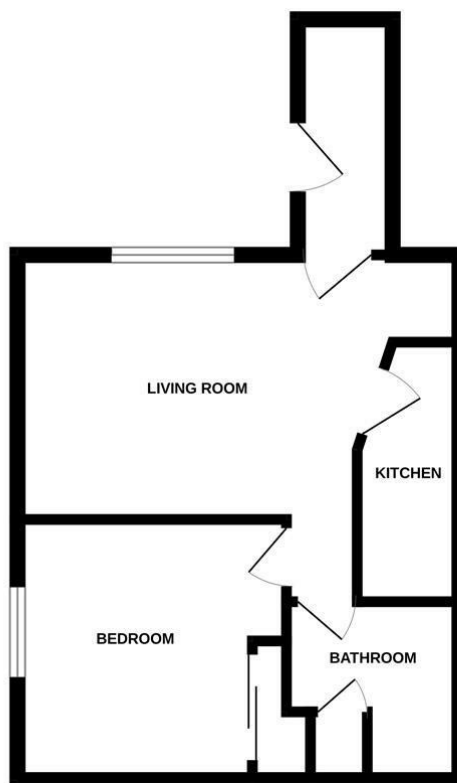
48 Murray Terrace, Smithton,  
Inverness, IV2 7WX



- One bedroom ground floor flat
- Ideal first time buy or investment property
- Newly fitted kitchen and bathroom
- Lounge, kitchen, double bedroom, bathroom
- Close to UHI campus and local amenities
- EPC Band C



GROUND FLOOR



Offers Over £100,000

CONTACT

The Greenhouse Beechwood  
Business Park  
Inverness  
Highland  
IV2 3BL

EMAIL

info@tailormademoves.co.uk

TELEPHONE

01463 233218

SUMMARY

This well presented one bedroom flat, located in the popular residential area of Murray Terrace, offers an excellent opportunity for first time buyers or investors. Situated on the ground floor, the property features its own private entrance and allocated off street parking. The accommodation includes a bright and spacious lounge, ideal for relaxing or entertaining a recently fitted kitchen complete with an integrated electric hob, oven, extractor fan, fridge/freezer and washing machine. The double bedroom benefits from a built in wardrobe, while the hallway provides additional storage with a useful cupboard. A modern, newly installed bathroom suite completes the interior. Further features include double glazing and an upgraded electric heating system. With its convenient location close to the UHI campus, appealing layout, and modern upgrades, this property represents an ideal purchase for those seeking a comfortable home or a strong rental investment.

Extras: Add text here

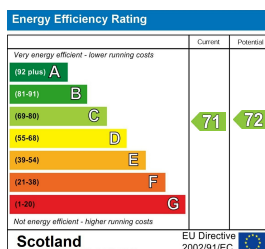
Services: Add text here

Council Tax: B

Floor Area: 409.03 sq ft

Date of Entry: Add text here

Viewing: Don't delay – get in touch with Tailormade Moves today to arrange a viewing



EPC Rating: C  
Council Tax Band: B