



Shottenden Road, Gillingham ME7 1QX

£542 Per Calendar Month

CR Real Estate are delighted to offer this STUDENT ONLY property. Two rooms available in this house. Room THREE, is situated at the back of the house upstairs, and is a double size room. Offered furnished. The communal areas consist of lounge/diner/kitchen, ground floor cloakroom, and upstairs bathroom. Rear garden. Garage for storage. Close to Uni, motorway links, town centre and train station.

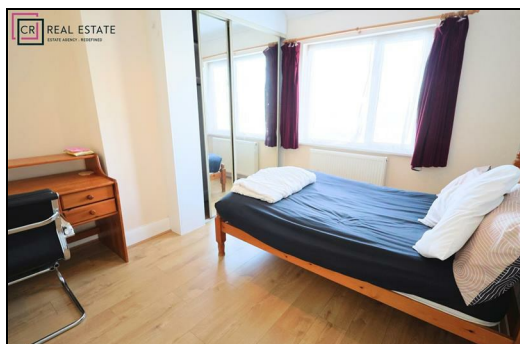
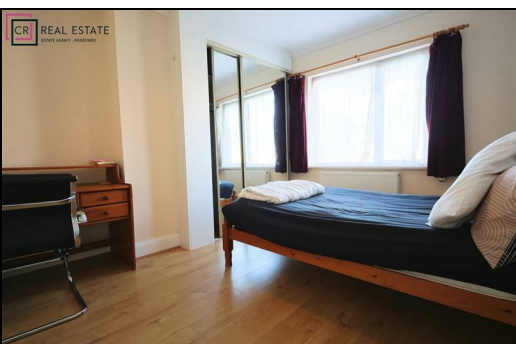
MEASUREMENTS:

- Bedroom One: 3.34m x 3.55m
- Bedroom Three: 2.63m x 3.67m
- Lounge/Diner 5.08m x 3.67m
- Kitchen 3.84m x 2.10m
- Bathroom 1.76m x 2.39m
- Cloakroom unmeasured

CR Real Estate are part The Ombudsman Redress Scheme and are a member of the Propertymark Client Money Protection Scheme. Tenant deposits are protected by the Tenancy Deposit Scheme. For more information, please contact us.

Client Money Protection is provided by: Client Money Protect. Scheme Ref: CMP004209

Independent redress is provided by: The Property Ombudsman (TPO). Membership Number: E01687



Energy Efficiency Rating		
	Current	Potential
Very energy efficient - lower running costs		
(92 plus) A		
(81-91) B		
(69-80) C		
(55-68) D		
(39-54) E		
(21-38) F		
(1-20) G		
Not energy efficient - higher running costs		
England & Wales	EU Directive 2002/91/EC	

Environmental Impact (CO ₂) Rating		
	Current	Potential
Very environmentally friendly - lower CO ₂ emissions		
(92 plus) A		
(81-91) B		
(69-80) C		
(55-68) D		
(39-54) E		
(21-38) F		
(1-20) G		
Not environmentally friendly - higher CO ₂ emissions		
England & Wales	EU Directive 2002/91/EC	



ESTATE AGENCY : REDEFINED

