

Parrington House, Oaklands Estate London, SW4 8AH
£4,500 Per month

TO LET

Gray's
RESIDENTIAL

- Four double bedroom apartment in Clapham South
- Separate fully fitted kitchen with ample storage
- Ideal for professional sharers
- Moments from Abbeville Village cafés, shops & restaurants
- Spacious reception room with private balcony
- Two bathrooms (main bathroom + shower room)
- 10-minute walk to Clapham South Underground
- Close to Clapham Common and excellent local amenities

THE PROPERTY

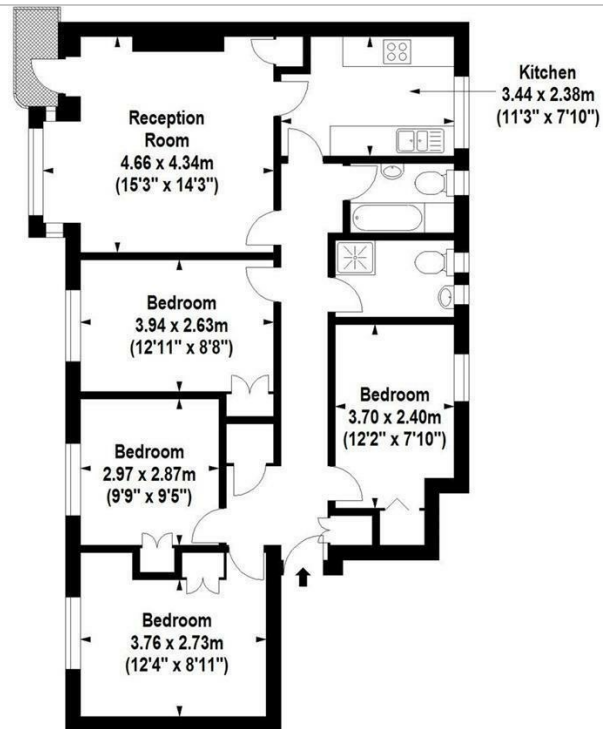
A well-presented and generously proportioned four double bedroom apartment available to rent in the highly sought-after Clapham South / Abbeville Village area, SW4. Situated within Parrington House, this bright and naturally decorated property offers the perfect balance of space, comfort and convenience, ideal for professional sharers seeking a high-quality home in South West London.

This large four-bedroom flat in Clapham South benefits from excellent natural light throughout and a practical, well-laid-out floorplan, comprising, a spacious reception room with direct access to a private balcony, separate fully fitted kitchen with ample storage and worktop space, Four well-proportioned double bedrooms, ideal for sharers, modern three-piece bathroom suite and an additional separate shower room for added convenience

The property is perfectly located just a 10-minute walk from Clapham South Underground Station (Northern Line), providing fast and direct access into Central London including areas such as the City, West End and London Bridge.

Residents will enjoy immediate proximity to the ever-popular Abbeville Village, known for its vibrant selection of independent cafés, restaurants, bars and boutique shops, making it one of the most desirable pockets of Clapham.

Available Immediately | Furnished



First Floor

For Identification Purposes Only. Not To Scale. © www.totalvista.uk 2017

Parrington House,
Oaklands Estate, SW4

Approx. Gross Internal Area
91.69 Sq M - 987 Sq Ft

TOTALVISTA

