

15-17 Eastgate Street, Bury St. Edmunds, Suffolk, IP33 1XX  
Tel: 01284 760770  
bury@shiresestateagents.co.uk  
www.shiresresidential.com

shires

Estate & Letting Agents



## Springfield Road, Bury St. Edmunds, Suffolk, IP33 3AR

Rent - £1,150 PCM      Deposit - £1,326

This period town house is located in a popular residential area just off the town centre and close to amenities and the train station. Property benefits from two double bedrooms, two reception rooms and cellar that has been separated into two rooms. There is a long rear garden with terraced area.

- PERIOD TOWN HOUSE
- 2 DOUBLE BEDROOMS
- 2 RECEPTION ROOMS
- FAMILY BATHROOM & CELLAR
- REAR GARDEN
- CLOSE TO TOWN CENTRE
- GAS HEATING & ENERGY RATING - E
- APPROXIMATE SIZE - 1001 SQFT
- COUNCIL TAX BAND - B
- AVAILABLE APRIL

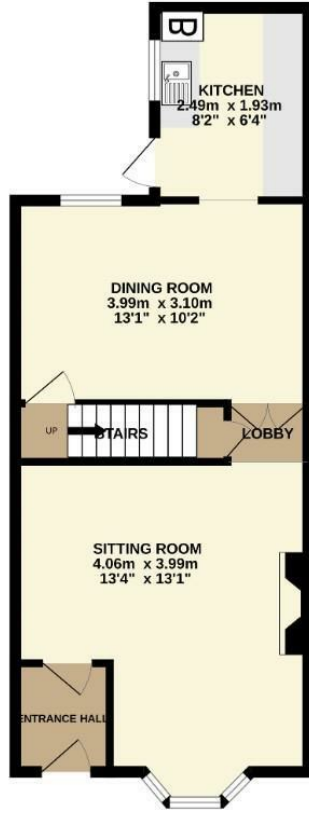


Council Tax Band: B - EPC Rating: E 54

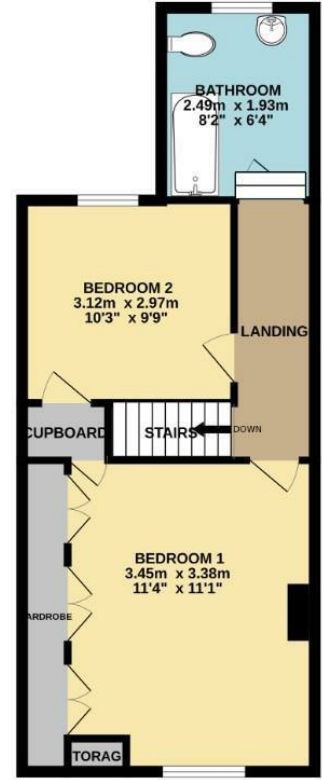
BASEMENT LEVEL



GROUND FLOOR



1ST FLOOR



Whilst every attempt has been made to ensure the accuracy of the floorplan contained here, measurements of doors, windows, rooms and any other items are approximate and no responsibility is taken for any error, omission or mis-statement. This plan is for illustrative purposes only and should be used as such by any prospective purchaser. The services, systems and appliances shown have not been tested and no guarantee as to their operability or efficiency can be given.  
Made with Metropix ©2025

