



Apartment 7 Handley House, 19 Glenthorne Road, London,
W6 0EF

 2  2  1  C

A spacious two-bedroom apartment set within a highly regarded St George development in the heart of Hammersmith, offering a private balcony and premium resident facilities.

The property features a bright open-plan living space with floor-to-ceiling windows and direct balcony access, finished to a high specification throughout. The principal bedroom includes an en-suite, with a further modern bathroom serving the second bedroom.

*Photos of the bedroom have been digitally dressed.

Residents benefit from 24-hour concierge and security, a gym, and communal gardens.

Moments from Hammersmith Station with excellent transport links and amenities.

Rarely available at this size within the development.

Leasehold: 987 Years remaining approximately

Ground rent amount: £600pa

Review period: Ask agent

Service charge amount: £4,996.74pa

Review period: Ask Agent

Council tax band: F – Hammersmith and Fulham

Electricity supply – Mains | Heating, Hot Water – Electric | Water Supply & Sewerage – Mains | Lift Access | Cladding: EWS1 Ask Agent

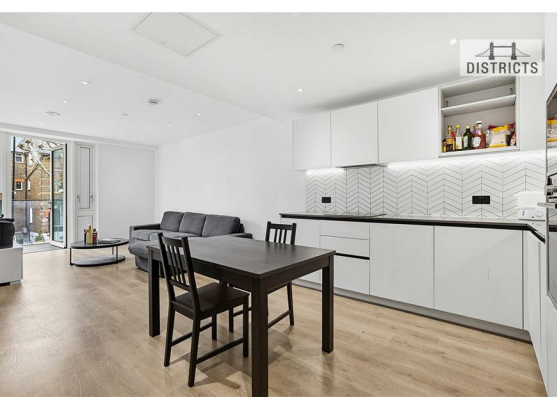
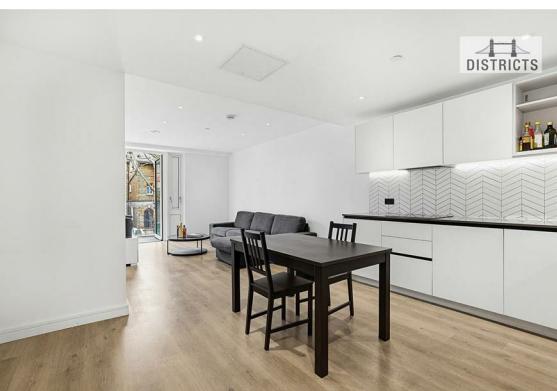
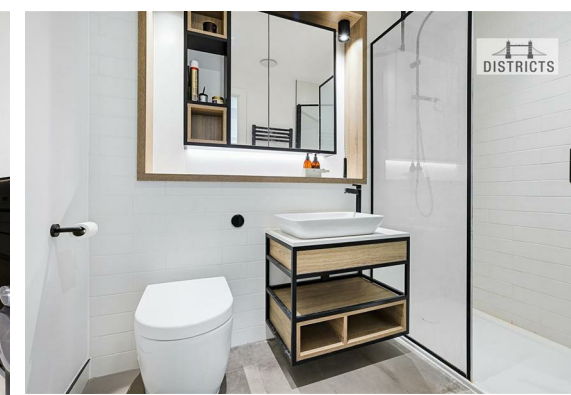
To check broadband and mobile phone coverage please visit Ofcom

To check planning permission please visit

Hammersmith and Fulham Council

Website, Planning & Building Control

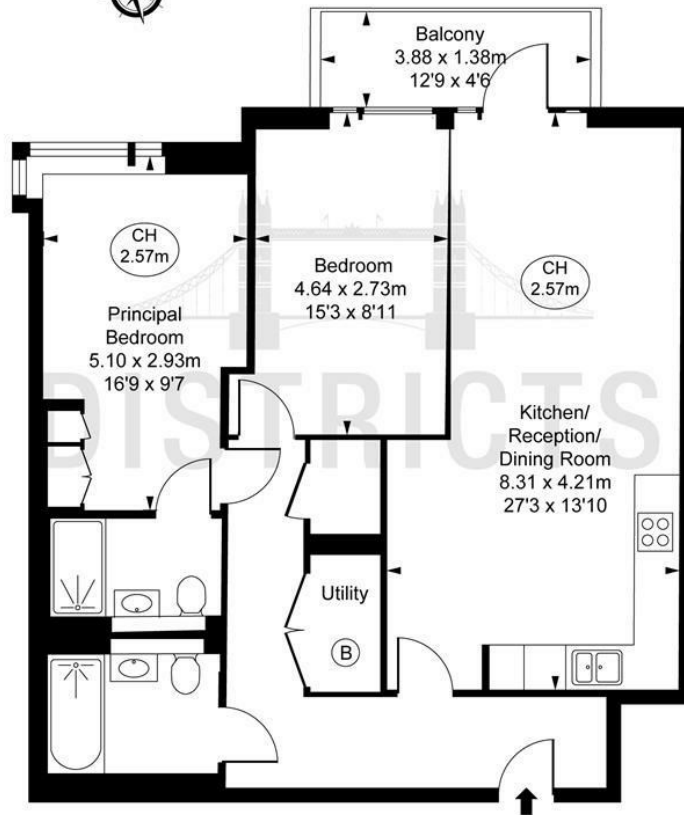





Handley House,
 Glenthorne Road, W6
 Approximate Gross Internal Area
 83.86 sq m / 903 sq ft



(CH = Ceiling Heights)



This plan is not to scale. It is for guidance and not for valuation purposes.
 All measurements and areas are approximate only, and have been prepared in accordance with the current edition of the RICS Code of Measuring Practice.
 © Fulham Performance

Energy Efficiency Rating		
	Current	Potential
Very energy efficient - lower running costs		
(92 plus) A		
(81-91) B		
(69-80) C	80	80
(55-68) D		
(39-54) E		
(21-38) F		
(1-20) G		
Not energy efficient - higher running costs		
England & Wales	EU Directive 2002/91/EC 	

These particulars, whilst believed to be accurate are set out as a general outline only for guidance and do not constitute any part of an offer or contract. Intending purchasers should not rely on them as statements of representation of fact, but must satisfy themselves by inspection or otherwise as to their accuracy. No person in this firm's employment has the authority to make or give any representation or warranty in respect of the property.