



Lycett Place, W12

£784 Per week

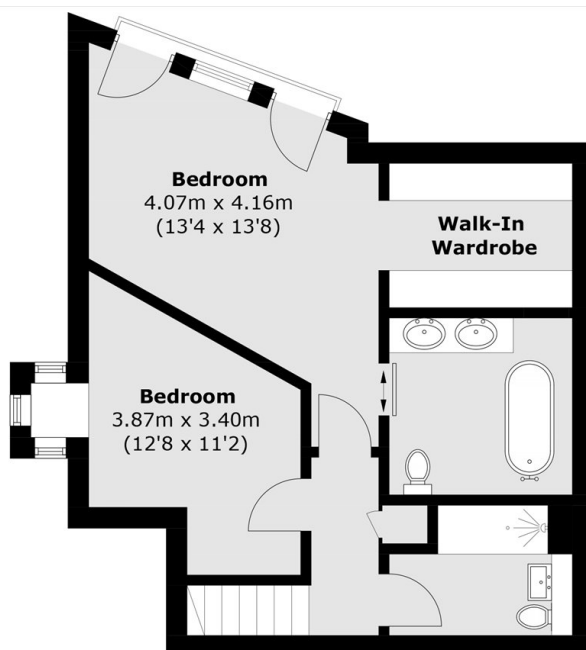
A stylish two-bedroom mews house on Lycett Place, W12, offering a bright open-plan living area, modern kitchen, and two well-sized bedrooms. Tucked within a quiet cobbled mews and moments from Shepherd's Bush amenities and transport links, this home blends contemporary comfort with classic charm.

Lycett Place is an architect-designed mews tucked between Goldhawk Road and Uxbridge Road, with very good transport links: Shepherd's Bush Market (Hammersmith & City / Circle), Goldhawk Road tube (Circle / Hammersmith & City), and Shepherd's Bush (Central & Overground).

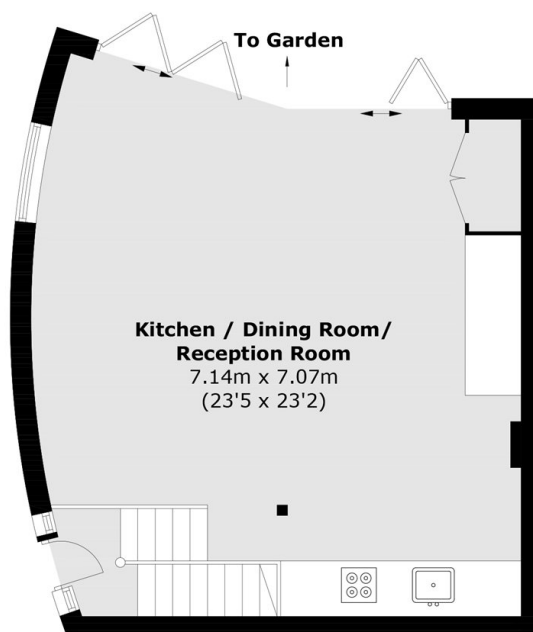
Features

- Mews House
- Gated Development
- Two Double Bedrooms
- Rear Patio
- Ample Storage
- Modern Spec

Lycett Place, London, W12



First Floor



Ground Floor

Total area (approx.): 100.7 sq. m (1,084.0 sq. ft)