

# Barratt Last

ESTATE AGENTS

0121 776 5744



**39 WHITTLEFORD GROVE, CASTLE BROMWICH, B36 9SL**  
**£305,000 - FREEHOLD**

- Modern Freehold Link-Detached
- Three Bedrooms
- Central Heating
- Side Garage
- Pleasant Cul-de-sac Location
- Two Reception Rooms
- Double Glazing
- No On-going Chain

301-303 Chester Road, Castle Bromwich, Birmingham, B36 0JG Email: [sales@barrattlast.co.uk](mailto:sales@barrattlast.co.uk)

Barratt Last Estate Agents is the trading name of Barratt Last (Estate Agents) Limited, registered in England number 6288672.  
Registered office: 11 Aldergate, Tamworth, Staffordshire B79 7DL.  
A list of Directors is available for inspection at registered office.



## **GROUND FLOOR**

### **Enclosed Porch Entrance**

Double glazed entrance door, side double glazed window panels.

### **Hallway**

Central heating radiator.

### **Lounge**

15'1" x 11'1" (4.6 x 3.38)

Double glazed bow window to fore, central heating radiator, shaped 'Adams' style fireplace, 'coal effect' fire, understairs store cupboard.

### **Dining Room**

14'5" x 8'5" (4.4 x 2.59)

Double glazed window, central heating radiator, French door and side window panel to:-

### **Conservatory**

Windows and door to rear garden.

### **Fitted Kitchen**

12'11" x 7'5" (3.96 x 2.27)

Matching base and wall units, roll edge work surfaces, single drainer sink, 'built-in' oven and 4 ring hob unit with cooker hood air extractor fan above, part tiled walls, double glazed window, 'Vaillant' wall mounted gas fired central heating boiler, air extractor fan, laminate floor covering, door to side garage.

## **FIRST FLOOR**

### **Landing**

Side double glazed window, airing cupboard, loft access.

### **Bedroom 1**

12'9" x 8'2" (3.89 x 2.49)

Double glazed window to fore, central heating radiator, fitted wardrobes.

### **Bedroom 2**

8'2" x 7'11" (2.5 x 2.42)

Double glazed window to rear, central heating radiator, fitted wardrobes.

### **Bedroom 3**

9'9" x 6'0" (2.98 x 1.85)

Double glazed window to fore, central heating radiator, laminate floor covering.

### **Re-fitted Bathroom**

6'1" x 5'7" (1.87 x 1.72)

Fully tiled walls, panelled bath, overbath shower fitted with two shower heads, glazed shower screen, pedestal

wash hand basin, low flush w.c., central heating radiator, double glazed window, laminate floor covering.

## **OUTSIDE**

### **Side Garage**

Power and lighting.

### **Gardens**

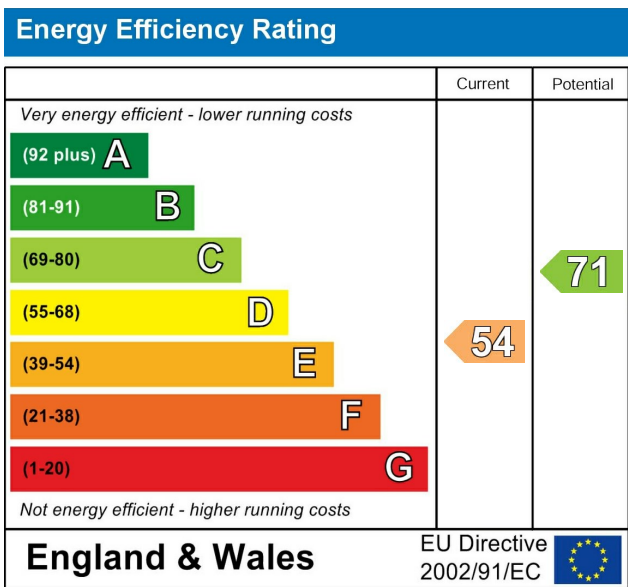
To the fore there is a gravel area and block-paved driveway providing 'off road' car parking.

The rear garden has a patio, lawn, screen fencing and garden shed.

## **ADDITIONAL INFORMATION**

Tenure - We understand that the property is Freehold, however we would advise all interested parties to have this information verified by a Legal Representative.

Council Tax - Band D - Solihull Metropolitan Borough Council.



**HOME TO SELL?**

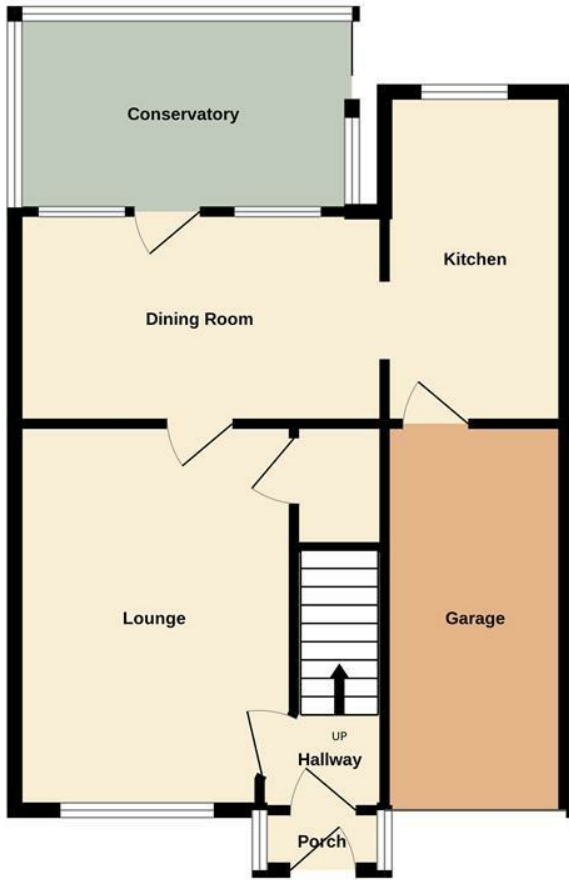
If you are selling your home, arrange a Free Valuation today. Call 0121 776 5744.

**FIND US ON:**

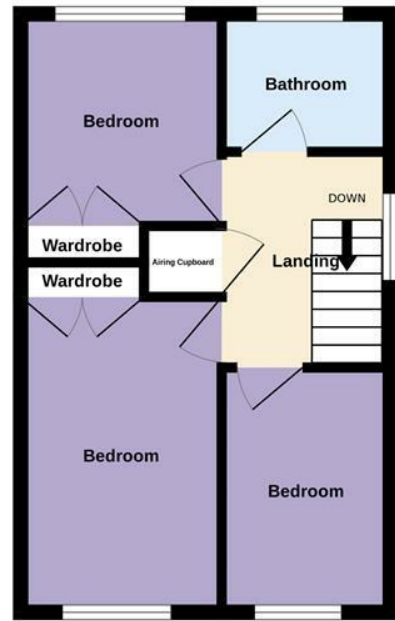


These particulars, whilst believed to be accurate are set out as a general outline only for guidance and do not constitute any part of an offer or contract. Intending purchasers should not rely on them as statements or representation of fact, but must satisfy themselves by inspection or otherwise as to their accuracy. We have not carried out a detailed survey nor tested the services, appliances and specific fittings. Room sizes should not be relied upon for carpets and furnishings. The measurements given are approximate. No person in this firms employment has the authority to make or give any representation or warranty in respect of the property.

Ground Floor



1st Floor



39 Whittleford Grove B36 9sl

Measurements are approximate. Not to scale. Illustrative purposes only.  
Made with Metropix ©2026