

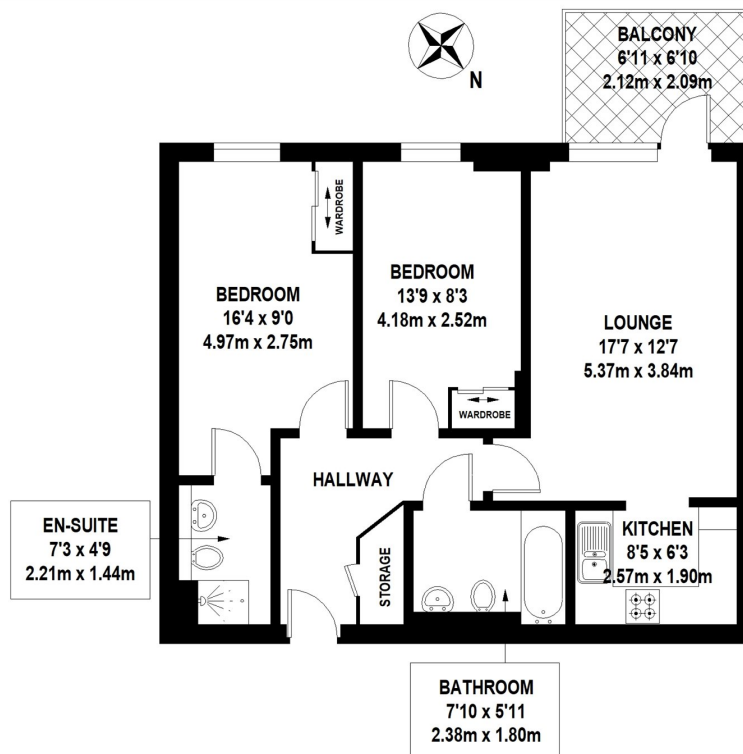


MERCURY HOUSE, E16

£350,000

This two bedroom, two bathroom property is fully furnished to a high interior specification. The property comprises approximately 695 sq ft to include a bright reception room with private balcony, open-plan kitchen fully fitted with quality appliances, granite work surfaces and ample storage, two well proportioned double bedrooms - one with en-suite shower room,

- 24h Concierge
- Service Charge: £3.500
- Parking Included
- Ground Rent: £300



TOTAL APPROX. FLOOR AREA 695 SQ.FT. (64.6 SQ.M)

Whilst every attempt has been made to ensure the accuracy of the floor plan contained here, measurements of door, windows, rooms and any other items are approximate and no responsibility is taken for any error, omission, or mis-statement. This plan is for illustrative purposes only and should be used as such by any prospective purchaser. The services, systems and appliances shown have not been tested and no guarantee as to their operability or efficiency can be given

© 2018 (ID475229)

LiFE RESIDENTIAL

36 Millharbour, London, E14

9JS

Sales: 020 3668 1033

Lettings: 020 3668 1030

Energy Rating: B. We aim to make our particulars both accurate and reliable. However they are not guaranteed; nor do they form part of an offer or contract. If you require clarification on any points then please contact us, especially if you're traveling some distance to view. Please note that appliances and heating systems have not been tested and therefore no warranties can be given as to their good working order.