



OAKFIELD



Beachy Head Road, Eastbourne, BN20 7QP

Price Guide £600,000



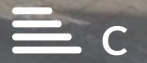
3



2



1



C

Beachy Head Road, Eastbourne, BN20 7QP

PRICE GUIDE: £600,000 - £625,000

Forming part of this exclusive mews style development ideally situated in the heart of meads village, this beautifully presented three-bedroom detached family home offers a wonderful balance of space, comfort and modern living, all set within one of Eastbourne's most sought-after residential areas.

The ground floor welcomes you with a bright and spacious living/dining room, ideal for both relaxing evenings and entertaining guests. A contemporary fitted kitchen provides a stylish and practical space, with direct access to the private rear garden, perfect for outdoor dining or family enjoyment. A convenient downstairs WC completes the ground floor accommodation.

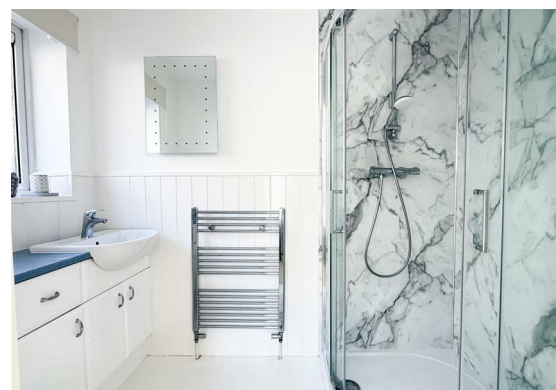
Upstairs, the property offers three well-proportioned bedrooms, with both the principal and second bedroom benefitting from fitted storage. The principal bedroom further enjoys a generously sized en-suite shower room. A modern family bathroom serves the remaining bedrooms.

Finished to a high standard throughout, the home also benefits from gas central heating and double glazing, ensuring comfort and efficiency all year round.

Externally, the property boasts a private rear garden, a single garage and an allocated parking space, adding further practicality to this appealing home.

Offered to the market chain free, this is an excellent opportunity for families or buyers seeking a move-in-ready home in a quiet yet well-connected location.





Living Room

18'4" x 17'5" (5.59m x 5.31m)

Kitchen

11'6" x 9'6" (3.51m x 2.90m)

Bedroom One

13'1" x 9'10" (4.00 x 3.00)

Bedroom Two

12'10" x 9'10" (3.91m x 3.00m)

Bedroom Three

9'6" x 7'3" (2.90m x 2.21m)

Bathroom

7'3" x 6'7" (2.21m x 2.01m)

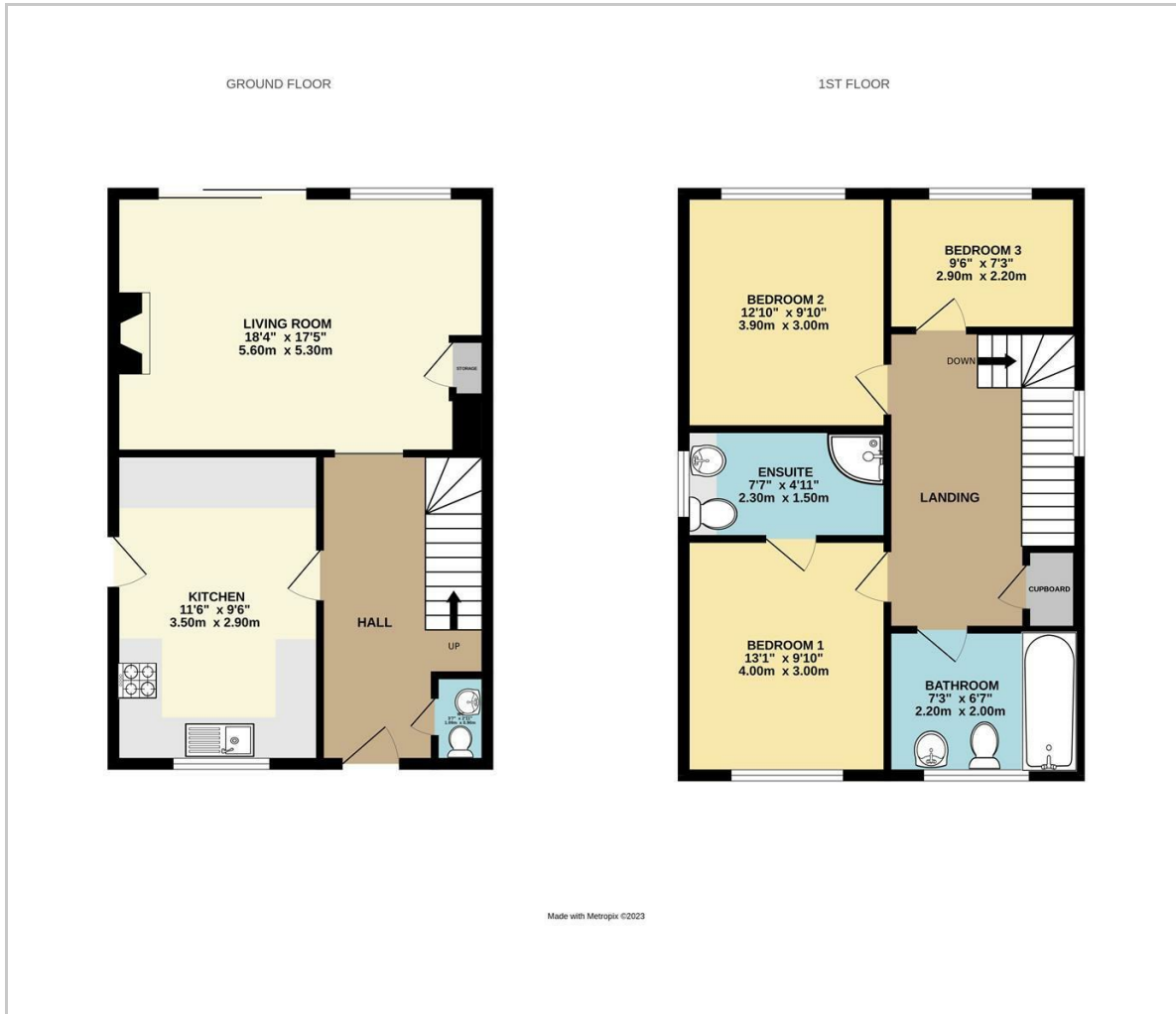
Ensuite

7'7" x 4'11" (2.31m x 1.50m)

Council Tax Band F - £3,833.96 Per Annum



Floor Plan

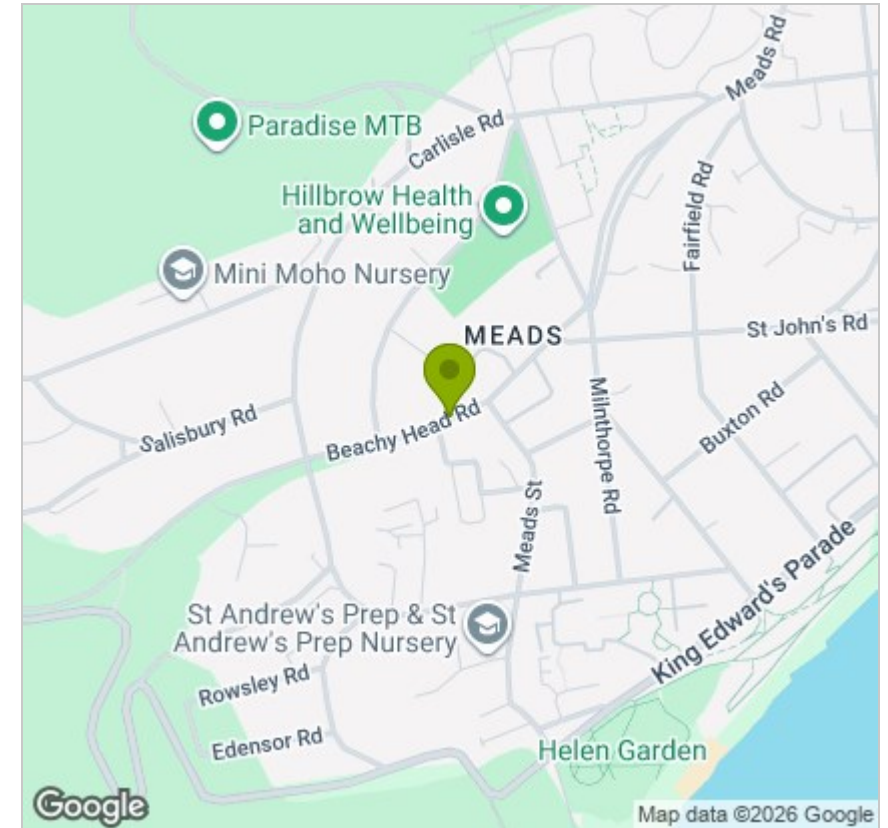


Viewing

Please contact us on 01323 723 500 if you wish to arrange a viewing appointment for this property or require further information.

These particulars, whilst believed to be accurate are set out as a general outline only for guidance and do not constitute any part of an offer or contract. Intending purchasers should not rely on them as statements of representation of fact, but must satisfy themselves by inspection or otherwise as to their accuracy. No person in this firm's employment has the authority to make or give any representation or warranty in respect of the property.

Area Map



Energy Efficiency Graph

