

# Your Logo

## Henley Avenue, Sheffield, S8 8JH

£340,000

3 1 2



A much loved three-bedroom semi-detached home situated in the highly sought-after area of Norton. This light and airy property offers spacious accommodation throughout, including an entrance hall with useful storage, two generous reception rooms and a fitted kitchen. To the first floor are three well-proportioned bedrooms and a modern family bathroom. The home also benefits from double glazing throughout.

Outside, there is a well-maintained rear garden, ideal for relaxing or entertaining, together with a garage and a driveway providing off-road parking for two cars.

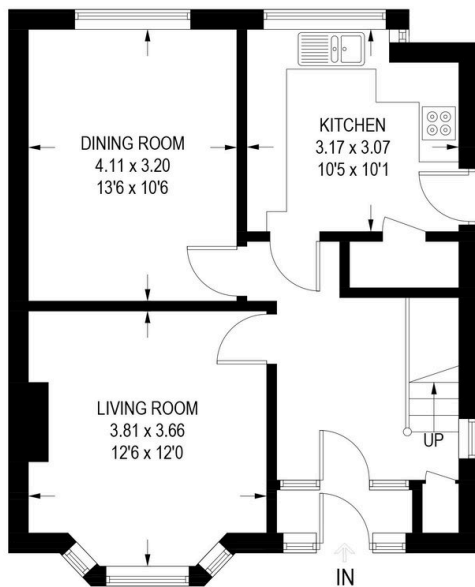
Norton is one of Sheffield's most desirable suburbs, popular with families and professionals alike. The area offers excellent local amenities, highly regarded schools, green spaces and convenient transport links to Sheffield city centre and beyond, making it a perfect location for those seeking a balance of comfort, community and convenience.

# Your Logo

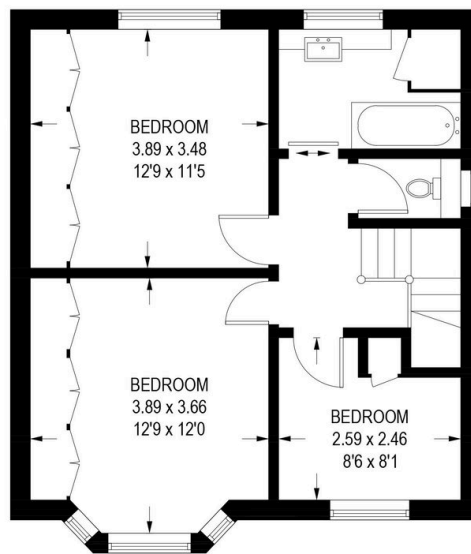
- Sought-after Norton location
- Two spacious reception rooms
- Bright and airy accommodation throughout
- Garage
- Beautifully maintained rear garden
- Much loved three-bedroom semi-detached home
- Modern family bathroom
- Fitted kitchen
- Useful hallway storage
- Driveway parking for two vehicles

## 9 HENLEY AVENUE

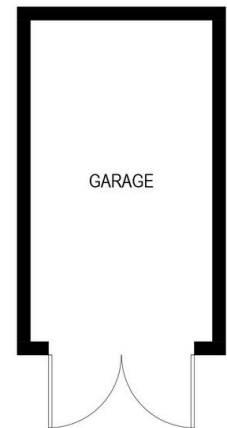
APPROXIMATE GROSS INTERNAL AREA = 97.2 Q M / 1046 SQ FT  
(EXCLUDING GARAGE)



**GROUND FLOOR**  
50.1 SQ M / 539 SQ FT



**FIRST FLOOR**  
47.1 SQ M / 507 SQ FT



(NOT SHOWN IN ACTUAL  
LOCATION / ORIENTATION)

Illustration is for identification purposes only,  
measurements are approximate, not to scale.