



**29 The Chestnuts, Cross Houses, Shrewsbury, SY5 6JH**

4 bedroom detached house — £450,000 Freehold

## 29 The Chestnuts, Cross Houses, Shrewsbury, SY5 6JH

Coopergreenpooks.co.uk

£450,000 Freehold — 4 bedroom detached house

sales@cgpooks.co.uk

**This beautifully presented and improved detached house offers thoughtfully designed and versatile accommodation over three floors, occupying a lovely position with a pleasant outlook over woodland to the rear, while benefitting from a private landscaped garden, driveway parking, and integral garage.**

### KEY FEATURES

- Good sized entrance hall with cloakroom, under stairs storage, and staircase to the spacious first floor landing
- Living room with feature fireplace, Charnwood stove, and bay window to front
- Open plan kitchen/dining room, complete with a range of well-fitted units, space for appliances, two sets of glazed doors to the rear garden, as well as access to the integral garage and utility area
- Three double bedrooms on the first floor and a large family bathroom with separate corner bath and shower. Bedroom one has built-in wardrobes and an en-suite shower room,.
- A further turning staircase leads to the second floor where there is another generous double bedroom and en-suite shower room. This bedroom also has well-designed built-in storage with dressing table, access to eaves storage, and velux windows allowing plenty of natural light
- Double glazed windows and gas fired central heating
- Private landscaped garden with National Trust land behind the property. The garden is laid to lawn with a paved sun terrace and secure gate to side
- Driveway to front providing ample parking for two cars, and access to the integral single garage
- A very quiet location within a beautiful setting, a short walk from the play area, village shop and garage, as well as being less than five miles from Shrewsbury town centre. There are also beautiful walks within the woodland that adjoins The Chestnuts

Cooper Green Pooks  
3 Barker Street  
Shrewsbury  
SY1 1QF

www.cgpooks.co.uk  
sales@cgpooks.co.uk  
01743 276666



# 29 The Chestnuts, Cross Houses, Shrewsbury, SY5 6JH

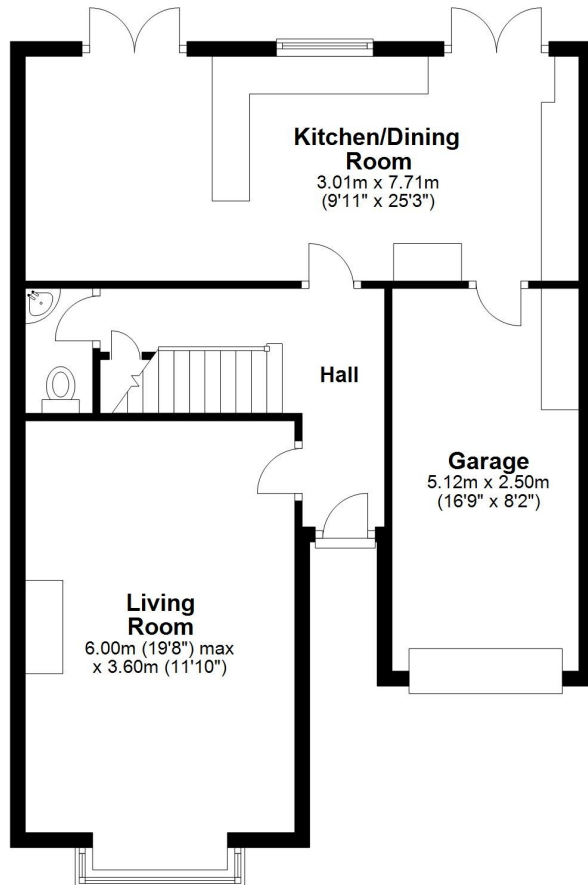
Coopergreenpooks.co.uk

£450,000 Freehold — 4 bedroom detached house

sales@cgpooks.co.uk

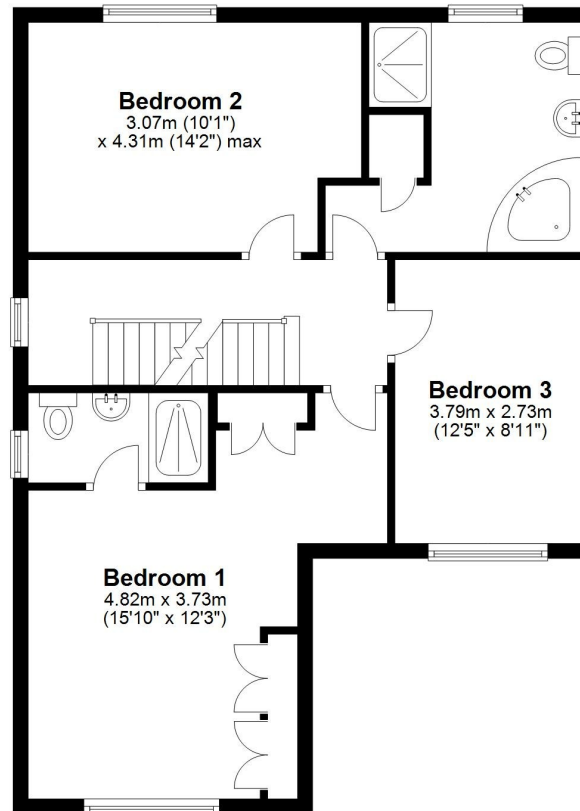
## Ground Floor

Approx. 65.3 sq. metres (702.8 sq. feet)



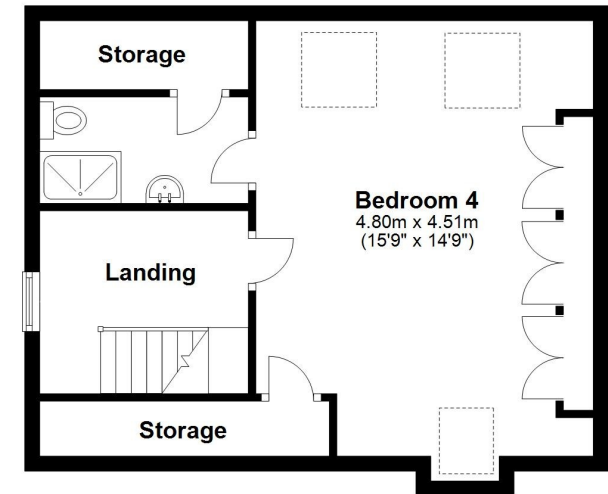
## First Floor

Approx. 64.0 sq. metres (688.6 sq. feet)



## Second Floor

Approx. 38.8 sq. metres (417.2 sq. feet)



Total area: approx. 168.0 sq. metres (1808.6 sq. feet)













# 29 The Chestnuts, Cross Houses, Shrewsbury, SY5 6JH

Coopergreenpooks.co.uk

£450,000 Freehold — 4 bedroom detached house

sales@cgpooks.co.uk



**IMPORTANT NOTICE:** Cooper Green Pooks for themselves and for the lessors or vendors of this property whose agents they are give notice that: 1 No appliances, services or service installations have been tested and no warranty as to suitability or serviceability is implied. Any prospective purchaser or lessee is advised to obtain verification from their surveyor or solicitor. 2. The particulars are set out as a general outline only for the guidance of the intended purchasers or lessees and do not constitute, nor constitute part of, an offer or contract. 3. All descriptions, reference to condition and necessary permissions for use and occupation and other details are given in good faith and are believed to be correct but any intending purchasers or lessees should not rely on them as statements or representation of fact but satisfy themselves by inspection or otherwise as to the correctness of each of them. 4. No person in the employment of Cooper Green Pooks has any authority to make or give any representation or warranty whatsoever in relation to this property. 5. All rentals and prices are quoted exclusive of Stamp Duty, legal and surveyors fees and any other associated purchasers or lessees costs. 6. Floor plans are indicative only and should not be relied on. 7. The plan showing the boundary of the property is indicative only and has not been checked against the legal title so should not be relied on. 8. All dimensions, floor areas and site areas are only approximate and should not be relied on. Dimensions are generally maximum room dimension.