



Cleveland Square, W2

£495,000

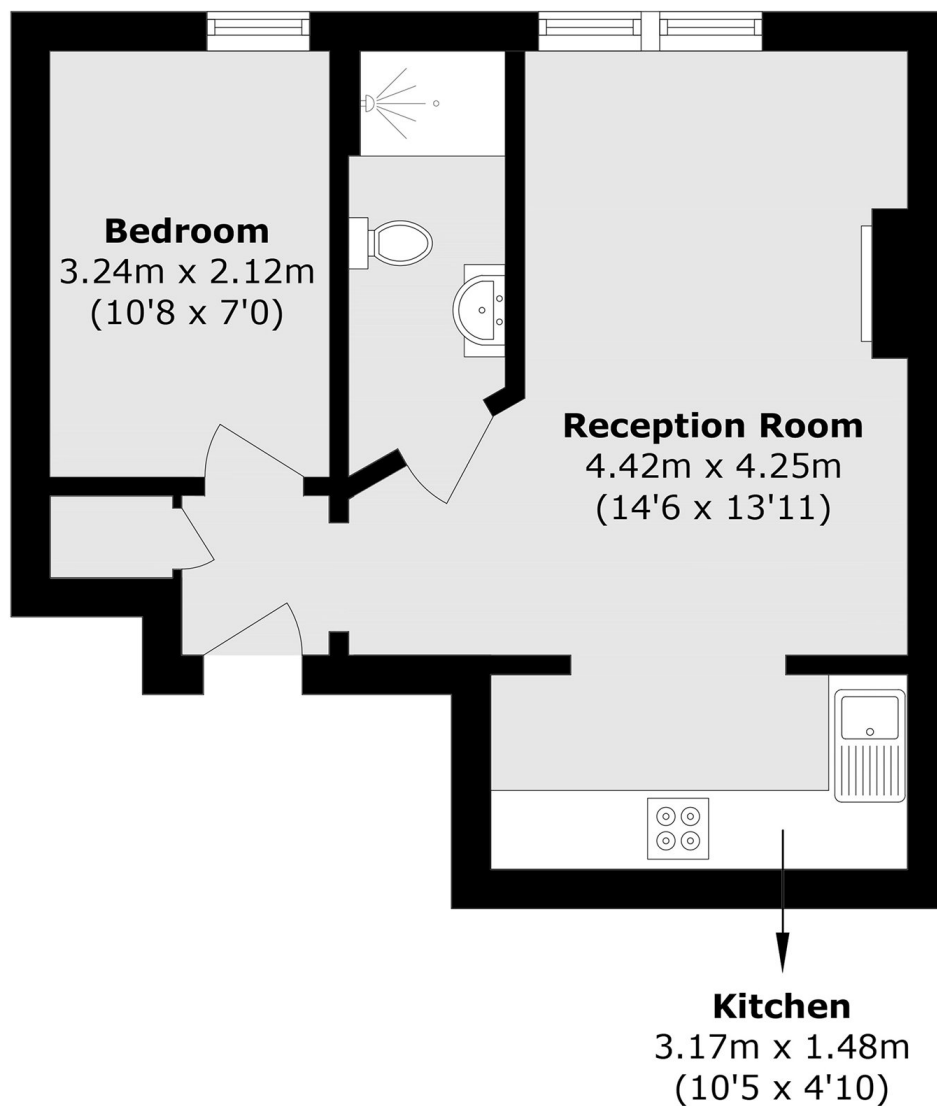
A top floor flat, in a white stucco fronted building, ideal for a first time buyer or a long term investment. The property is well-presented and has a separate kitchen, room to dine and access to manicured communal gardens.

Cleveland Square, W2, is ideally located between the convenient transport links in Paddington and the regeneration in Bayswater. There's plenty of restaurants and shops to choose from and the green spaces of Hyde Park are close by.

Features

- One Double Bedroom
- White Stucco Fronted
- Private Communal Gardens
- Separate Kitchen
- Share of Freehold
- Paddington

Cleveland Square, London, W2



Total area (approx.): 34.6 sq. m (372.4 sq. ft)