



ELR
ESTD 1840

16 Castledine Court Balby, Doncaster, DN4 8SE £875 Per Calendar Month

A well presented, two bedroom mid-terraced property on the Woodfield Plantation, Doncaster.
AVAILABLE NOW AND UNFURNISHED.

- Two bedroom mid-terraced property
- Kitchen/dining room with patio door access to the garden
- Tandem parking
- Enclosed rear garden
- Lounge
- Close proximity to schools, shops and host of amenities
- Bathroom with shower over bath
- AVAILABLE NOW
- UNFURNISHED
- COUNCIL TAX BAND B

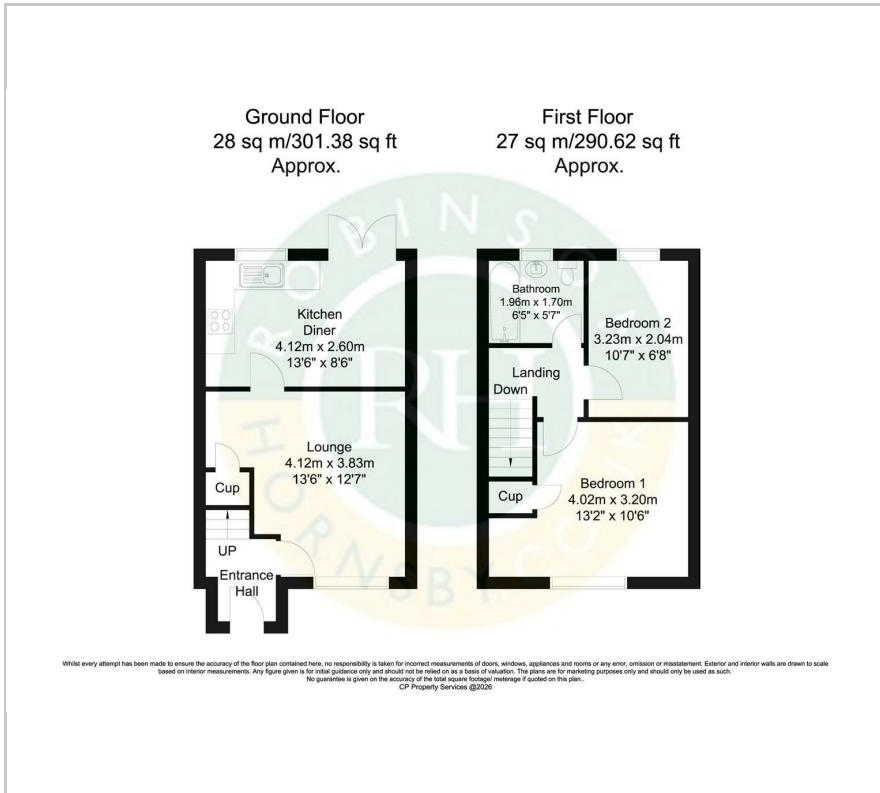
Viewing

Please contact our ELR Europa Link Office on 01142689900 if you wish to arrange a viewing appointment for this property or require further information.

ELR
ESTD 1840



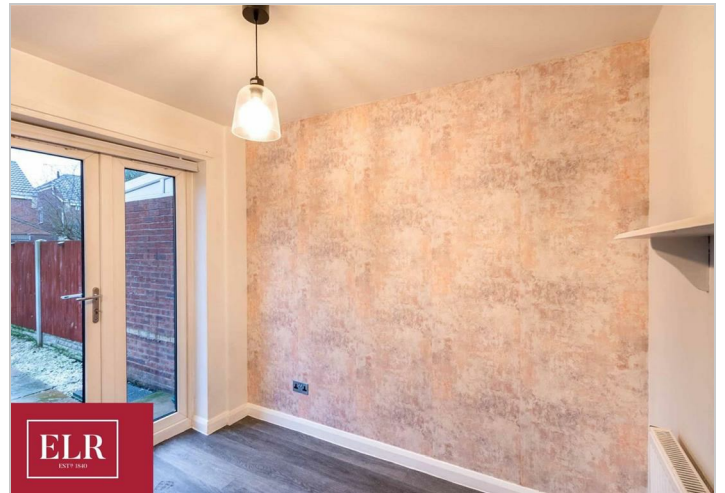
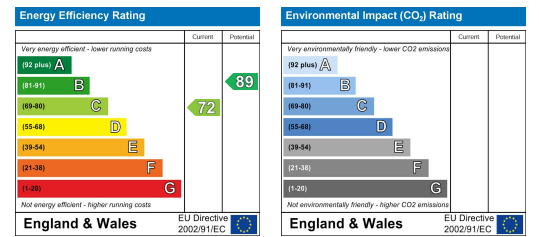
Floor Plan



Area Map



Energy Efficiency Graph



These particulars, whilst believed to be accurate are set out as a general outline only for guidance and do not constitute any part of an offer or contract. Intending purchasers should not rely on them as statements of representation of fact, but must satisfy themselves by inspection or otherwise as to their accuracy. No person in this firm's employment has the authority to make or give any representation or warranty in respect of the property.