



TANGO WOOD, SOUTHAMPTON ROAD, ALDERBURY, SALISBURY SP5 3AG

01722 238711

**BAXTERS**  
PROPERTY & LAND AGENTS



**TANGO WOOD, SOUTHAMPTON ROAD, ALDERBURY, SALISBURY SP5 3AG**  
**PRICE GUIDE: £495,000**

Tango Wood is a handsome Edwardian semi detached family home with immense potential for renovation, updating and extending (subject of course to obtaining the relevant consents). The property has the benefit of a lovely large plot Which includes a sweeping drive and a mature garden. The house is located within the hugely popular village of Alderbury which lies about 5 miles to the southeast of the cathedral city of Salisbury.

Available for immediate occupation, Tango Wood offers spacious well planned accommodation arranged over three floors with, on the ground floor, two generous reception rooms, a large kitchen and cloakroom. Off the first floor landing is an excellent main bedroom, second double bedroom, single bedroom, and a family bathroom. On the second floor you will find a large double bedroom and extensive eaves storage.

Many characterful features remain within the house including picture rails, moulded architraves, fitted cupboards and a glazed divide with double doors between the two reception rooms. The property is mainly double glazed and central heating is provided via a mains gas fired boiler to radiators.

To the front and side of the property is a generous drive with parking for several cars. There is a substantial outbuilding comprising of a deep carport and two adjoining workshops. There is a super rear garden with a summer house.

**LOCATION:** Alderbury is situated approximately 6 miles to the south east of the cathedral city of Salisbury, to the east of the River Avon and is near to the New Forest National Park which offers more than 140 miles of tracks and footpaths for walking and cycling. Local facilities include a village hall, a primary school, two shops (one of which is a post office), public house and tennis and football clubs. Salisbury offers a comprehensive range of shopping, recreational, cultural, educational and medical amenities including a theatre, cinema and arts centre, twice weekly market, a variety of private fitness centres, Five Rivers Health and Wellbeing Centre, tennis clubs, golf courses and Salisbury District Hospital (on the southern edge of the city). There is a regular bus service to Salisbury and Southampton with a bus stop nearby. Salisbury has a main line station serving London (Waterloo) (journey time approximately 90 minutes) and the West Country and there are good road links to the M27 (approx. 12 miles), Romsey (approx. 12.5miles), Southampton (approx. 19 miles) London via the M27/M3.

**DIRECTIONS:** From the cathedral city of Salisbury proceed along the A36 Southampton Road. Follow the road until reaching the entrance to the dual carriageway and turn right (signposted Alderbury) onto the Southampton Road. Continue through the village, passing the War Memorial on the left hand side and Tango Wood can be found on the left hand side clearly identified by the BAXTERS for sale board.



Tango Wood Alderbury Salisbury SP5 3AG

Approximate Gross Internal Area = 1384 sq ft - 129 sq m  
 Outbuilding Area = 269 sq ft - 25 sq m

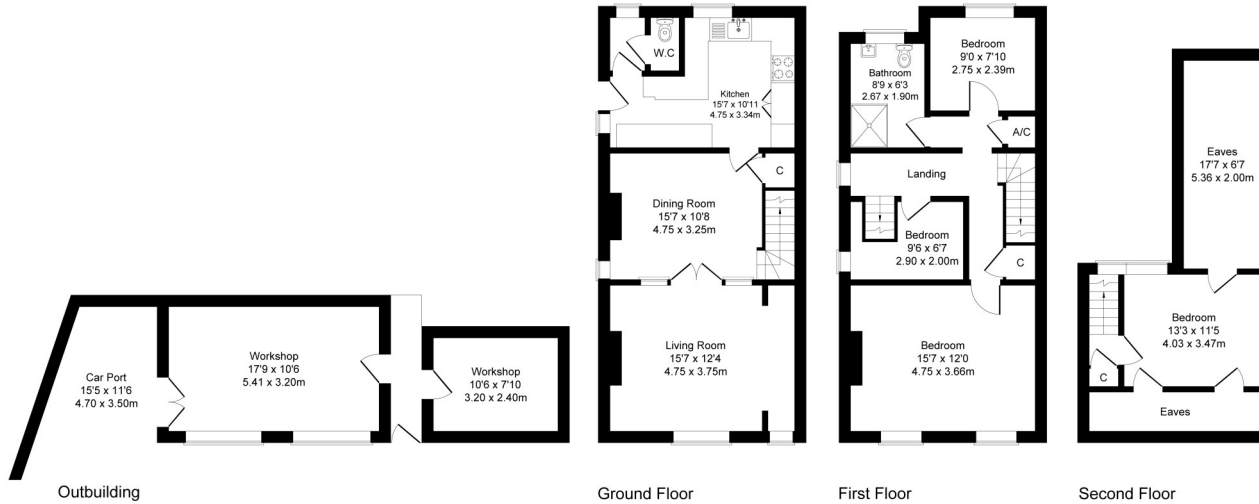


Illustration for identification purposes only, measurements are approximate, not to scale.



**TENURE AND SERVICES:** Tenure: Freehold. Local Authority: Wiltshire Council. Council Tax Band D : £2,444.44 for year 2026/2027. All mains services connected. Mains Drainage. Gas Central Heating . Fully double glazed.

**DECLARATION:** For clarification, we wish to inform prospective purchasers that we have prepared these particulars as a general guide. We have not carried out a detailed survey nor tested the services, appliances and specific fittings. Room sizes should not be relied upon for carpets and furnishings. The particulars do not constitute or form part of an offer or contract nor may they be regarded as representations. All interested parties must themselves verify their accuracy. Ref: 10837.

