



Exchange House, Crouch End, N8
Monthly Rental Of £1,100

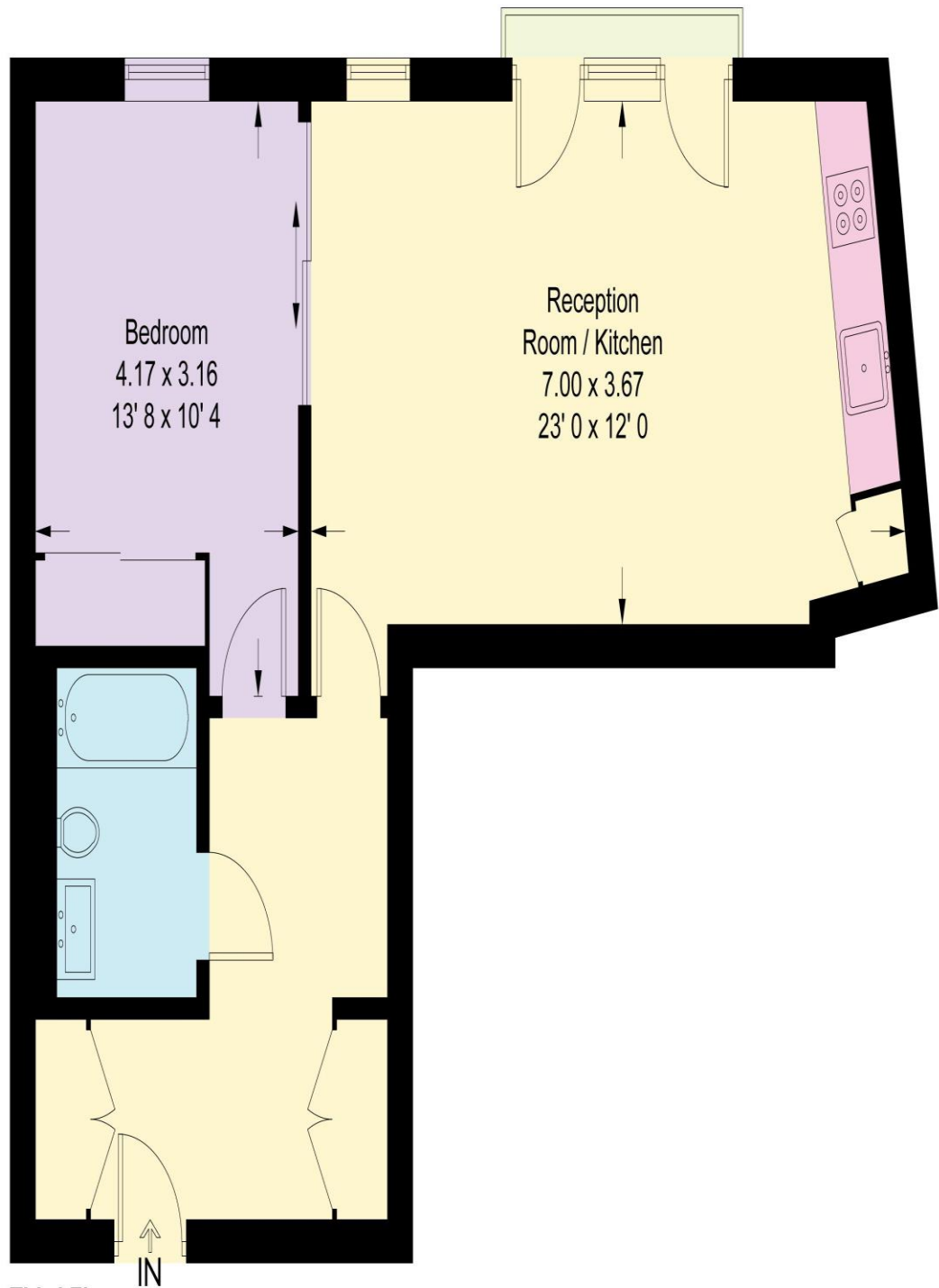
Litchfields are pleased to offer this very well presented one bedroom apartment in Exchange House, a landmark residential building, formerly a telephone exchange, in the heart of fashionable Crouch End. This spacious top floor flat (with lift) offers stylish living space comprising a generous entrance hall with built-in storage, open-plan reception-kitchen with Juliet balcony, double bed room with built-in storage and family bathroom. Further benefits include, gated entrance, secure allocated parking and communal garden. Enviably located with all the amenities of Crouch End Broadway with its array of shops, restaurants and transport links, literally on the doorstep. Available immediately – part furnished.

**Double bedroom with fitted wardrobes | Central Location | Open plan kitchen/diner/reception | Well Equipped Kitchen | Modern Bathroom
Entryphone system | Part furnished | Available Immediately**



Exchange House

Approximate Gross Internal Area = 582 sq ft / 54.1 sq m



Third Floor

This plan is not to scale and must be used as layout guidance only. All measurements and areas are approximate and should not be relied upon to provide accurate information. This plan must not be relied upon when making property valuations, design considerations or any other such relevant decisions. We accept no responsibility or liability (whether in contract, tort or otherwise) in relation to any loss whatsoever arising from or in connection with any use of this plan or the adequacy, accuracy or completeness of it or any information within it.