



Castles

ASKING PRICE

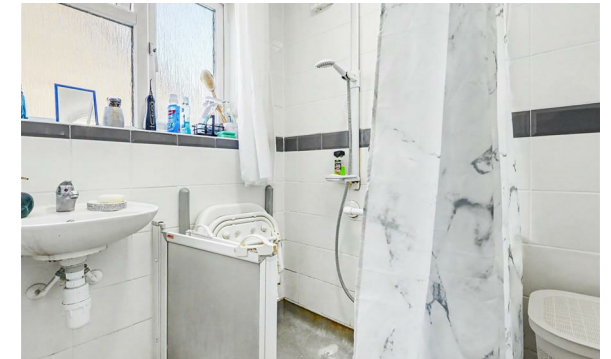
£515,000

Alma Road

Enfield, EN3 7RS Freehold

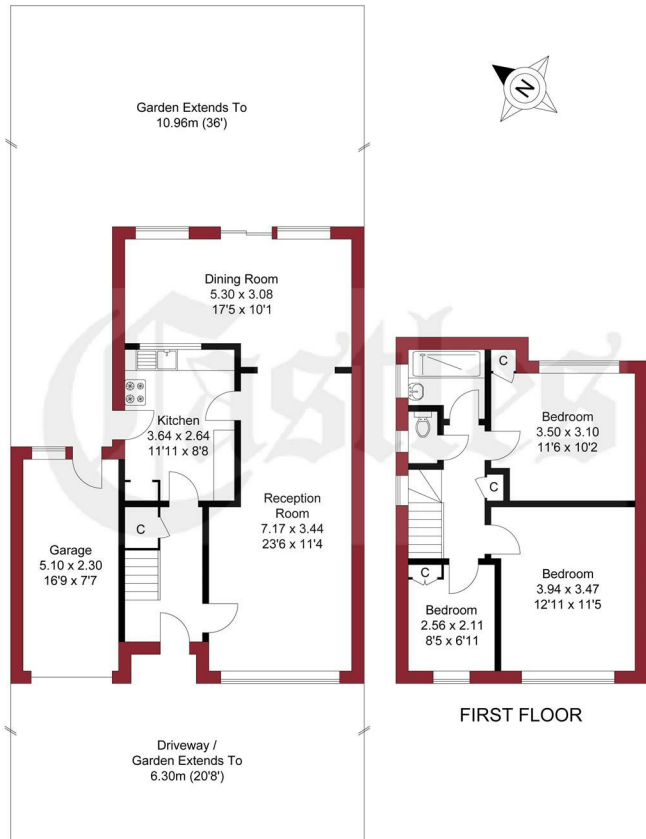
PROPERTY SUMMARY

An extended three bedroom semi-detached family house with garage to side, located on Alma Road within approx 0.3m of Brimsdown B R Station (serving London Liverpool Street) and close to local schools and Durant's Park. The property offers great potential and spacious family accommodation and viewing is highly recommended. Features include through lounge, first floor bathroom, 3 bedrooms, rear garden, and garage to side, front off street parking for 2/3 cars.





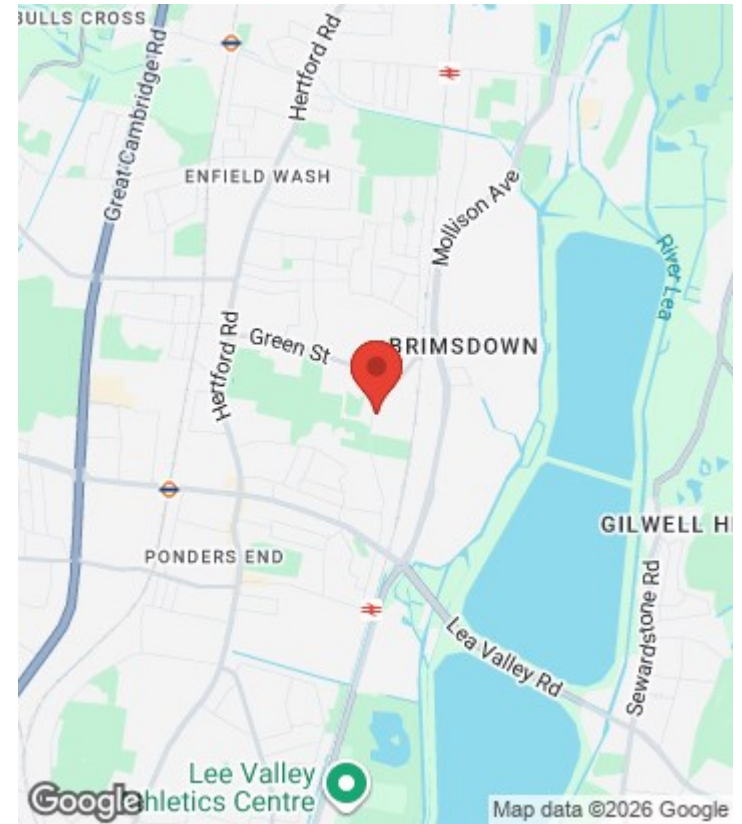
APPROXIMATE GROSS INTERNAL AREA
 95.99 sqm / 1033.22 sqft (Excluding Garage)
 107.72 sqm / 1159.48 sqft (Including Garage)



GROUND FLOOR

THIS PLAN IS FOR ILLUSTRATION ONLY AND MAY NOT BE REPRESENTATIVE OF THE PROPERTY

For a guide to the area please scan this code for more information



House

Freehold

Council: Enfield

Council Tax Band: D

Agents Note: Whilst every care has been taken to prepare these particulars, they are for guidance purposes only. All measurements are approximate and are for general guidance purposes only and whilst every care has been taken to ensure their accuracy, they should not be relied upon and potential buyers/tenants are advised to recheck the measurements



OFFICE ADDRESS

243 - 245 Hertford Road
 Enfield
 London
 EN3 5JJ

OFFICE DETAILS

0208 804 8000
 enfield@castles.london
 https://www.castles.london

