



Pantydwr, Llandeilo Road, Upper Brynamman,
Ammanford, SA18

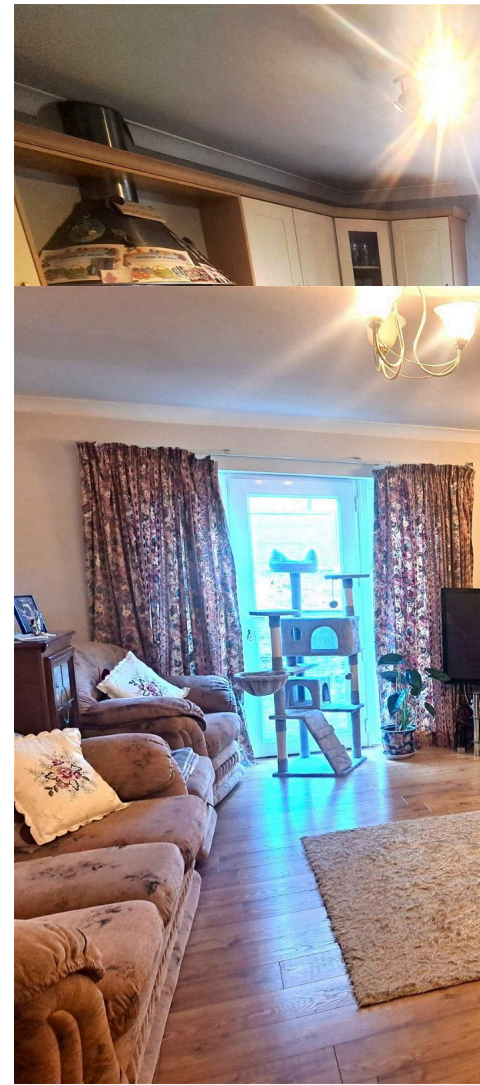
Offers In Region Of
£350,000

Calow Evans
Estate Agents

Pantydwr, Llandeilo Road, Upper Brynamman, Ammanford, SA18

Deceptively Spacious Detached Property.

An individually designed detached property offering versatile good sized accommodation situated on a private road off Llandeilo Road in the village of Brynamman. The property offers five bedroom accommodation with en-suite facilities, the former garage is currently used as a games room also potential for various uses (stpp). There is ample parking and a good sized garden in need of some work enjoying an open aspect to the rear.





Ent

Woo
first
with

Clo
2.01

Dou
hand
radia

Kit
4.27

Dou
rang
dish
boar
over
tiled



Utility Room:

3.35m x 1.6m (11'0" x 5'3")

Double glazed window and double glazed glass panel door to side, fitted with base units, single bowl sink unit and draining board, plumbing for washing machine, single panel radiator, door to former garage (waiting on building regs certificate).

Lounge:

5.79m x 3.78m (19'0" x 12'5")

Double glazed window and door to rear, wood flooring, feature fireplace with marble surround with coal effect electric fire, wall light connections, single panel radiator.

Sitting/Dining Room:

4.44m x 3.76m (14'7" x 12'4")

Double glazed patio doors to conservatory, wooden flooring, single panel radiator.



Conservatory:

3.2m x 3.12m (10'6" x 10'3")

Double glazed French doors, tiled floor, double panel radiator.

Bedroom One:

3.38m x 3.25m (11'1" x 10'8")

Double glazed window to front, fitted wardrobes, single panel radiator.

En-Suite:

2.34m x 1.47m (7'8" x 4'10")

Double glazed window to side, WC, wash hand basin in vanity unit, shower area with tiled splashback, walls tiled to ceiling, heated towel rail.



Bedroom Two:

3.61m x 3.25m (11'10" x 10'8")

Double glazed window to front, fitted wardrobes, double panel radiator.

Bedroom Three:

3.53m x 3.25m (11'7" x 10'8")

Double glazed window to front, fitted wardrobes, double panel radiator.

Bathroom:

2.34m x 1.47m (7'8" x 4'10")

Double glazed window to side, WC, wash hand basin in vanity unit, shower area with tiled splashback, walls tiled to ceiling, heated towel rail.





Former Garage/Games Room:

5.16m x 3.89m (16'11" x 11'0"/12'9")

Double glazed French doors to front, double glazed window to side, oil boiler providing domestic hot water and central heating, vented for tumble dryer, single panel radiator. Please note we are waiting for building regulations certificate.

First Floor Landing:

Waiting for building regulations certificate for the first floor. Velux window, double glazed window to side, double panel radiator.

Bedroom Four:

7.57m x 3.94m (24'10" narrowing to wardrobes 3'10" x 12'11")

Velux windows to both side elevations, provision set up for fitted wardrobes, double panel radiator.

Bedroom Five:

4.24m x 3.1m (13'11" x 10'2")

Double glazed window to rear, Velux window, provisions set up for fitted wardrobes, double panel radiator.

Shower Room:

Velux window, shower area with dual shower heads and tiled splashback, pedestal wash hand basin, WC, tiled floor, walls tiled to ceiling, heated towel rail.

Externally:

A tarmac driveway and lower parking area providing ample off road parking, side pedestrian access to a good sized rear garden, paved patio summer house and open aspect to the rear. Please note the rear garden is in need of work.

Servic

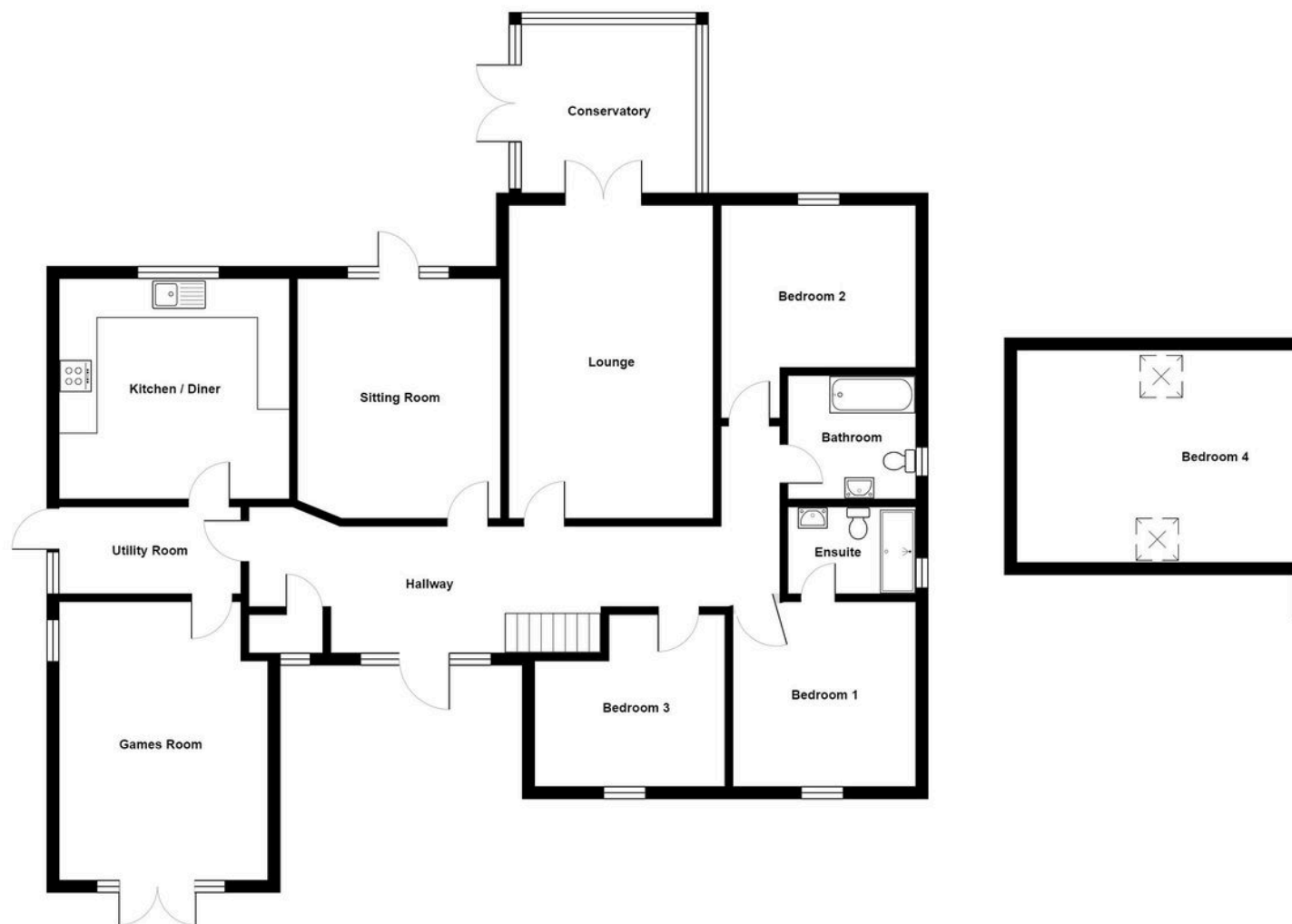
We are

Tenu

Freeho

Coun

E.



All measurements are approximate and for display purposes only

Address

38 College Street,
Ammanford, SA18 3AF

Office Contact

01269 543 128