



**Branksea Street, Fulham, SW6**

3 Bedrooms

**£3,250 per month**



LONDON ESTATES



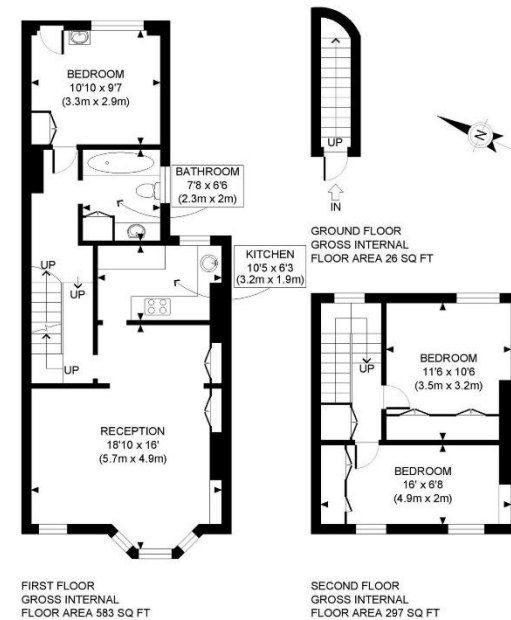
SPLIT LEVEL | THREE DOUBLE BEDROOMS | SEPARATE KITCHEN | GREAT LOCATION | EXCELLENT LOCAL AMENITIES | QUIET TREE LINED STREET

Available Date: 23<sup>rd</sup> July 2026

EPC Rating: D | Council Tax: D - £3,250 per month



LONDON ESTATES



APPROX. GROSS INTERNAL FLOOR AREA: 906 SQ FT/ 84 SQM

**PROPERTY PHOTO PLANS**.CO.UK  
ONE STOP SHOP FOR PROPERTY MARKETING

This plan is for illustrative purposes only and should be used as such by any prospective client. Whilst every attempt has been made to ensure the accuracy of the Floor Plan contained here, measurements of the doors, windows, rooms and any other items are approximate and no responsibility is taken for any errors, omissions, or misstatement. The services, systems and appliances shown have not been tested and no guarantee as to the operability or efficiency can be given.