



**RE/MAX**  
Elite



**136 Long Nuke Road, Birmingham, B31 1DY**  
**£250,000**

Four bedroom terraced house located in a popular residential area in close proximity to local schools, amenities and transport links.

The property offers spacious living accommodation comprising of a living room and an additional reception room, fitted kitchen with dining area, four well-proportioned bedrooms, family bathroom and downstairs shower room.

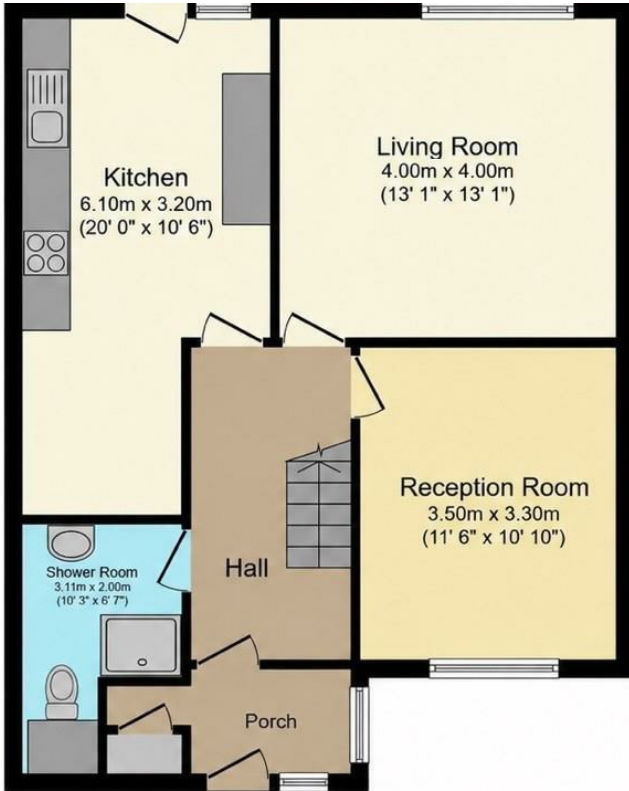
The property also benefits from having a driveway, a low maintenance rear garden and a new boiler was installed four years ago.

The property is offered with no onward chain.

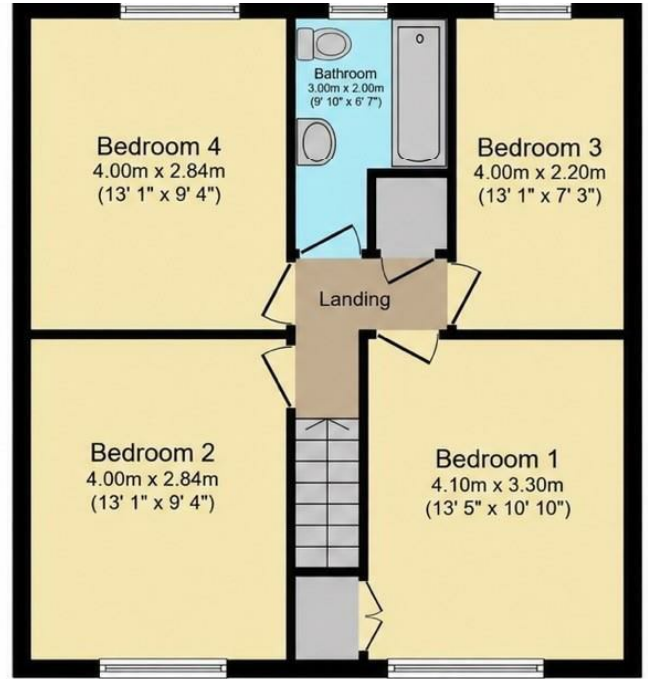
Please call or email to book in a viewing!



## Floor Plan



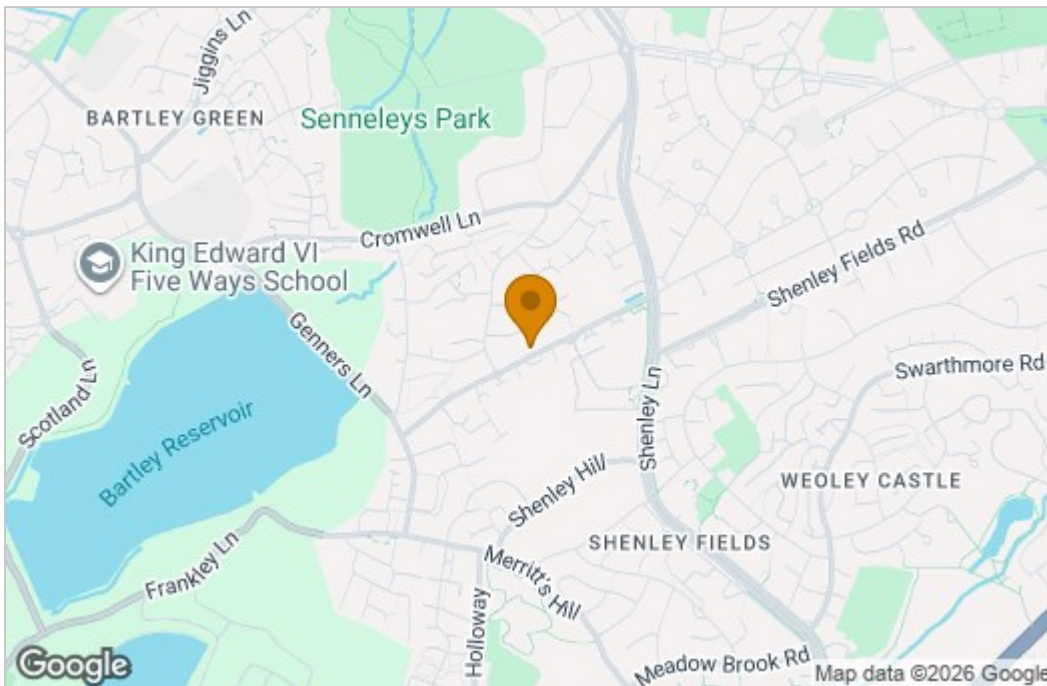
**Ground Floor**



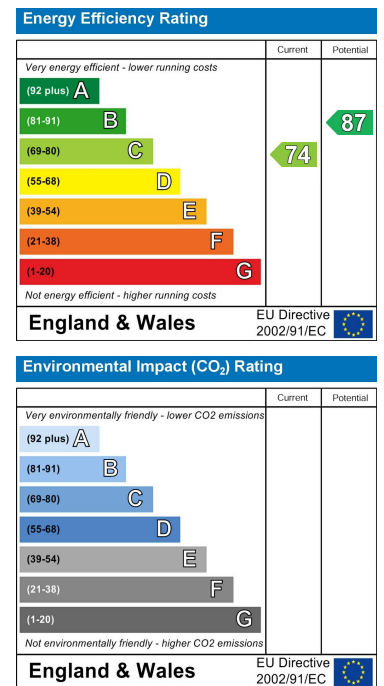
**First Floor**

Total floor area 124.2 sq.m. (1,337 sq.ft.) approx

## Area Map



## Energy Efficiency Graph



These particulars, whilst believed to be accurate are set out as a general outline only for guidance and do not constitute any part of an offer or contract. Intending purchasers should not rely on them as statements of representation of fact, but must satisfy themselves by inspection or otherwise as to their accuracy. No person in this firm's employment has the authority to make or give any representation or warranty in respect of the property.