

FREEHOLD



House - Semi-Detached

STUDLEY ROAD, DAGENHAM, RM9 6BE

Asking Price

£425,000

FEATURES

- ****CHAIN FREE****
- Three bedrooms
- Kitchen/Diner
- uPVC Double Glazing
- Extended Family Home
- Lounge
- Gas Central Heating
- ***OFF STREET PARKING***



STEPS

Estate Agents

3 Bedroom House - Semi-Detached located in Dagenham

Steps have great pleasure in offering for sale this CHAIN FREE extended three bedroom SEMI DETACHED family home. To the ground floor the property consists of a lounge, kitchen/diner and bathroom with the three bedrooms to the first floor. The property has further benefits to include, gas central heating, double glazing, rear garden with side access and OFF STREET PARKING.

Entrance

Laminate effect wood flooring. Understairs storage cupboard. Staircase to first floor. Doors to

Lounge

13'7" x 11'8"

uPVC window to front. Radiator.

Kitchen/Diner

15'10" x 11'9" < 9'6"

Range of fitted wall and base units with roll top work surfaces. Stainless steel single drainer sink unit with mixer taps. Tiled splash backs. Spaces for washing machine, cooker and fridge freezer. Radiator. uPVC window to rear. Door to garden.

Bathroom

Panel enclosed bath with shower over. Pedestal wash hand basin. Tiled splash backs. Part tiled flooring. Wall mounted boiler. Door to WC with obscure glazed uPVC window to rear.

Landing

Access to loft. Doors to

Bedroom One

14'8" x 9'0"

uPVC window to front. Radiator. Built in storage cupboard.

Bedroom Two

10'9" x 9'1"

uPVC window to rear. Radiator.

Bedroom Three

8'5" x 7'6"

uPVC window to rear. Radiator.

Rear Garden

Mainly paved. Side pedestrian access.

Front Garden

Providing off street parking.

We routinely refer potential purchasers to Move with Us Ltd. It is your decision whether you choose to deal with Move with Us Ltd. In making that decision, you should know that we receive an annual payment benefits from Move with Us Ltd, equating to approximately £314.48 per referral.



DAGENHAM SALES | STEPS ESTATE AGENTS, 298 HEATHWAY, DAGENHAM, ESSEX, RM10 8LU

Call us on

020 8593 5933

dagenham@steps.me.uk

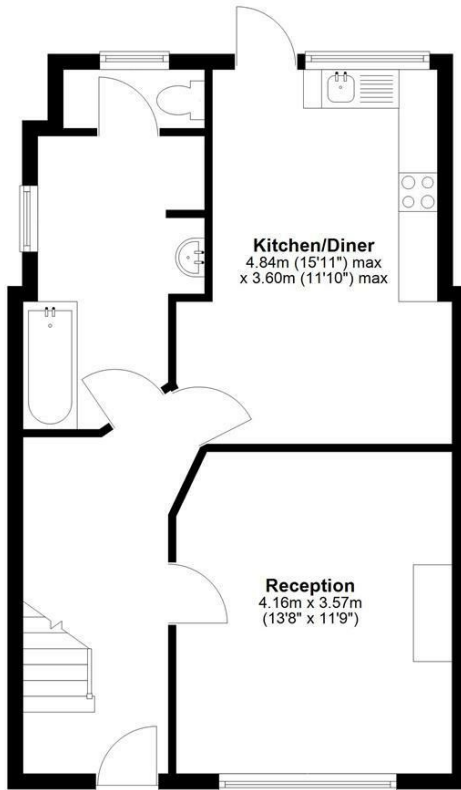
www.steps.me.uk

Council Tax Band

C

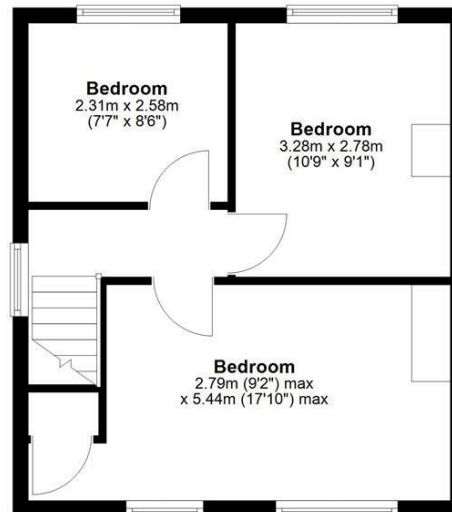
Ground Floor

Approx. 49.1 sq. metres (528.3 sq. feet)



First Floor

Approx. 33.7 sq. metres (362.5 sq. feet)



Total area: approx. 82.8 sq. metres (890.8 sq. feet)

Whilst every attempt has been made to ensure the accuracy of the floorplan contained here, measurements of doors, windows, rooms and any other items are approximate and no responsibility is taken for any error, omission or mis-statement. This plan is for illustrative purposes only and should be used as such by any prospective purchaser. The services, systems and appliances shown have not been tested and no guarantee as to their operability or efficiency can be given.
Plan produced using PlanUp.

Energy Efficiency Rating		Current	Potential
Very energy efficient - lower running costs			
(92 plus) A			82
(81-91) B			
(69-80) C			
(55-68) D		64	
(39-54) E			
(21-38) F			
(1-20) G			
Not energy efficient - higher running costs			
England & Wales		EU Directive 2002/91/EC	

Agents Note: Whilst every care has been taken to prepare these particulars, they are for guidance purposes only. All measurements are approximate and are for general guidance purposes only and whilst every care has been taken to ensure their accuracy, they should not be relied upon and potential buyers are advised to recheck the measurements.

