



## Prince Of Wales Terrace, London W8

Price £3,000 per month - Unfurnished





## Description

A spacious and well presented fourth floor apartment (with lift) situated moments from Hyde Park. The property consists of two double bedrooms, one bathroom, reception room and a fully fitted kitchen. The apartment benefits from underfloor heating and views of Hyde Park and it is situated just moments from Kensington tube station and its many local amenities.

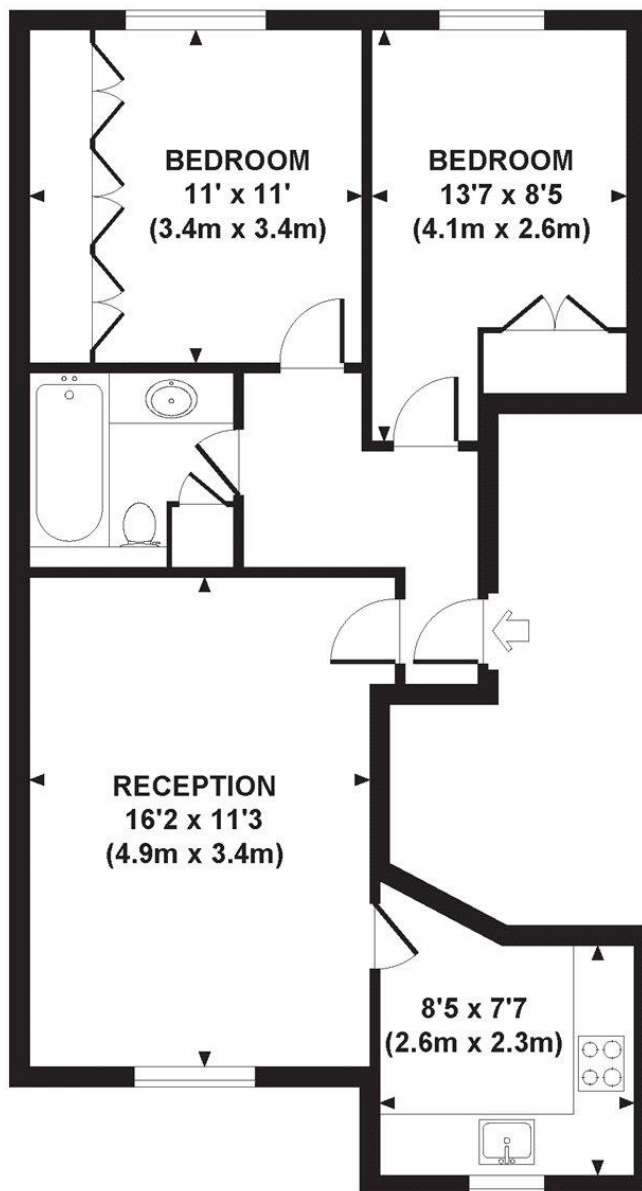
Council tax band: G. Rent is payable on a monthly basis, and you may be required to pay more than a month's rent in advance for tenancies with annual rents exceeding £100,000. You will be required to pay a 1 week holding deposit following a successful offer. Tenancies with annual rents up to £50,000 will require a 5 weeks' security deposit, while those exceeding this threshold will require a 6 weeks' deposit. Utility bills, council tax, telephone line and broadband are not included in the rent. As well as paying the rent, you may also be required to make some additional permitted payments. If your tenancy does not qualify as an APT, additional fees may apply. Please visit [jll.co.uk/fees](http://jll.co.uk/fees) for details of fees that may be payable when renting a property. To check broadband and mobile phone coverage please visit Ofcom here [ofcom.org.uk/phones-telecoms-and-internet/advice-for-consumers/advice/ofcom-checker](http://ofcom.org.uk/phones-telecoms-and-internet/advice-for-consumers/advice/ofcom-checker)

- Unfurnished flat
  - 2 Double bedrooms
  - 1 Bathroom
  - Reception room
  - Fully fitted kitchen
  - Fourth floor
  - Lift
  - Approx. 592 sq ft (55 sq m)
  - EPC: D
  - Council tax: Band G
-

# Floorplan

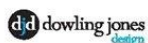
592 sq ft | 55 sq m

Approx. gross internal area  
592 Sq Ft. / 55 Sq M.



**FOURTH FLOOR**

Every attempt has been made to ensure the accuracy of this floorplan however, measurements are approximate and for illustration purposes only. Not to scale.  
Photography, floorplan and brochure design by Dowling Jones Design [www.dowlingjonesdesign.com](http://www.dowlingjonesdesign.com) 020 7386 1014 / 07793 974 209



Chelsea  
2 Cale Street,  
London SW3 3QU  
+4420 7399 5010  
[saleschelsea@jll.com](mailto:saleschelsea@jll.com)

*Urban living, your way.*

[jll.co.uk/residential](http://jll.co.uk/residential)

© 2019 Jones Lang LaSalle IP, Inc. All rights reserved. All information contained herein is from sources deemed reliable; however, no representation or warranty is made to the accuracy thereof.

