



Plough Road, SW11

£485,000

A large lateral one double bedroom apartment with South-Facing Balcony accessed from both the kitchen and the bedroom all with underfloor heating, an air source heat pump and two storage spaces. All within walking distance to Clapham Junction Station.

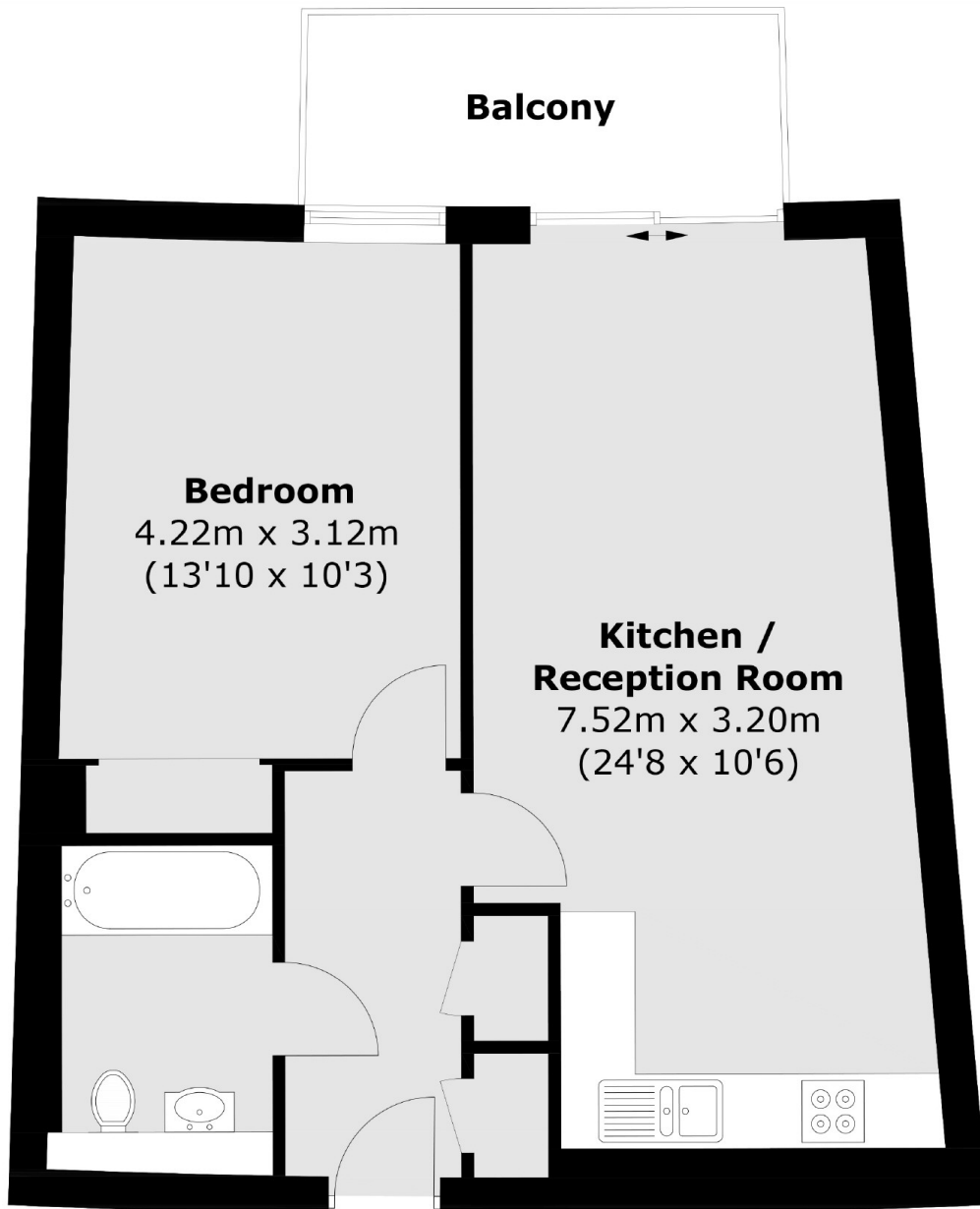
Developed by Thornsett, this exclusive collection of brand new penthouses reach new heights, elevate living standards and provide residents with exclusive, stunning views across the London horizon. Please note, the photographs shown are from another development built recently by the same developer.

Overlooking York Gardens, you'll always have immediate access to lush greenery. Just down the road is also Wandsworth Common with its immaculate 171 acres of lawns, boasting six tennis courts, lively playgrounds, and charming cafes.

Features

- Large Balcony - South Facing
- One Double Bedroom
- Daytime Concierge
- Underfloor Heating
- Air Source Heat Pump
- Walk To Clapham Junction

Plough Road,
Battersea, SW11



Ninth Floor

Total area (approx.): 51.8 sq. m (557.6 sq. ft)
Balcony: 5.9 sq. m (63.5 sq. ft)

Dexters

New Homes South London
12 The Broadway
London
SW19 1RF
Sales
020 8674 4555

Energy Rating: . We aim to make our particulars both accurate and reliable. However they are not guaranteed; nor do they form part of an offer or contract. If you require clarification on any points then please contact us, especially if you're traveling some distance to view. Please note that appliances and heating systems have not been tested and therefore no warranties can be given as to their good working order.

 **RICS** | Regulated
Estate Agent
and Letting Agent

dexters.co.uk