



Weston, Bath

£385,000

Beautifully Presented, Three Bedroom, End Terrace Home. EPC Grade D



106 Southlands

Bath

BA1 4EA

PRICE: £385,000

A beautifully presented three bedroom end terrace home in a popular location. Modernised and refurbished throughout in recent years by the current owner.

Hall, family bathroom suite with separate bath and shower, lounge/dining room, modern kitchen with sliding doors out onto the established gardens with patio and lawned areas. Upstairs there are three good sized bedrooms.

This contemporary home is in an ideal location within walking distance to all the amenities Weston Village has to offer, plus a choice of primary schools, a stones' throw to Bath's Royal United Hospital, and access to the M4 via Lansdown.

Three Bedroom End Terrace

Beautifully Presented Throughout

Modern Fully Fitted Kitchen

Established Gardens

Off Street Parking

Gas Central Heating

UPVC Double Glazing

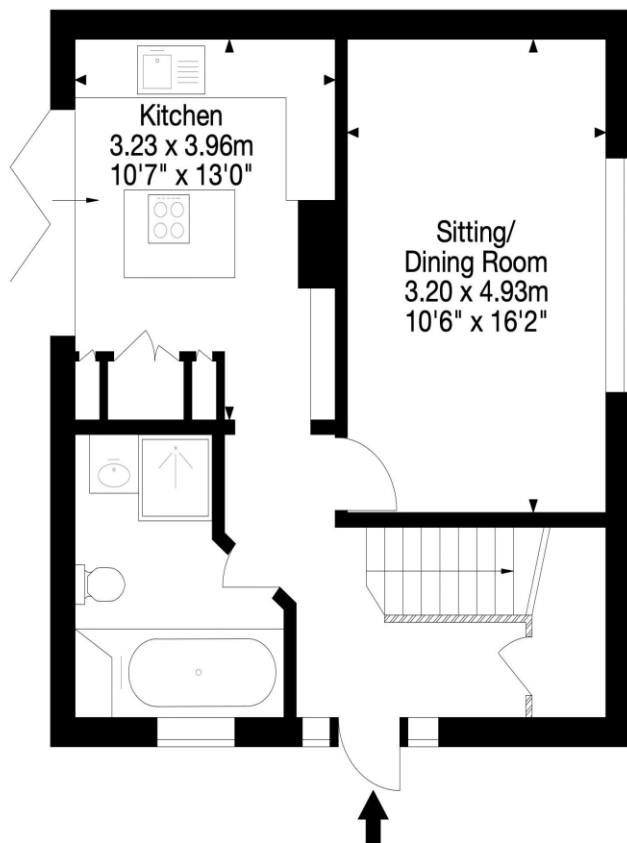
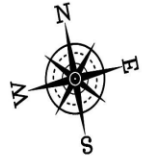
Close to Local Amenities

1000 Sq Ft (93 Sq Mt)

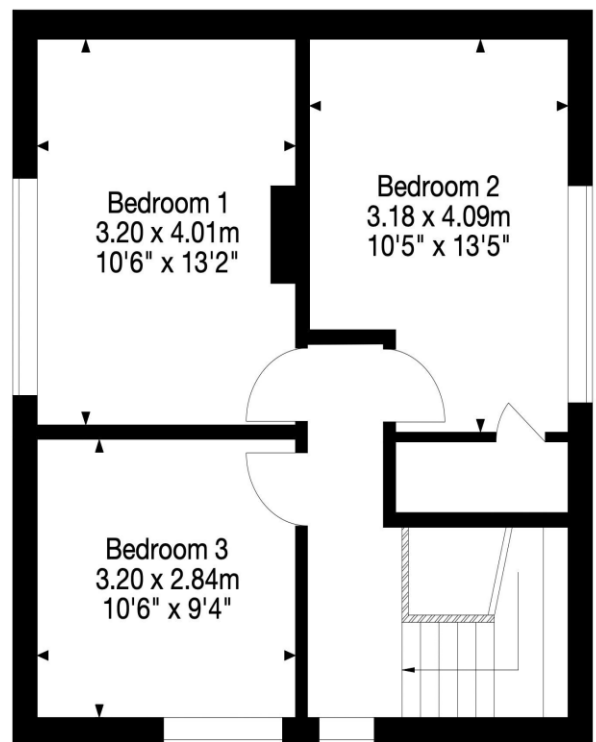
Council Tax Band A £1511



106 Southlands, Bath BA1 4EA
Gross Internal Area (Approx.)
93 sq m / 1,000 sq ft



Ground Floor



First Floor

Capture Property Marketing 2025. Drawn to RICS guidelines. Not drawn to scale.
Plan is for illustration purposes only. All features, door openings, and window locations are approximate.
All measurements and areas are approximate and should not be relied on as a statement of fact.

Capture.

Kit Johnson Residential
26-33 High St
Weston
Bath
BA1 4BX
01225 444447
sales@kitjohnson.co.uk
www.kitjohnson.co.uk