



## Ladbroke Gardens, W11

£700 Per week

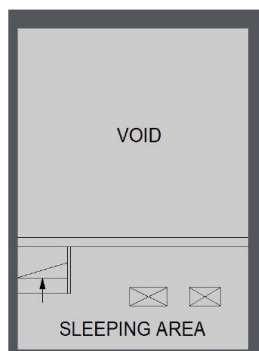
A spacious and stylish one double bedroom apartment with an open plan kitchen, spacious living room, a separate mezzanine sleeping area and access to communal gardens.

Close to Westbourne Grove and its many bars and boutiques such as. Also it is a short distance away from the shops and amenities of Notting Hill Gate.

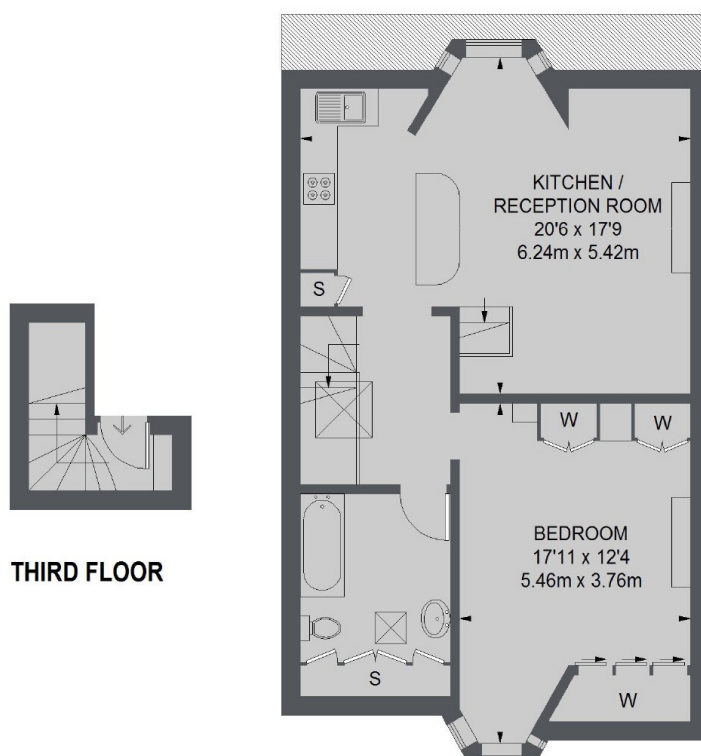
### Features

- One Double Bedroom
- Open Plan Kitchen
- Communal Gardens
- Victorian Conversion
- Built in Storage
- Westbourne Grove

# Ladbroke Gardens, London, W11



**MEZZANINE**



TOTAL APPROX. FLOOR AREA (EXCLUDING VOID)  
790 SQ. FT. (73.35 SQ. M.)