

95, Rebbeck Road, Bournemouth, BH7 6LP



Property overview

Guide Price £325,000

A well-presented three-bedroom semi-detached home in Rebbeck Road, Bournemouth.

Convenient for Pokesdown Station (0.3 miles), scenic walks of Kings Park (0.7 miles), popular bars, restaurants and amenities of Southbourne High Street (0.5 miles), as well as popular junior, primary and secondary schools.

The accommodation offers an entrance hallway with a built-in storage cupboard and an under-stairs WC, a lounge, and a kitchen/breakfast room on the ground floor.

Upstairs, there are three bedrooms (two doubles and a single), and a family bathroom.

Externally, there is a patio/garden, a log-cabin with power and a sheltered lean-to side storage path.

The property also benefits from UPVC double glazing and gas-fired central heating.



Accommodation

Front External:

Front garden section enclosed by fence and wall, path to side gate, front door to:

Entrance Hall: 10' 0" max into stairwell x 6' 0" (3.05m x 1.83m)

Stairs to first floor, thermostat control panel, built-in storage, doors to under-stairs storage (housing the electric consumer unit) and door to:

Under-Stairs WC: 6' 0" max x 2' 4" (1.83m x 0.71m)

Sloped ceiling with stairs, ladder-style towel radiator, wash hand basin with storage below, WC.

Lounge: 12' 4" max x 10' 1" max (3.76m x 3.07m)

Smoke alarm, picture rail, dual aspect window to front, radiator, tiled fireplace hearth.

Kitchen/Breakfast Room: 18' 8" max x 10' 10" max (5.69m x 3.30m)

Window to side aspect, picture rail, high-level cupboard housing gas-fired combination boiler, Range of eye and base level units, stainless steel sink/drainers; oven/grill with induction hob over, space for appliances (washing machine, dishwasher, American-style fridge/freezer), range of built-in shelves/storage, radiator, Sliding glass door to patio/garden.

First Floor Landing: 14' 1" x 8' 6" (4.29m x 2.59m)

Hatch to loft (fully boarded), smoke alarm, doors to accommodation.

Bedroom One: 10' 10" x 10' 10" (3.30m x 3.30m)

Smoke alarm, window to the rear aspect (overlooking East Cemetery).

Bedroom Two: 12' 6" max x 9' 11" max (3.81m x 3.02m)

Window to front aspect, radiator.

Bedroom Three: (Irregular Shape) 7' 8" max x 7' 0" max (2.34m x 2.13m)

Window to side aspect, radiator.

Bathroom: 7' 1" max x 6' 9" max (2.16m x 2.06m)

Obscured window to side aspect, wash hand basin with storage below, panelled bath with mixer taps, shower controls handheld attachment and rainfall shower head over, WC.

Rear External:

Enclosed by fence, laid to patio slabs and grass, ground-level flower beds, brick-built BBQ, side gate to lean to storage, French doors to:

Outbuilding: 11' 6" x 9' 6" (3.50m x 2.89m)

Timber construction, pitched roof, window, UPVC double glazing, independent consumer unit, and laid to laminate flooring.

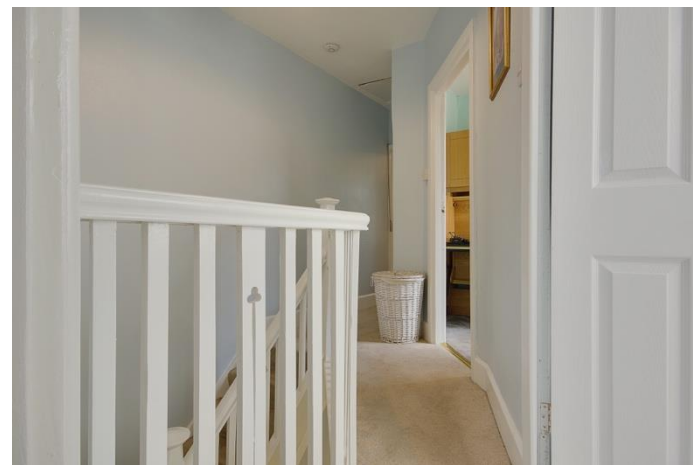
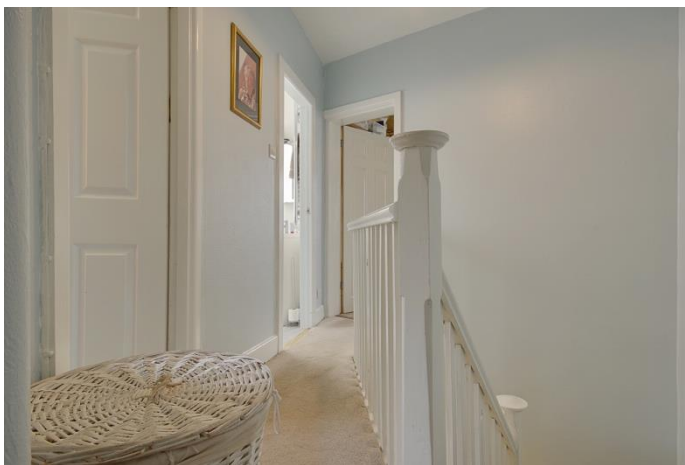
Lean-To Storage: 12' 10" max x 3' 4" max (3.91m x 1.02m)

Polycarbonate sloped roof, outside tap, providing storage, door to front.

Photography













Floor Plan

EPC



THIS FLOORPLAN IS PROVIDED WITHOUT WARRANTY OF ANY KIND. SIMOM RCO DISCLAIMS ANY WARRANTY INCLUDING, WITHOUT LIMITATION, SATISFACTORY QUALITY OR ACCURACY OF DIMENSIONS

MONEY LAUNDERING REGULATIONS 2003 intending purchasers will be asked to produce identification and proof of financial status when an offer is received. We would ask for your co-operation in order that there will be no delay in agreeing the sale. THE PROPERTY MISDESCRIPTIONS ACT 1991 The Agent has not tested any apparatus, equipment, fixtures and fittings or services and so cannot verify that they are in working order or fit for the purpose. A Buyer is advised to obtain verification from their Solicitor or Surveyor. References to the Tenure of a Property are based on information supplied by the Seller. The Agent has not had sight of the title documents. A Buyer is advised to obtain verification from their Solicitor. You are advised to check the availability of this property before travelling any distance to view. We have taken every precaution to ensure that these details are accurate and not misleading. If there is any point which is of particular importance to you, please contact us and we will provide any information you require. This is advisable, particularly if you intend to travel some distance to view the property. The mention of any appliances and services within these details does not imply that they are in full and efficient working order. These particulars are in draft form awaiting Vendors confirmation of their accuracy. These details must therefore be taken as a guide only and approved details should be requested from the agents.

Contact

Tel: 01202 805 806

Email: hello@simonandcoproperty.co.uk

Also find us on

