



## New Drum Street, E1

£4,250 Per calendar month

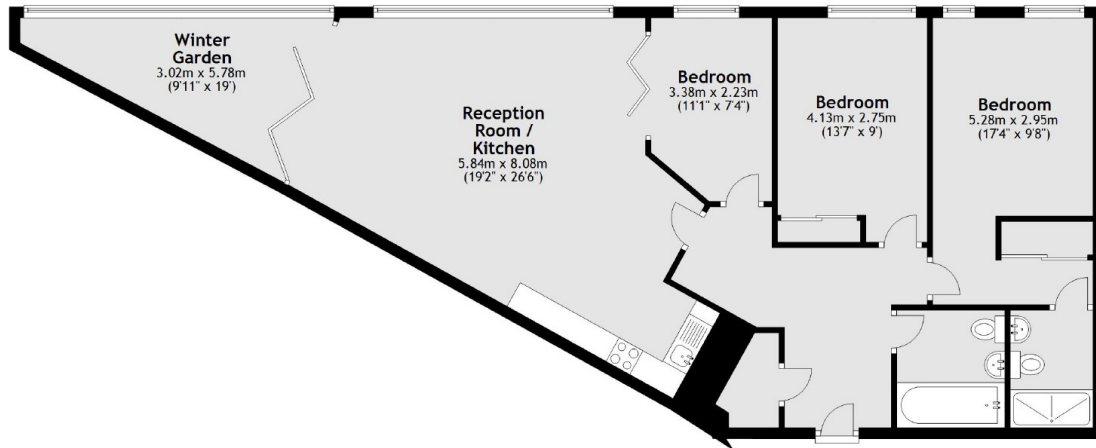
A stunning three bedroom apartment in Wiverton Tower available to rent. The property has an open plan living and kitchen area, three bedrooms, two bathrooms, a winter garden and is furnished to a high standard. Ideal for professional sharers looking for a property in the heart of the City.

Wiverton Tower is in a prime location just moment from The City of London financial district. The future tenants will be spoilt for choice when it comes to transport links, with Aldgate and Tower Hill Stations just a short walk from the property.

### Features

- Three Bedrooms
- Two Bathrooms
- Winter Garden
- Resident's Gym
- Concierge
- Aldgate

# New Drum Street, London, E1



Main area: Approx. 92.3 sq. metres (993.0 sq. feet)  
Plus winter garden, approx. 9.9 sq. metres (106.5 sq. feet)

**Dexters**

City  
5 Sandys Row  
London  
E1 7HW  
Lettings  
020 7392 9111

Energy Rating: B. We aim to make our particulars both accurate and reliable. However they are not guaranteed; nor do they form part of an offer or contract. If you require clarification on any points then please contact us, especially if you're traveling some distance to view. Please note that appliances and heating systems have not been tested and therefore no warranties can be given as to their good working order.

 **RICS** | Regulated  
Estate Agent  
and Letting Agent

[dexters.co.uk](http://dexters.co.uk)