



## Newburgh Road, W3

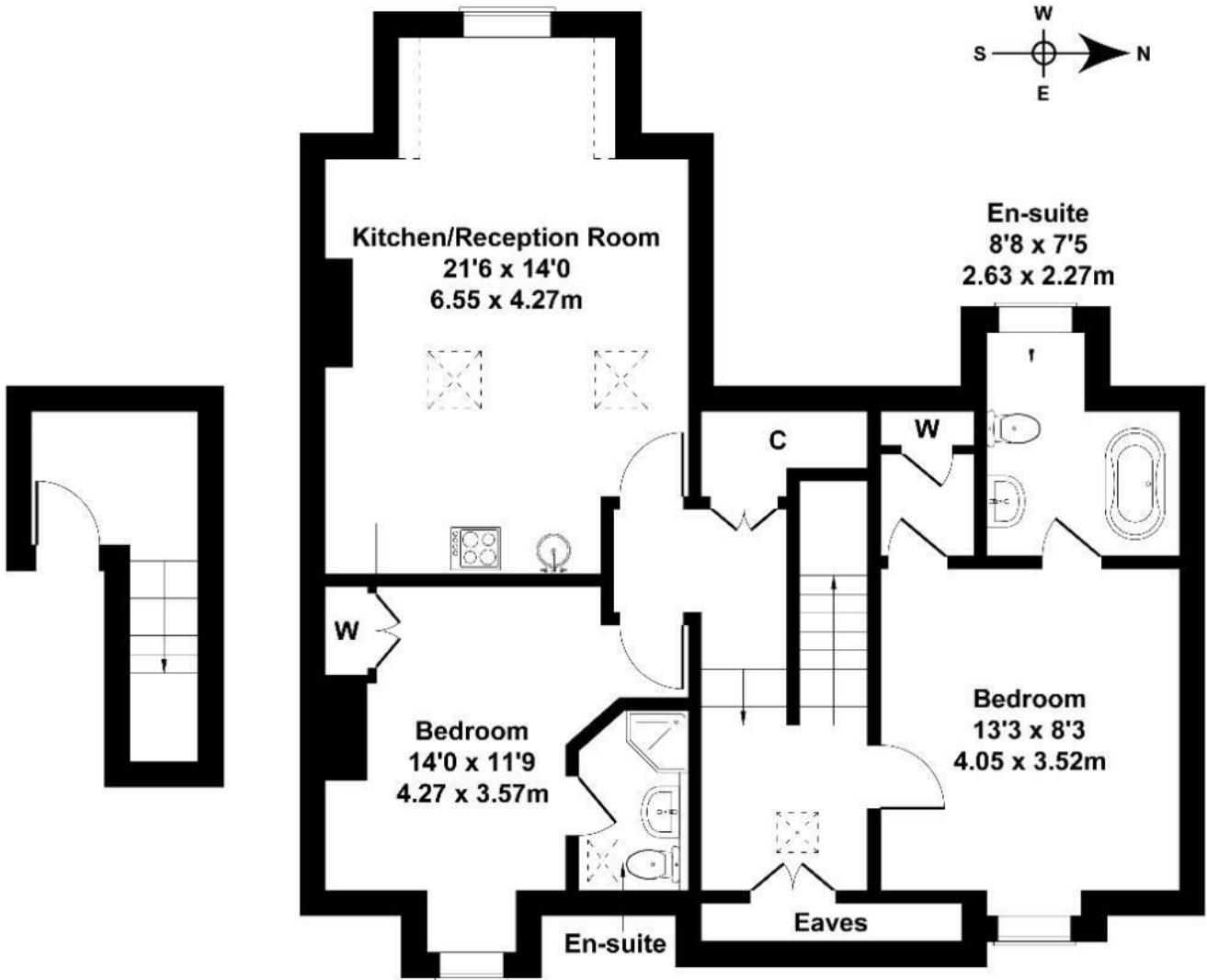
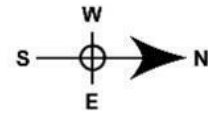
Long Let. This two-bedroom flat and two bathrooms benefit from a modern interior and a great location.

- Available Now
- Two Double Bedrooms
- Two Bathrooms (en-suite)
- Open Plan Kitchen Living Room
- Allocated Parking Space
- Close to transport and amenities

£2,100 Per Month

# Newburgh Road

Approximate Gross Internal Area  
861 sq ft - 80 sq m



FIRST FLOOR

SECOND FLOOR

Not to Scale. Produced by The Plan Portal 2024  
For Illustrative Purposes Only.

Energy Efficiency Rating		
	Current	Potential
<i>Very energy efficient - lower running costs</i>		
(92 plus) <b>A</b>		
(81-91) <b>B</b>		
(69-80) <b>C</b>		
(55-68) <b>D</b>		
(39-54) <b>E</b>		
(21-38) <b>F</b>		
(1-20) <b>G</b>		
<i>Not energy efficient - higher running costs</i>		
<b>England &amp; Wales</b>	EU Directive 2002/91/EC	