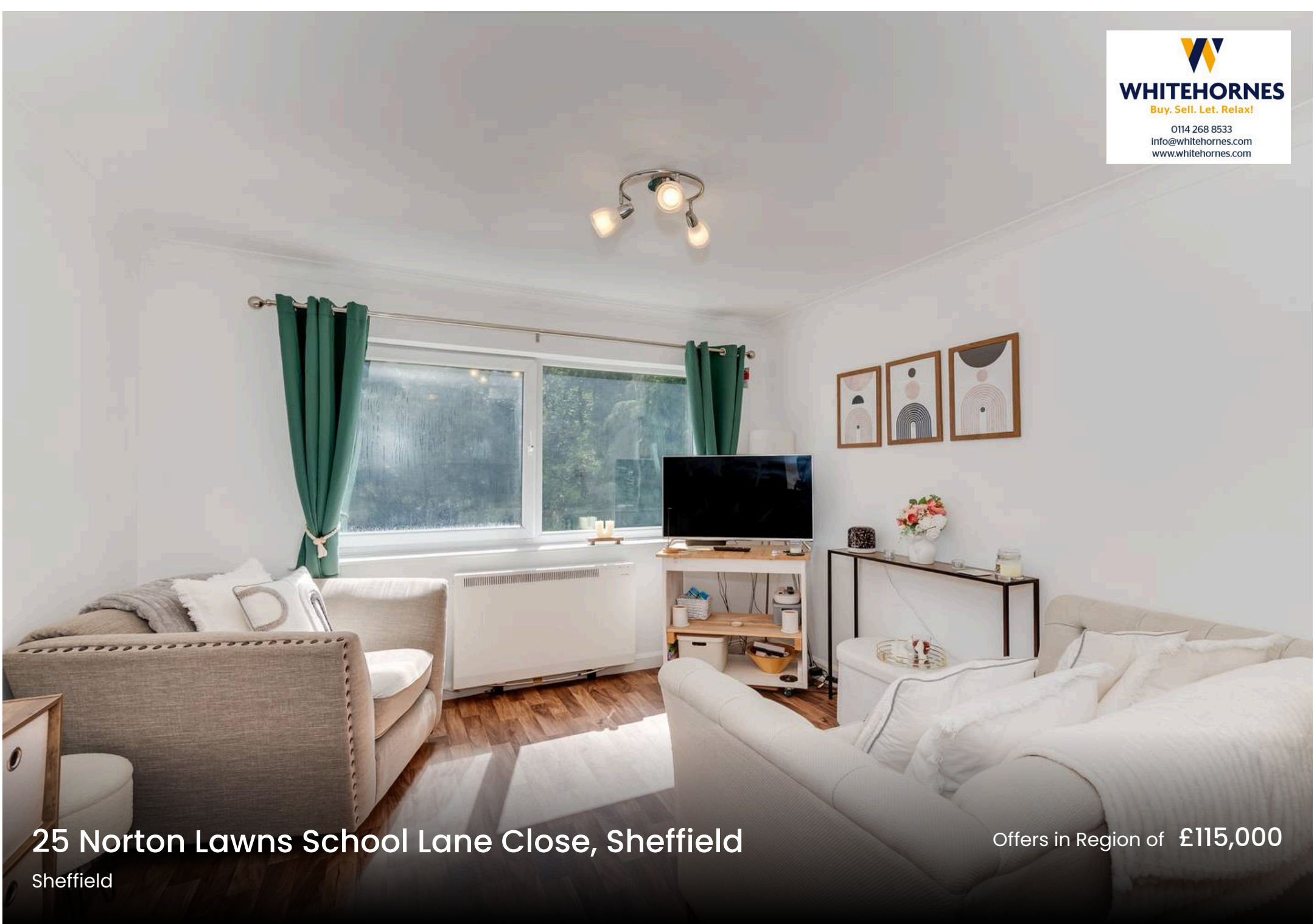




**WHITEHORNES**  
Buy. Sell. Let. Relax!  
0114 268 8533  
info@whitehorns.com  
www.whitehorns.com



**25 Norton Lawns School Lane Close, Sheffield**

Sheffield

Offers in Region of **£115,000**

# 25 Norton Lawns School Lane Close

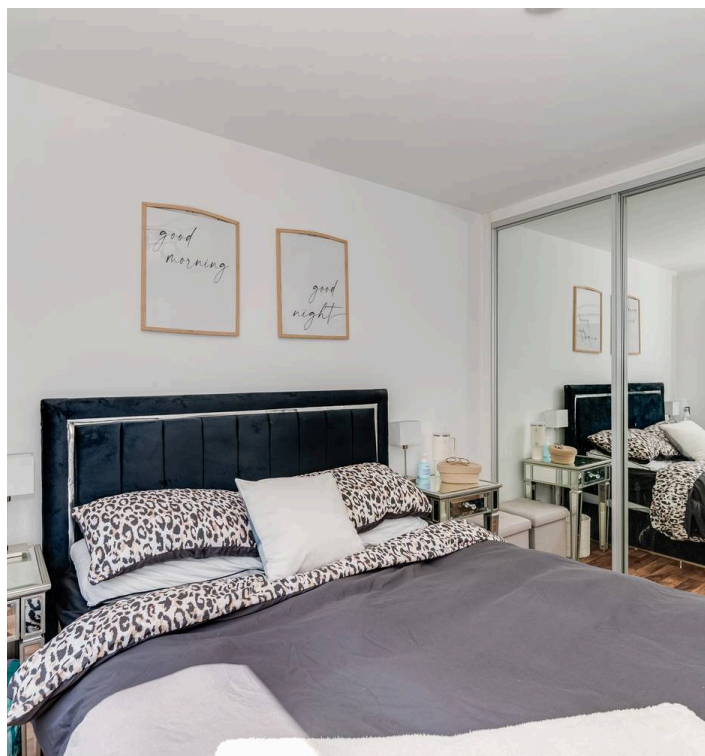
Sheffield

This fabulous one double bedroom first floor apartment offers an exceptional opportunity to acquire a stylish and versatile home, set back from the main road in this quiet, tucked away position, in the very heart of highly sought-after Norton. Finished to a high standard throughout by the current vendor, the property provides spacious and light accommodation totalling 407 square feet. The layout is thoughtfully designed, featuring a welcoming entrance hall, a generously sized double bedroom, a bright and airy living room, and a contemporary fitted kitchen. The bathroom is modern and well-appointed, complementing the overall finish of the apartment. Ideal for professional couples, first-time buyers, or those looking to downsize,

Council Tax band: A

Tenure: Leasehold

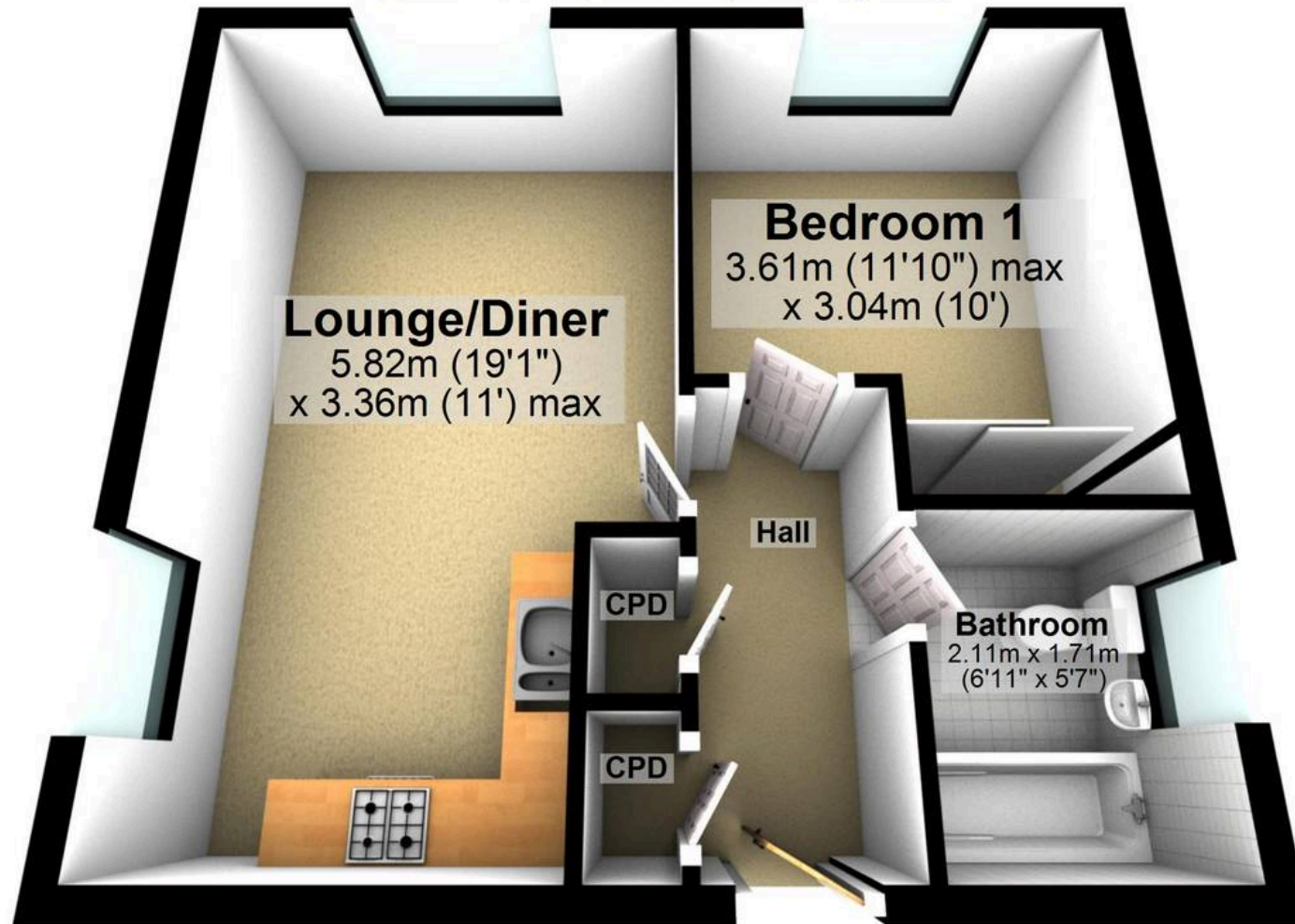
- FABULOUS ONE DOUBLE BEDROOM FIRST FLOOR APARTMENT
- FINISHED INTERNALLY TO HIGH STANDARD THROUGHOUT BY THE CURRENT VENDOR
- EXCELLENT LOCATION WITHIN THE VERY HEART OF ULTRA POPULAR NORTON
- EXCELLANT LOCAL AMENITIES INCLUDING ST JAMES PARK RETAIL PARK
- SPACIOUS LIGHT AND VERSATILE ACCOMMODATION TOTALLING 407 SQ FEET
- LRASEHOLD PROPERTY EPC Rating : E COUNCIL TAX BAND A
- PITCH PERFECT FOR THE PROFESSIONAL COUPLE FIRST TIME BUYER OR THOSE LOOKING TO DOWN SIZE IN EQUAL MEASURES





# First Floor

Approx. 37.8 sq. metres (407.4 sq. feet)



Total area: approx. 37.8 sq. metres (407.4 sq. feet)

All measurements are approximate  
Plan produced using PlanUp.