



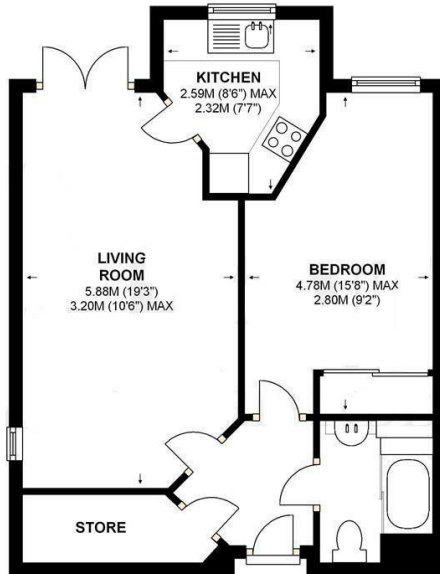
Matthews Lodge, Station Road, Addlestone, KT15 2FB



A ground floor one bedroom apartment in this modern over 60's development. The property consists of a good size living room with door out onto the communal grounds, kitchen with integral appliances including fridge, freezer, hob and waist height oven. The double bedroom has a built in wardrobe with sliding doors and the shower room is modern with a good size shower area. The development offers a residents lounge and laundry room as well as a guest suite and well tended communal gardens and parking area. All areas including the apartments have a 24 hour care line in them and there is an in house manager at the development from Monday to Friday. Offered with no onward Chain.



Leasehold



APPROXIMATE GROSS INTERNAL FLOOR AREA  
**44.7 SQ.M (481.7 SQ.FT)**

This floor plan has been produced by Sketch Design for Grants Independent.  
This plan is for illustrative purposes only and no responsibility can be given for any errors or omissions.  
Appliances and utilities eg. baths, cookers etc are visuals only, style and shape may differ.  
Copyright 2009, Sketch Design 07854 369275.



EPC Rating: 73 C







Grants Homes 155 Station Road, Addlestone, Surrey, KT15 2AT  
T: 01932 858885 E: [addlestone@grantshomes.co.uk](mailto:addlestone@grantshomes.co.uk)