



Lindsey Court, Green Lanes, London, N13
£379,995 Leasehold - Share of Freehold

Anthony Webb
ESTATE AGENTS

Lindsey Court, Green Lanes, London, N13

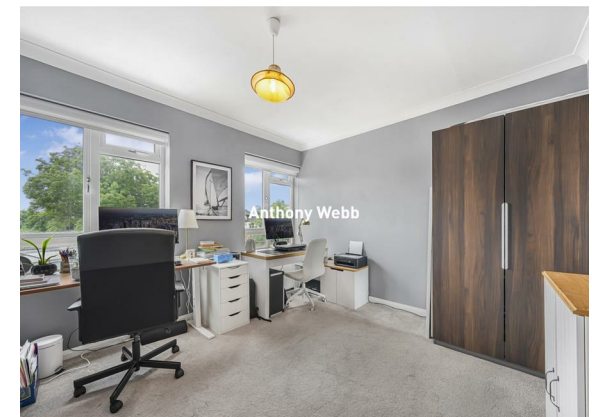
A beautifully presented and spacious two double bedroom apartment located on the first floor of this 1960s block consisting of six apartments. The property benefits from a Share of Freehold, a remaining lease of 978 years, no ground rent and an annual service charge of just £1300.

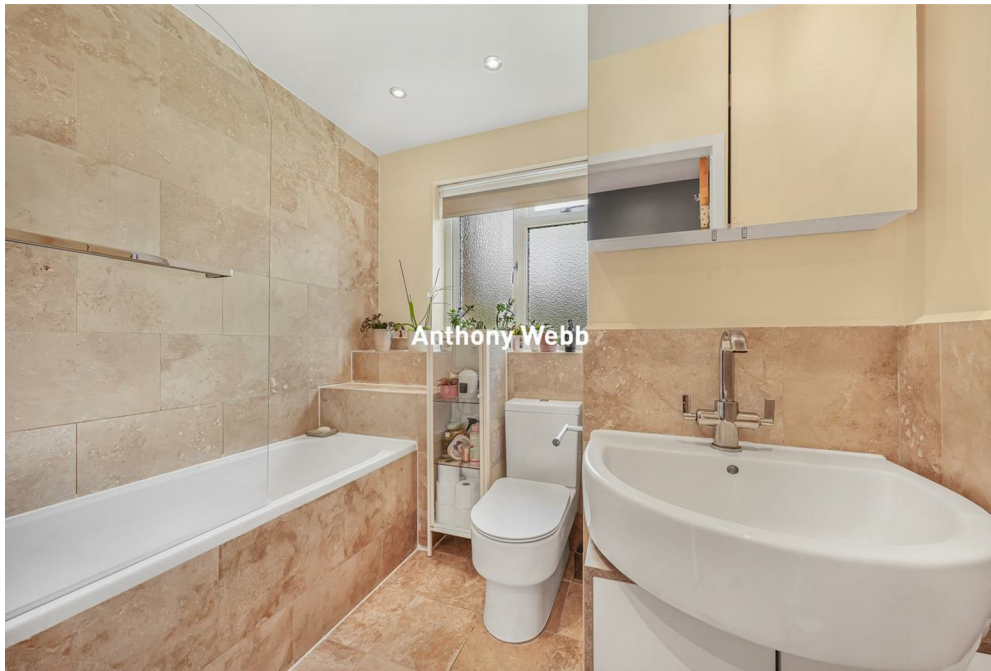
Lindsey Court is located on Green Lanes and is ideally placed between Palmers Green and Winchmore Hills shops, restaurants, bus routes and mainline stations into Moorgate. Southgate high road and underground station are also an easy bus ride away via the W6 route. The property is also in the catchment area for St Monica's Catholic primary school.

Secure communal entrance with entry phone system • Hallway with two large storage cupboards • Spacious living room with laminate floor • Modern fitted kitchen/diner • Modern bathroom with tiled floor • Two good size bedrooms • Double glazing • Gas central heating • Communal grounds/parking facilities •

Enfield council band C
Lease remaining -978 years
Service charges-£1300 p.a
Ground rent-£0

- Two double bedrooms
- First floor apartment
- Spacious living room
- Modern kitchen/diner
- Modern bathroom
- Double glazing/gas central heating
- Close to shops and transport facilities
- Secure communal entrance and parking facilities



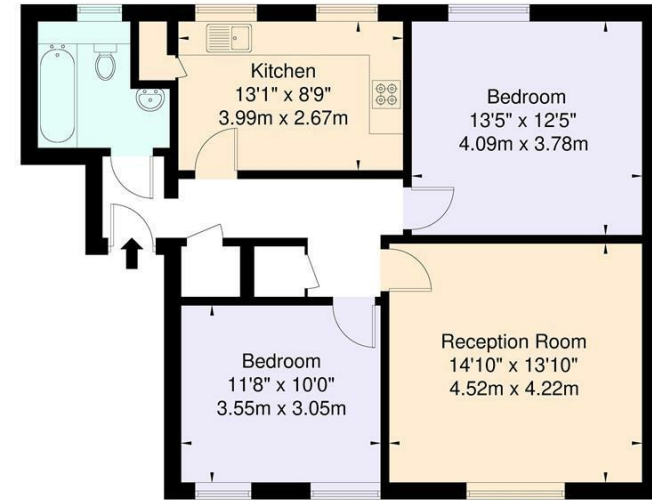
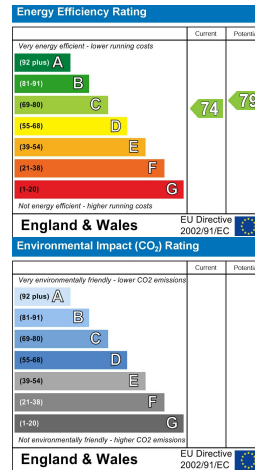


Lindsey Court, Green Lanes London N13 5SD

Lindsey Court, Green Lanes, N13 5SD
Approximate Gross Internal Area = 75.2 sq m / 809 sq ft



Tenure: Leasehold - Share of Freehold
Gross Internal Area: 809.00 sq ft



First Floor

For Illustration Purposes Only - Not To Scale

This floor plan should be used as a general outline for guidance only and does not constitute in whole or in part an offer or contract. Any intending purchaser or lessee should satisfy themselves by inspection, enquiries and full survey as to the correctness of each statement. Any areas, measurements or distances quoted are approximate and should not be used to value a property or be the basis of any sale or let.

Property particulars as supplied by Anthony Webb Estate Agents are set out as a general outline in accordance with the Property Misdescriptions Act (1991) only for the guidance of intending purchasers of lessees, and do not constitute any part of an offer or contract. Details are given without any responsibility, and any intending purchasers, lessees or third parties should not rely on them as inspection or otherwise as to the correctness of each of them. We have not carried out a structural survey and the services, appliances and specific fittings have not been tested. All photographs, measurements, floor plans and distances referred to are given as a guide only and should not be relied upon for the purchase of carpets or any other fixtures statements or representations of fact, but must satisfy themselves by or of fittings, gardens, roof terraces, balconies and communal gardens as well as tenure and lease details cannot have their accuracy guaranteed for intending purchasers. Lease details, service ground rent (where applicable) are given as a guide only and should be checked and confirmed by your solicitor prior to exchange of contracts. no person in the employment of Anthony Webb has any authority to make any representation or warranty whatever in relation to this property.

348 Green Lanes, Palmers Green, London N13 5TJ
020 8882 7888
palmersgreen@anthonywebb.co.uk
anthonywebb.co.uk

Anthony Webb
ESTATE AGENTS