



13 Sherwood Drive, Skellow , Doncaster, DN6 8NY

£175,000 - £185,000 Guide Price!! This two-bedroom semi-detached bungalow offers comfortable, well-planned living in a highly sought-after residential area, ideal for a range of buyers.

The property features a spacious and inviting lounge area, perfect for both relaxing and entertaining, alongside a well-maintained kitchen and a shower room. Both bedrooms are generously proportioned, with the second bedroom benefiting from patio doors that open directly onto the rear garden—creating a seamless connection between indoor and outdoor living.

Externally, the home continues to impress with a lovely, private rear garden, ideal for enjoying warmer months. Additional benefits include off-road parking and a detached garage, providing excellent storage and convenience.

Offered to the market with no onward chain, this property is ready for immediate occupation. It is perfectly positioned close to local amenities and benefits from excellent transport links, with easy access to the A1 and M18 motorway networks.

Council Tax Band: B
EPC Rating: To Follow

Guide price £175,000

13 Sherwood Drive, Skellow , Doncaster, DN6 8NY



- Two-bedroom semi-detached bungalow
- Well-proportioned bedrooms throughout
- Off-road parking for added convenience
- Council tax band: B & EPC rating: D
- Spacious and inviting lounge area
- Bedroom two with patio doors opening onto the rear garden
- Detached garage
- Shower room
- Lovely, private rear garden ideal for outdoor enjoyment
- Situated in a sought-after residential area close to local amenities

Kitchen

7'4" x 14'8" (2.26 x 4.49)

Lounge

12'2" x 15'7" (3.72 x 4.76)

Master Bedroom

10'8" x 13'5" (3.27 x 4.10)

Bedroom 2

9'1" x 8'3" (2.77 x 2.53)

Shower Room

5'5" x 6'5" (1.67 x 1.98)

Hallway

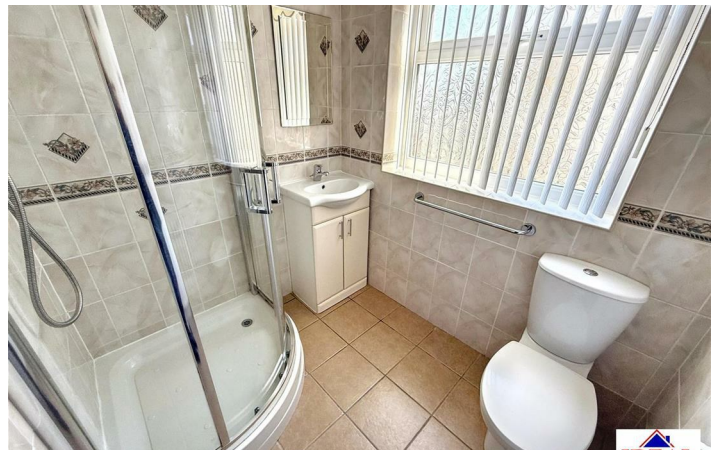
5'3" x 4'7" (1.61 x 1.40)

Important Information



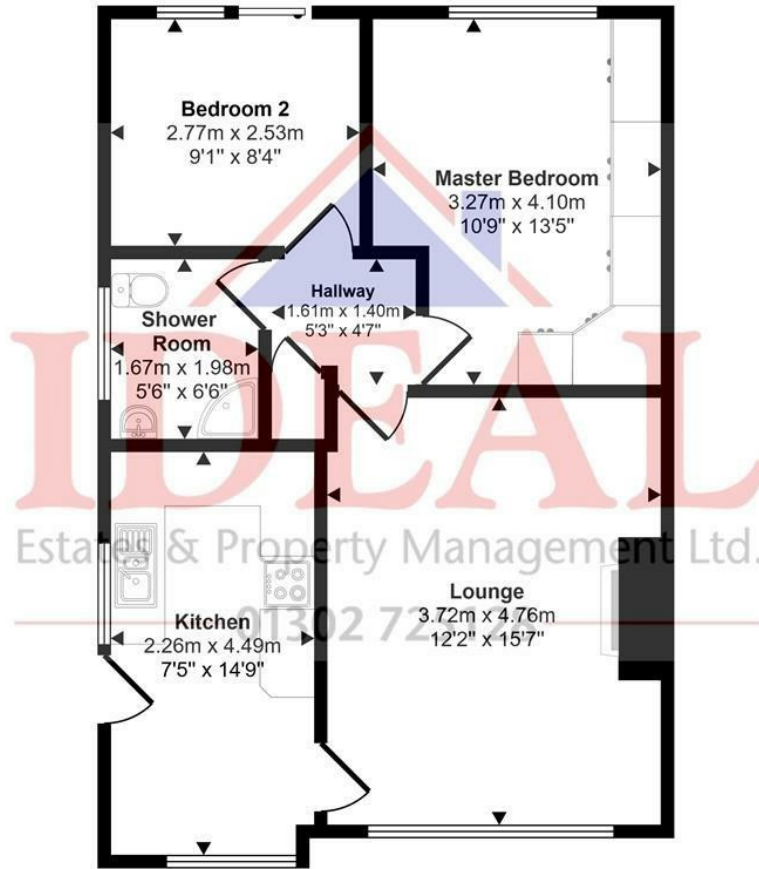
Directions

Skellow is a village in the Doncaster district, in the county of South Yorkshire, England. Historically part of the West Riding of Yorkshire, the village is roughly 5 miles north-west of Doncaster. The village falls in the Askern Spa Ward of Doncaster MBC. To the north and south is mixed farmland, the A1 runs immediately along the western edge of the village, and to the east Skellow merges with the adjacent village of Carcroft along the B1220 road.



Floor Plan

Approx Gross Internal Area
56 sq m / 603 sq ft



Floorplan

This floorplan is only for illustrative purposes and is not to scale. Measurements of rooms, doors, windows, and any items are approximate and no responsibility is taken for any error, omission or mis-statement. Icons of items such as bathroom suites are representations only and may not look like the real items. Made with Made Snappy 360.

These particulars, whilst believed to be accurate are set out as a general outline only for guidance and do not constitute any part of an offer or contract. Intending purchasers should not rely on them as statements of representation of fact, but must satisfy themselves by inspection or otherwise as to their accuracy. No person in this firm's employment has the authority to make or give any representation or warranty in respect of the property.

