



THACKERS WAY, DEEPING ST JAMES, PE6 8HP
£255,000 FREEHOLD

A much loved three bedroom semi detached home set along this popular roadway with amenities and schools' minutes' walk away, with a spacious living dining room leading to the conservatory, a refitted kitchen, modern bathroom suite, and three bedrooms, now ready for new owners and its next chapter.

Market Deeping | 01778 347098 | marketdeeping@winkworth.co.uk

Winkworth

for every step...

winkworth.co.uk



ACCOMMODATION

Across the gravelled driveway to the front door and through to;

ENTRANCE HALL

A welcoming space with radiator, power points, understairs storage cupboard, finished with tiled flooring

LIVING DINING ROOM

11'1 x 22'9 with UPVC window to front aspect, radiator, power points, TV point, double doors through to;

CONSERVATORY

9'7 x 8'7 with polycarbonate roof, power points, double doors to garden

KITCHEN

8'4 x 8'8 with UPVC window to rear aspect, refitted with a range of wall and base level storage units, integrated fridge/freezer, built in gas hob with extractor above, built in electric oven, built in microwave, space for washing machine, power points, coving to plastered ceiling, recessed ceiling spotlights, finished with tiled flooring, door to garden

LANDING

Built in airing cupboard, access to loft space, air conditioning unit

BEDROOM ONE

9'11 x 11'8 with UPVC window to front aspect, radiator, power points, built in double wardrobe

BEDROOM TWO

11 x 10'11 with UPVC window to rear aspect, radiator, power points

BEDROOM THREE

8'4 x 7'1 with UPVC window to front aspect, radiator, power points

BATHROOM

With frosted UPVC window to rear aspect, with three-piece suite with close coupled wc, pedestal wash hand basin, panelled bath with electric shower over, recessed ceiling spotlights, full height wall tiling, heated towel rail, tiled flooring

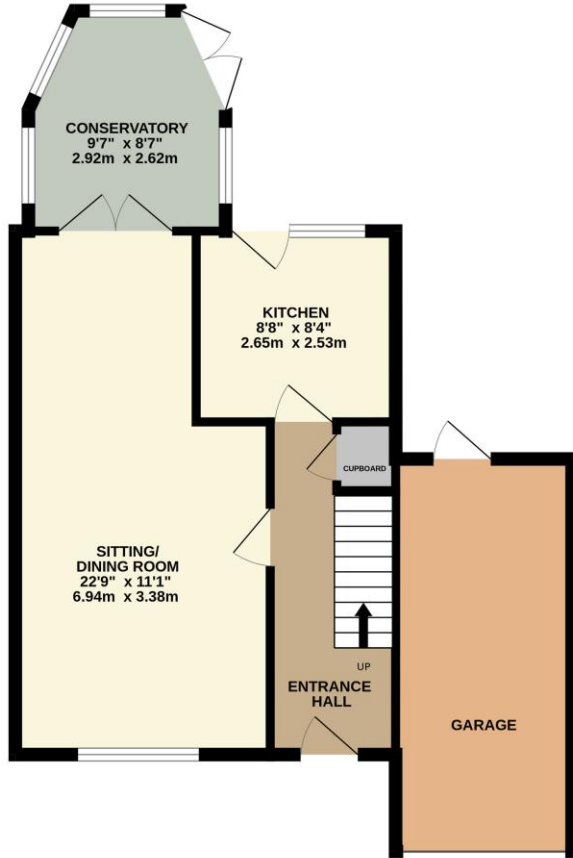
OUTSIDE

The front of the property offers gravelled driveway parking for up to three vehicles and leads to the single garage with electric roller

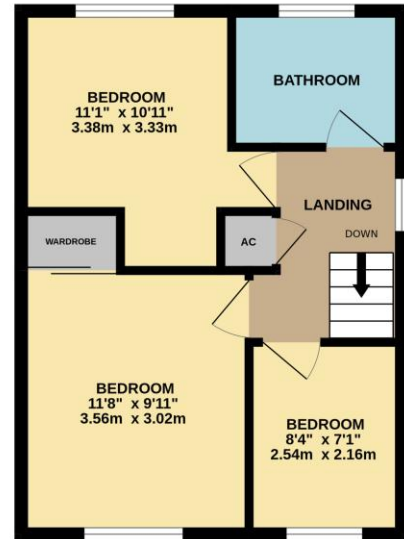
door, EV charging point. The rear garden is enclosed by fencing to side and rear aspect, patio seating area, mainly laid to lawn, raised decking area providing a second seating space, timber garden shed.



GROUND FLOOR
581 sq.ft. (54.0 sq.m.) approx.



1ST FLOOR
377 sq.ft. (35.0 sq.m.) approx.



TOTAL FLOOR AREA : 958 sq.ft. (89.0 sq.m.) approx.

Whilst every attempt has been made to ensure the accuracy of the floorplan contained here, measurements of doors, windows, rooms and any other items are approximate and no responsibility is taken for any error, omission or mis-statement. This plan is for illustrative purposes only and should be used as such by any prospective purchaser. The services, systems and appliances shown have not been tested and no guarantee as to their operability or efficiency can be given.
Made with Metropix ©2025

This floorplan is for illustration purposes only and is not to scale. The position and size of doors, windows, appliances and other features are approximate.

Energy Efficiency Rating		
	Current	Potential
Very energy efficient - lower running costs		
A (92+)		
B (81-91)		
C (69-80)		
D (55-68)		
E (39-54)		
F (21-38)		
G (1-20)		
Not energy efficient - higher running costs		
England & Wales	77	83
EU Directive 2002/91/EC		

Winkworth
for every step...

Market Deeping | 01778 347098 | marketdeeping@winkworth.co.uk

winkworth.co.uk

Winkworth wishes to inform prospective buyers and tenants that these particulars are a guide and act as information only. All our details are given in good faith and believed to be correct at the time of printing but they don't form part of an offer or contract. No Winkworth employee has authority to make or give any representation or warranty in relation to this property. All fixtures and fittings, whether fitted or not are deemed removable by the vendor unless stated otherwise and room sizes are measured between internal wall surfaces, including furnishings.