

Malpas Road, Wallasey

£265,000 Council Tax Band B EPC Rating D

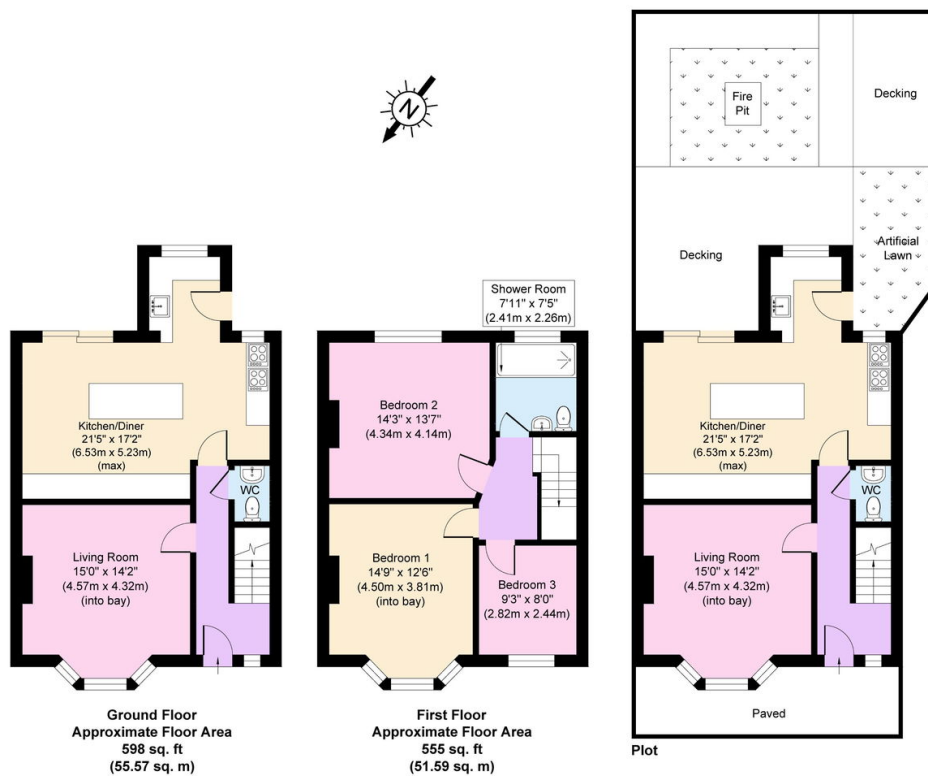
 3  1  2



What an impressive and simply stunning family home where just the garden alone could sell it! This attractive three-bedroom semi-detached abode boasts a lovely mix of original and modern upgrades including the open plan dining kitchen with bi-fold doors bringing the superb garden into play. The South facing sunny garden will have you calling out "I've got a text!" as it's giving Love Island style and summer vibes. Interior: vestibule, hallway, downstairs WC, living room and open plan dining kitchen on the ground floor. Upstairs there are three bedrooms and a modern recently installed shower room. Complete with a good-sized loft space, double glazing and central heating. Exterior: fabulous South facing garden. A must-see home – it's your type on paper!

Key Features

- Stunning Semi Detached
- Superb South Facing Garden
- Open Plan Dining Kitchen
- Good Sized Loft Space
- Council Tax Band B
- Three Bedrooms
- Stylish Refitted Shower Room
- Downstairs WC
- Dbl Glazing & GCH
- EPC Rating D



Copyright V360 Ltd 2026 | www.houseviz.com