



Summer Avenue, KT8

£1,295,000

Dexters



Summer Avenue, KT8

A rare opportunity to acquire a beautifully refurbished four bedroom family home on one of East Molesey's most sought after residential streets, offering exceptional private rear views over The Ember and direct access to the river.

Extensively renovated throughout, the property combines generous, light filled accommodation with high quality finishes across four bedrooms and three bathrooms. At the heart of the home is a spectacular extended kitchen and family living space, featuring Crittall doors that open onto a well maintained West facing garden perfectly positioned to capture the afternoon and evening sun, with the river beyond providing a truly memorable backdrop.

The ground floor also benefits from two reception rooms, a separate utility area, and a modern shower room. Upstairs, four well proportioned bedrooms are served by two further bathrooms. The property has been comprehensively updated including a new kitchen, new boiler and heating system, rewired electrics with LED lighting, and new flooring and carpets throughout meaning a new owner can move in straight away.

To the front, the driveway offers plenty of off street parking, plus there is a fully sized garage. While the location places you within easy reach of the boutiques, restaurants and cafés of Hampton Court Village, the open acres of Bushy Park, and Hampton Court Palace itself. Hampton Court station is just 10 minutes away, offering fast links into London Waterloo.

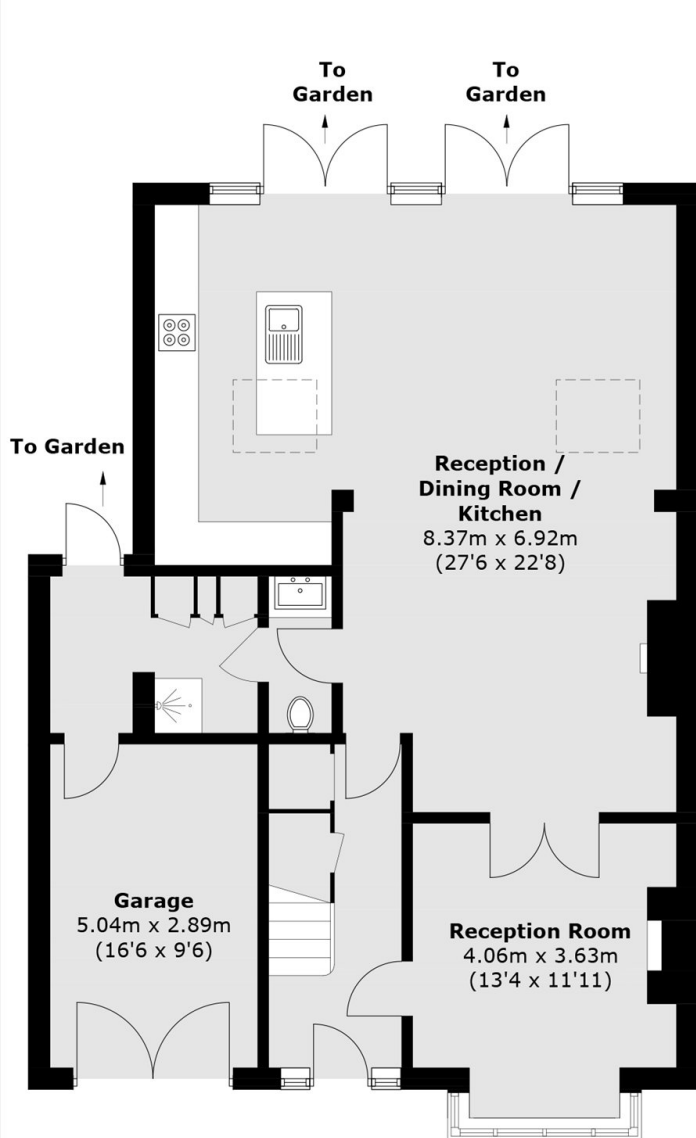
- Features**
- Four Bedrooms
 - Three Bathrooms
 - Off Street Parking
 - High Spec Finish
 - West Facing Garden
 - River Views



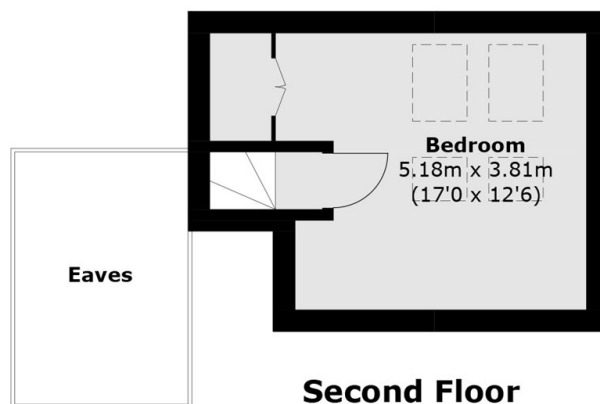




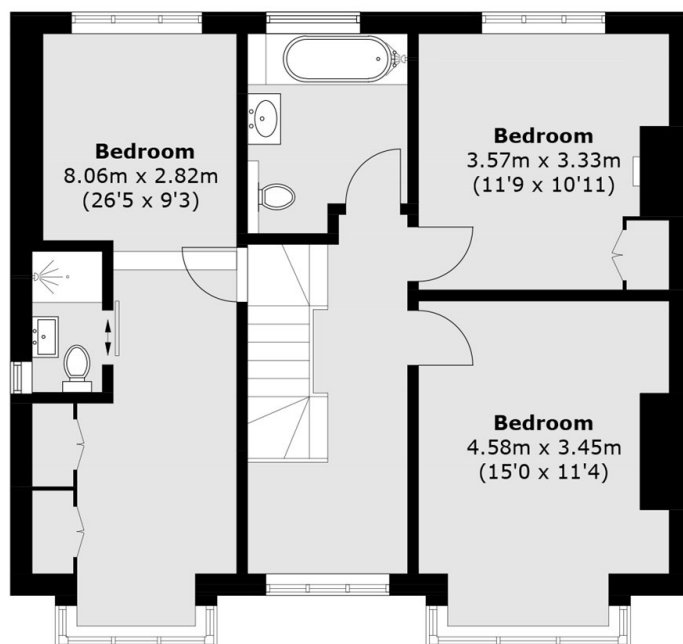
Summer Avenue, East Molesey, KT8



Ground Floor



Second Floor



First Floor

Total area (approx.): 183.8 sq. m (1,978.3 sq. ft)
(Including Garage / Excluding Eaves)