



**Marketing 27 Tudor House Duchess Walk, London, SE1
2SA**

 2  2  1  B



A spacious two bedroom apartment situated at the prestigious One Tower Bridge. Furnished to the highest of standard, this property comprises a large spacious reception, modern integrated kitchen, private balcony and large master bedroom with fitted wardrobes.

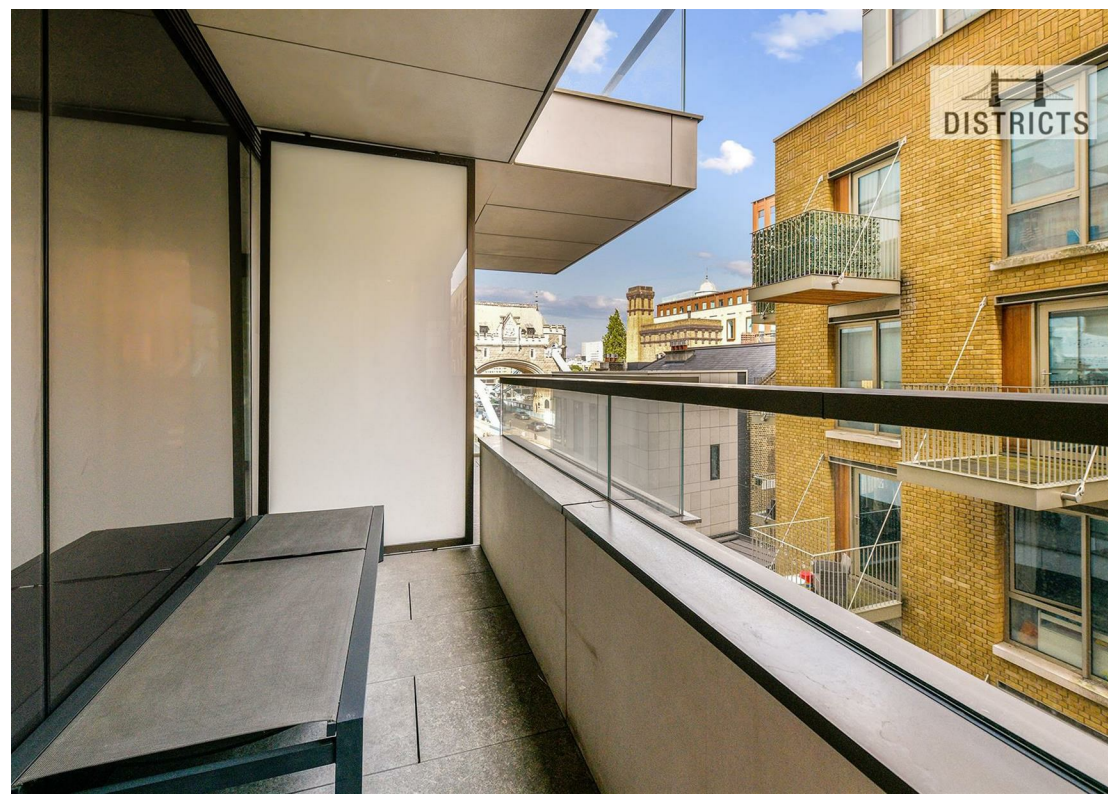
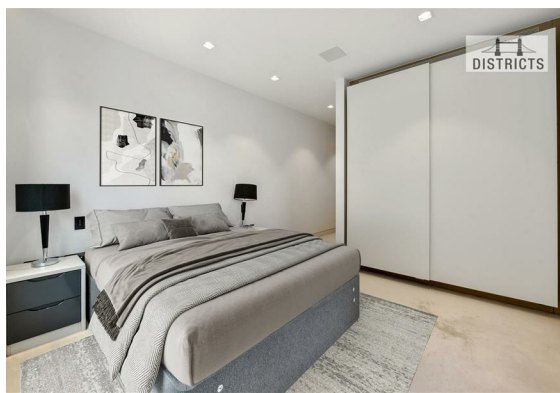
One Tower Bridge sits on the banks of the River Thames, and is considered one of the most sought after developments in London. London Bridge, Tower Hill and Tower Gateway are all within walking distance..

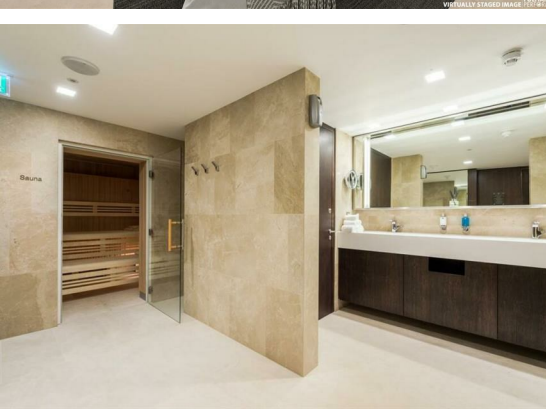
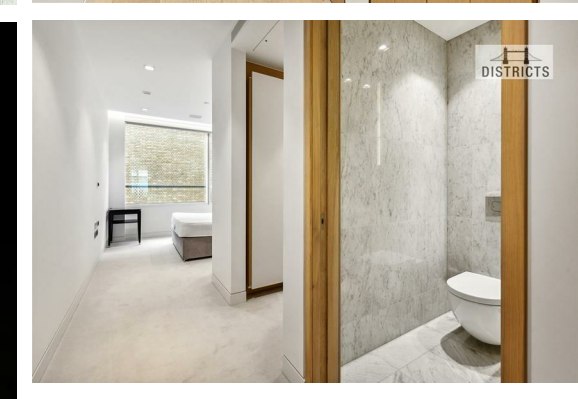
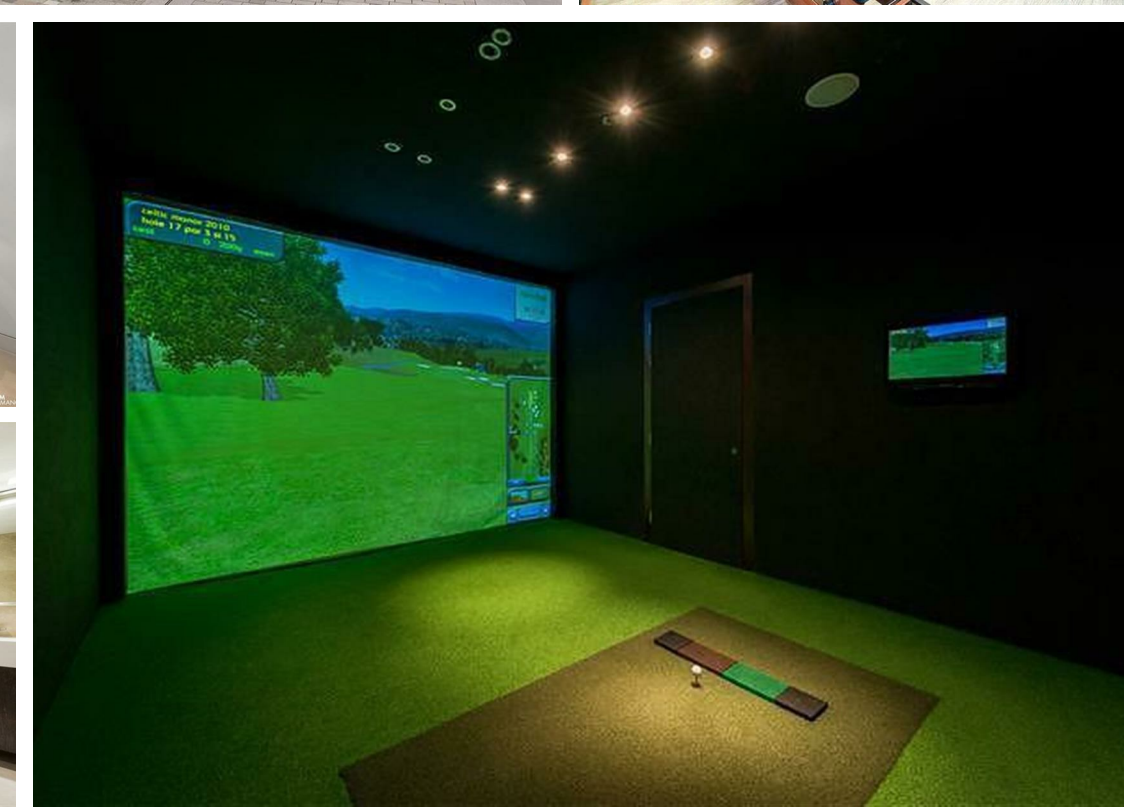
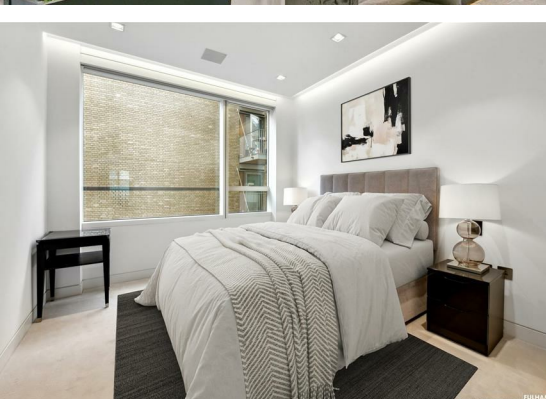
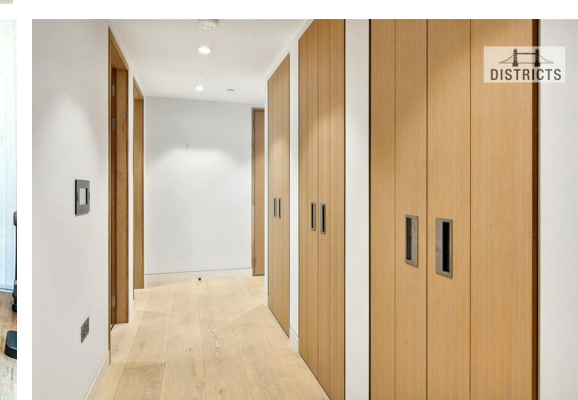
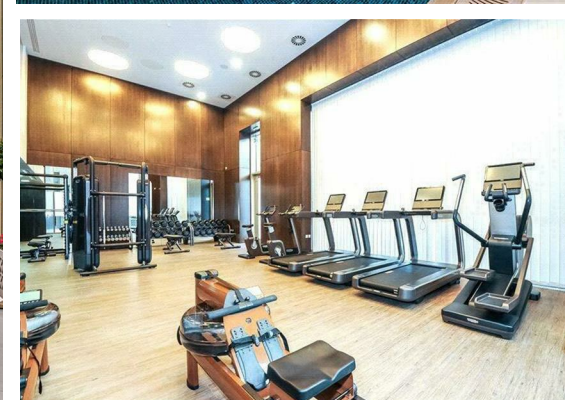
Residents also enjoy access to a 24-hour Harrods concierge, swimming pool, sauna, steam room, a state-of-the-art resident-only gym, virtual golf simulator and a business lounge.

Minimum contract: 12 months
Change of contract fee: £50 including VAT
Council Tax: Southwark - E
Lift access | Cladding: EWS1 Certificate
Ask Agent
Holding Deposit - £1,000 (1 weeks rent, subject to offer agreed)

Electricity supply – Mains | Cold Water supply – Mains | Sewerage – Mains | Hot water, heating & comfort cooling – Mains | Internet: Fibre


To check broadband and mobile phone coverage please visit Ofcom.







Total area (approx): (1,053.8 sq. ft)

Energy Efficiency Rating		
	Current	Potential
Very energy efficient - lower running costs		
(92 plus) A		
(81-91) B	85	85
(69-80) C		
(55-68) D		
(39-54) E		
(21-38) F		
(1-20) G		
Not energy efficient - higher running costs		
England & Wales	EU Directive 2002/91/EC 	

These particulars, whilst believed to be accurate are set out as a general outline only for guidance and do not constitute any part of an offer or contract. Intending purchasers should not rely on them as statements of representation of fact, but must satisfy themselves by inspection or otherwise as to their accuracy. No person in this firm's employment has the authority to make or give any representation or warranty in respect of the property.