



**Guide Price**  
**£300,000**

**Freehold**

3x  1x  1x 

**Ronstan Gardens,  
Freshwater, Isle of  
Wight, PO40**

**OVER 60?**

Secure this property  
for up to **59% less!**

**Pittis**   
Helping you move forwards



## Main features

- Spacious detached bungalow with off road parking & garage
- Bright lounge with feature fireplace
- Colourful front & rear gardens, perfect for keen gardeners
- Conservatory, ideal for summer dining and enjoying sunsets
- Short walk to local transport links

## Accommodation

### GROUND FLOOR

Hallway

Lounge: 14'5 x 11'9 (4.40m x 3.58m)

Bedroom 1: 10'9 x 10'8 (3.28m x 3.25m)

Bedroom 2: 11'0 x 8'8 (3.36m x 2.64m)

Bedroom 3: 10'9 x 7'9 (3.28m x 2.36m)

Shower Room: 6'5 x 5'4 (1.96m x 1.63m)

Kitchen: 10'4 x 10'1 (3.15m x 3.08m)

Conservatory: 11'9 x 10'3 (3.58m x 3.13m)

### OUTSIDE

Front Garden

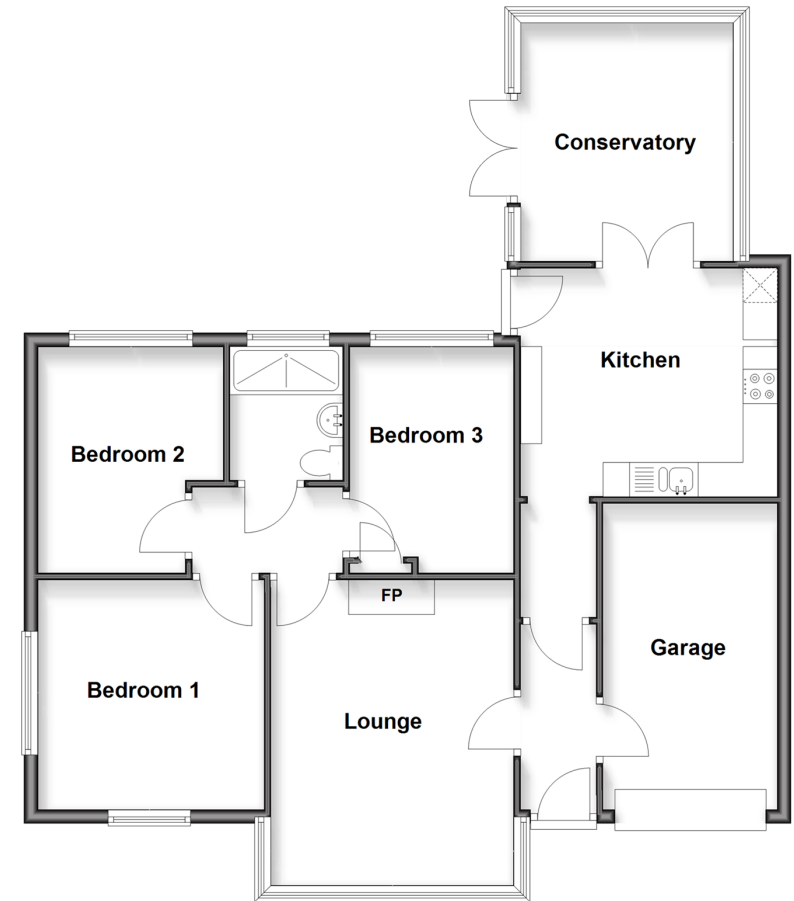
Driveway

Integral Garage: 16'2 x 8'3 (4.93m x 2.52m)

Shed

Rear Garden

**Ground Floor**  
Approx. 91.9 sq. metres (989.7 sq. feet)



**Call Freshwater - 01983 756222 ■ pittis.co.uk**

- Legal advice should be taken to verify fixtures/fittings, planning, alterations and/or lease details
- Appliances & services are untested, dimensions are approximate and floor plans are not to scale
- Through a Homewise Home For Life Plan people aged 60+ can secure this property for up to 50% less, by purchasing a Lifetime Lease



60216241/20251020/CG/CG