



Heather Drive, Pontefract WF8 2FJ

Welcome to

Heather Drive, Pontefract

Two-bedroom end town house in Pontefract, ideal for first time buyers. Entrance hall with ground floor WC, lounge with doors to enclosed rear garden, kitchen diner, two bedrooms and family bathroom. Parking front. Close to schools, transport links and amenities.



Entrance Hall

With a front entrance door, storage cupboard and gas central heating radiator.

Wc

With a low level flush WC, wash hand basin, vinyl flooring, tiled splash back, extractor fan and a gas central heating radiator.

Lounge

13' 4" x 9' (4.06m x 2.74m)

With a double door to the rear, window to the rear and two gas central heating radiators.

Kitchen

14' 11" x 6' 6" (4.55m x 1.98m)

A fitted kitchen consisting of wall, base and drawer units with laminate work surfaces over, stainless steel sink and half and drainer, extractor hood, extractor fan, stainless steel splash back, gas hob, electric oven, space for washing machine, fridge freezer and a window to the front.

Landing

With a window to the side and access to the loft.

Bedroom One

13' 4" x 9' 5" (4.06m x 2.87m)

With a window to the rear and a gas central heating radiator.

Bedroom Two

7' 9" x 9' 9" + Recess (2.36m x 2.97m + Recess)

With a window to the front, over stairs cupboard housing the boiler and a gas central heating radiator.

Bathroom

A fitted kitchen consisting of a low level flush WC, wash hand basin, bath with shower over, tiled around bath, vinyl flooring, extractor fan and a gas central heating radiator.

Front Garden

A tarmac driveway, paved path and fenced to one side.

Rear Garden

A lawned garage, paved patio, wooden shed, side access and timber fence surround.



view this property online williamhbrown.co.uk/Property/PON119698



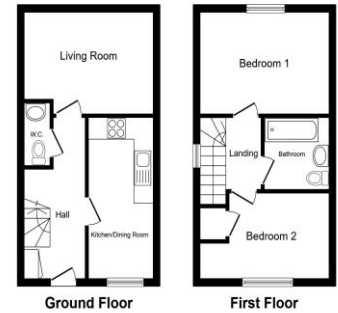
Welcome to

Heather Drive, Pontefract

- Two Bedroom End Town House
- Bathroom and Separate WC
- Enclosed Rear Garden
- Off Street Parking
- Excellent First Time Buyer Opportunity

Tenure: Freehold EPC Rating: B
Council Tax Band: B

£180,000



Please note the marker reflects the postcode not the actual property

view this property online williamhbrown.co.uk/Property/PON119698



Property Ref:
PON119698 - 0004

1. MONEY LAUNDERING REGULATIONS Intending purchasers will be asked to produce identification documentation at a later stage and we would ask for your co-operation in order that there is no delay in agreeing the sale. 2. These particulars do not constitute part or all of an offer or contract. 3. The measurements indicated are supplied for guidance only and as such must be considered incorrect. Potential buyers are advised to recheck measurements before committing to any expense. 4. We have not tested any apparatus, equipment, fixtures or services and it is in the buyers interest to check the working condition of any appliances. 5. Where an EPC, or a Home Report (Scotland only) is held for this property, it is available for inspection at the branch by appointment. If you require a printed version of a Home Report, you will need to pay a reasonable production charge reflecting printing and other costs. 6. We are not able to offer an opinion either written or verbal on the content of these reports and this must be obtained from your legal representative. 7. Whilst we take care in preparing these reports, a buyer should ensure that his/her legal representative confirms as soon as possible all matters relating to title including the extent and boundaries of the property and other important matters before exchange of contracts.

William H Brown is a trading name of Sequence (UK) Limited which is registered in England and Wales under company number 4268443, Registered Office is Cumbria House, 16-20 Hockliffe Street, Leighton Buzzard, Bedfordshire, LU7 1GN. VAT Registration Number is 500 2481 05.



william h brown



01977 791406



Pontefract@williamhbrown.co.uk



26 Market Place, PONTEFRAC, West Yorkshire,
WF8 1AT



williamhbrown.co.uk