



Connells

Sturmer Way
Borden Sittingbourne



Property Description

Nestled along the quiet, private residential road of Sturmer Way in Sittingbourne's desirable Borden and Grove Park area, this property offers an attractive opportunity for buyers seeking a peaceful yet well-connected home setting. Sturmer Way is a small, exclusive street comprising just six properties, creating a sense of privacy and community rarely found in suburban locations.

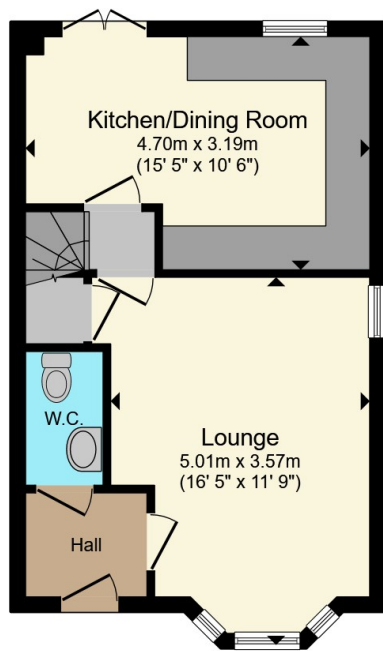
In typical town house fashion, accommodation is set over three floors with the ground flooring offering an entrance hall, downstairs cloakroom, good sized lounge and a well presented kitchen/breakfast area towards the rear of the house leading directly onto the rear garden. The first floor homes two good sized double bedrooms and the family bathroom with the main bedroom and en-suite located on the second floor. Outside this home offers a secluded rear garden and a driveway for two vehicles.

For your chance to view, please contact the sole agent Connells. 01795477859

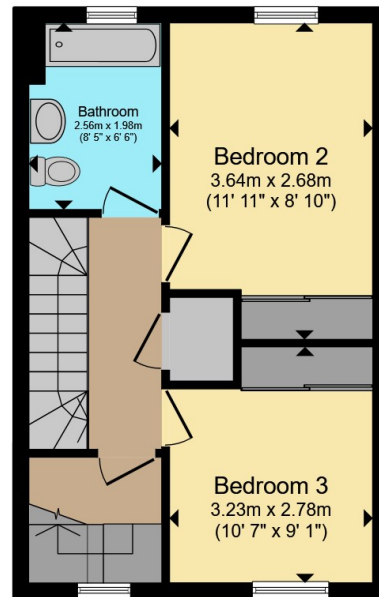




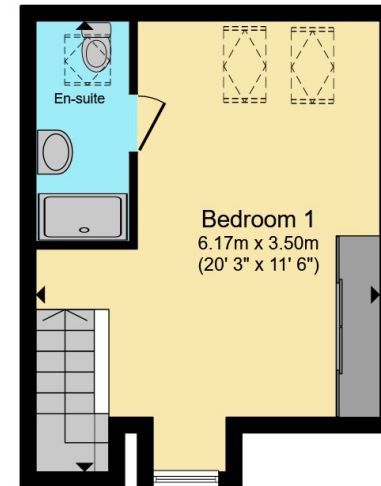




Ground Floor



First Floor



Second Floor

Total floor area 99.8 m² (1,074 sq.ft.) approx

This floor plan is for illustrative purposes only. It is not drawn to scale. Any measurements, floor areas (including any total floor area), openings and orientation are approximate. No details are guaranteed, they cannot be relied upon for any purpose and they do not form part of any agreement. No liability is taken for any error, omission or misstatement. A party must rely upon its own inspection(s). Powered by www.propertybox.io



To view this property please contact Connells on

T 01795 477859

E sittingbourne@connells.co.uk

68 High Street
SITTINGBOURNE ME10 4PB

EPC Rating: B Council Tax
Band: D

Tenure: Freehold

view this property online connells.co.uk/Property/SIT104183



1. MONEY LAUNDERING REGULATIONS Intending purchasers will be asked to produce identification documentation at a later stage and we would ask for your co-operation in order that there will be no delay in agreeing the sale. 2. These particulars do not constitute part or all of an offer or contract. 3. The measurements indicated are supplied for guidance only and as such must be considered incorrect. Potential buyers are advised to recheck measurements before committing to any expense. 4. We have not tested any apparatus, equipment, fixtures, fittings or services and it is in the buyers interest to check the working condition of any appliances.

Connells Residential is registered in England and Wales under company number 1489613, Registered Office is Cumbria House, 16-20 Hockliffe Street, Leighton Buzzard, Bedfordshire, LU7 1GN. VAT Registration Number is 500 2481 05.

See all our properties at www.connells.co.uk | www.rightmove.co.uk | www.zoopla.co.uk

Property Ref: SIT104183 - 0009