



HORMEAD ROAD, W9

£485,000

One bedroom apartment
Private Terrace
Directly overlooking Grand Union
Canal
Walking distance to Portobello Road
Approximately 520sq ft

@marshandparsons
marshandparsons.co.uk

MARSH &
PARSONS



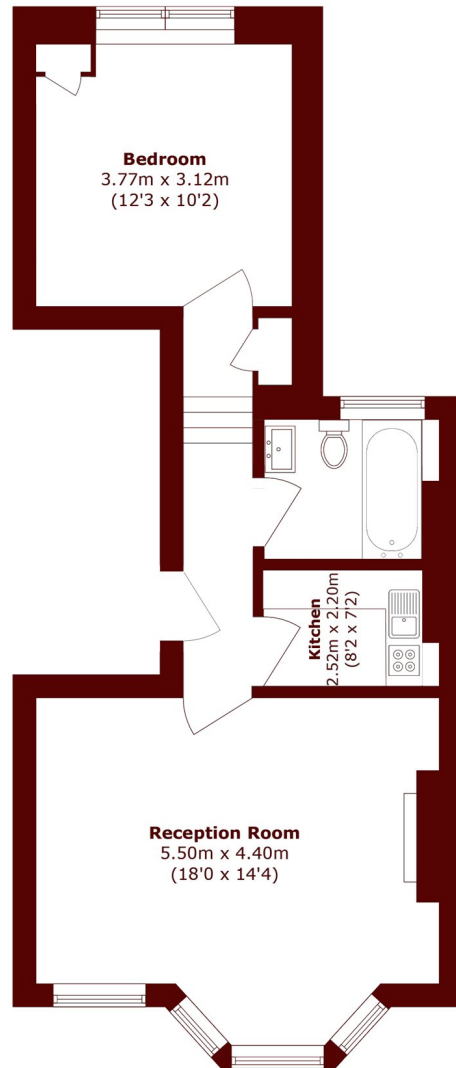
ABOUT THE PROPERTY

A beautifully presented one bedroom apartment set within an elegant period conversion, offering bright and well-proportioned accommodation throughout. The property features a generous reception room with a striking bay window, a separate fully fitted kitchen, bathroom and a comfortable double bedroom. A private terrace overlooking the Grand Union Canal provides a rare and highly desirable outdoor retreat.

Ideally located just moments from the scenic Grand Union Canal. Residents enjoy easy access to the vibrant shops, cafés, and restaurants of Maida Vale and Notting Hill, as well as the iconic markets of Golborne and Portobello Road, with Westbourne Park station



STEP INSIDE HORMEAD ROAD



Total area (approx.): 48.4 sq. m (520.9 sq. ft)

Little Venice
020 7993 3050

Energy Rating: C We aim to make our particulars both accurate and reliable. However, they are not guaranteed; nor do they form part of an offer or contract. If you require clarification on any points then please contact us, especially if you're traveling some distance to view. Please note that appliances and heating systems have not been tested and therefore no warranties can be given as to their good working order

**MARSH &
PARSONS**