
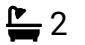



14 Harvey house Masterson Close,

£275,000

 2  2  1

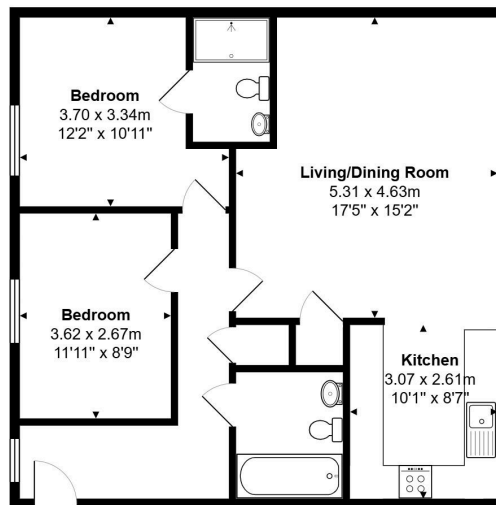


Situated in the vibrant Wellesley development, is this third floor apartment with outstanding views, offered to the market in immaculate condition, with the added benefit of two allocated parking spaces. - No Onward Chain

## Key Features

- Constructed In 2022
- No Onward Chain
- Third Floor Apartment
- Two Double Bedrooms
- Immaculately Presented Throughout
- En Suite to the Principal Bedroom
- Fitted Family Bathroom
- Two Allocated Parking Spaces
- Short Walk to Picturesque Walks & Schools
- Easy Access to Major Road Links/Trains to London

14, Harvey House, 8, Masterson Close, Wellesley, Aldershot, GU11 4GH



Total Area: 72.0 m<sup>2</sup> ... 775 ft<sup>2</sup>

All measurements are approximate and for display purposes only