

# FLETCHERS

## ESTATE AGENTS

---



### Sinclair Road, W14

£600,000

\*\*\*OFFERS IN EXCESS OF\*\*\* A wonderful raised ground floor flat situated within a quiet and exceptionally popular, tree-lined street in Brook Green. This spacious conversion flat has been refurbished to a high standard but still retains its charm. The property comprises of a bright, semi-open plan kitchen/reception room complete with an attractive modern fitted kitchen with wooden flooring throughout. The reception room is spacious, with excellent ceiling height and a large bay window allowing for plenty of natural light.

The property also benefits from plenty of built in storage along the corridor and a separate toilet. At the rear of the property there is a generous double bedroom complete with built in storage and a feature bay window allowing for plenty of natural light along with a spacious bathroom.

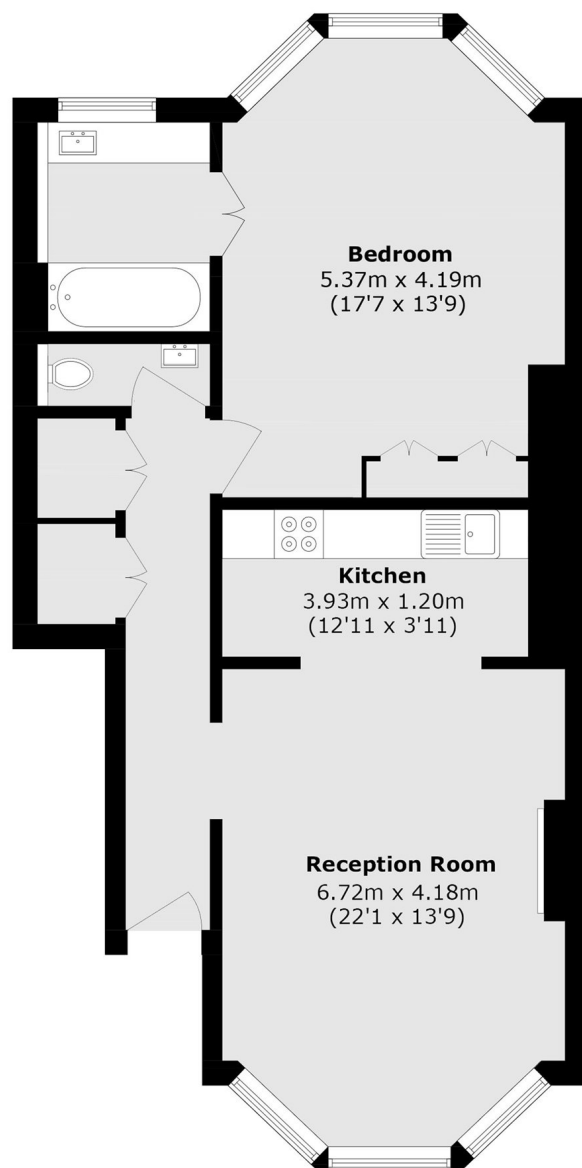
Perfect for those looking for a permanent home or a pied a terre in an excellent location, the property is offered to the market with a share of the freehold and no onward chain.

Sinclair Road is a very popular street in the heart of Brook Green. Superbly positioned for easy access to the green open spaces of Holland Park & Brook Green. It is also excellently positioned for the amenities, bars and restaurants of both Westfield Shopping Centre & Kensington High Street as well as the more independent, eclectic boutiques of Blythe Road. It is also under half a mile from Shepherds Bush Station (Central and Overground Lines). Being located on the same road as Kensington Olympia, it is well positioned to benefit from the ongoing redevelopment here.

• Raised Ground Floor • Large One Bedroom • Share of Freehold • Large Bay Windows • Heart of Brook Green • Excellent Condition Throughout •

# FLETCHERS

ESTATE AGENTS



Total area (approx.): 71.5 sq. m (769.6 sq. ft)

Fletchers Brook Green Sales  
144 Shepherds Bush Road, Hammersmith, London, W6 7PB  
020 7603 1415  
[brookgreensales@fletcherestates.com](mailto:brookgreensales@fletcherestates.com)

Energy Rating: C. We aim to make our particulars both accurate and reliable. However they are not guaranteed; nor do they form part of an offer or contract. If you require clarification on any points then please contact us, especially if you're traveling some distance to view. Please note that appliances and heating systems have not been tested and therefore no warranties can be given as to their good working order.