

1A Old Haymarket 73-89 Victoria Street, Liverpool, L1 6AF
Tel: 0151 305 2577
Email: liverpoolsales@ascendproperties.com
www.ascendproperties.com

Ascend

Built on higher standards



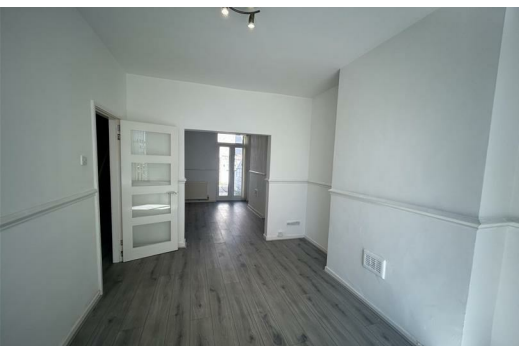
Ash Street, Liverpool

£850 Per Month

A spacious and characterful three-bedroom end-terrace property available to rent in a convenient residential location close to local amenities and transport links. Positioned on a prominent corner plot, this attractive home offers generous living accommodation ideal for families, couples, or working professionals.

The property features a bright and welcoming interior with well-proportioned rooms throughout, including a spacious lounge, fitted kitchen, three good-sized bedrooms, and a family bathroom. Large windows allow for plenty of natural light, creating a comfortable and homely atmosphere.

Externally, the property benefits from on-street parking nearby. Located within easy reach of schools, shops, supermarkets, and public transport routes, the property also offers excellent access to Liverpool City Centre and surrounding areas.



30 Ash Street, Liverpool, Merseyside, L20 3HA



Energy Efficiency Rating		Environmental Impact (CO ₂) Rating	
Current	Potential	Current	Potential
83	85	B	B