



## Wheatstone Gardens, W10

£6,000 Per calendar month

**Dexters**



## Wheatstone Gardens, W10

A beautiful three bedroom apartment on the second floor of the newest development in W10. The open concept kitchen and living space is ideal for entertaining, with two balconies and wooden floors throughout. There are two large double bedrooms, both with en suites, plus a smaller third bedroom which is still big enough for a double bed. The entrance hallway has a large family bathroom and fantastic storage throughout. The building has step free and lift access to the apartment making it the perfect family home overlooking the park.

Ideally located within the lively area of Golborne Road and Portobello Market, offering access to shops and amenities including Laylas Bakery and The Fat Badger pub.

### Features

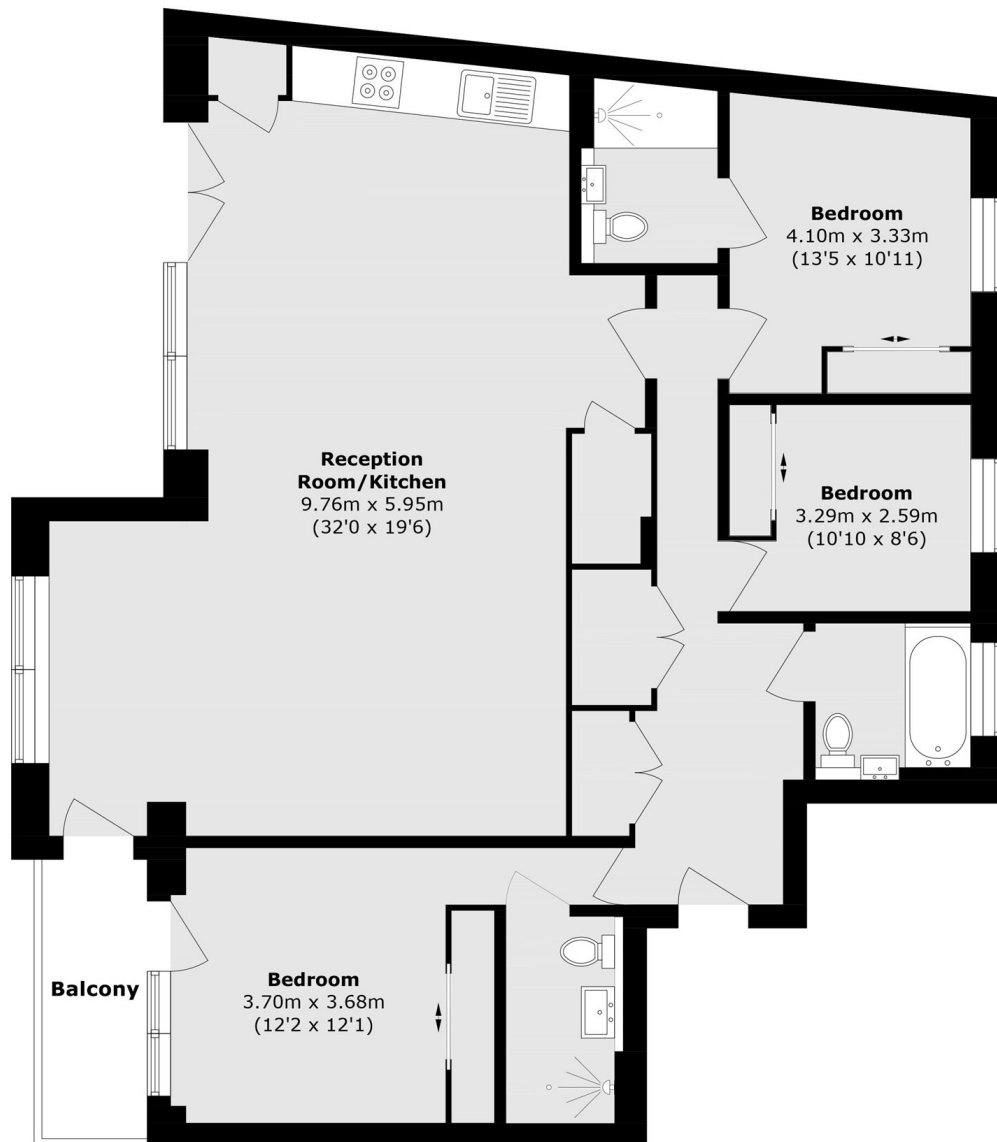
- Three Bedrooms
- Three Bathrooms
- Unfurnished
- Brand New Development
- Lift Access
- Heating & Hot Water Included







# Wheatstone Gardens, LONDON, W10



## Second Floor

Total area (approx.): 128.4 sq. m (1,382.0 sq. ft)  
Balcony area (approx.): 5.3 sq. m (57.0 sq. ft)