



RESIDENTIAL ESTATE AGENTS
PROPERTY LETTING & MANAGING AGENTS
VALUERS & PROPERTY CONSULTANTS
CHARTERED SURVEYORS

01722 336422
www.hwwhite.co.uk WEB



Fisherton Street,

£1,000 PCM

110b Fisherton Street, Salisbury, Wiltshire, SP2 7QY



Energy Efficiency Rating		Current	Potential
Very energy efficient - lower running costs			
(92 plus) A			98
(81-91) B		82	
(69-80) C			
(55-68) D			
(39-54) E			
(21-38) F			
(1-20) G			
Not energy efficient - higher running costs			
England & Wales		EU Directive 2002/91/EC	

Whites are proud to present this modern two bedroom mews cottage, quietly tucked away via an alleyway off Fisherton Street - offers the best of both worlds — a quiet spot tucked away in the city centre, while still being only a short walk from Salisbury train station.

Accommodation comprising:

Front door into inner hall, two ground floor double carpeted bedrooms and well specified ground floor bathroom with thermostatic shower over bath.

Stairs to the first floor with one large, open plan living area with oak flooring and big vaulted ceiling with feature beams and Velux giving extra light.

Range of fitted kitchen units in a U-shape incorporating integral fridge/freezer, dishwasher and washer/dryer, gas hob and double electric oven. Sitting/dining area at the other end with the stairs dividing the two.

The property has been well specified with latest generation of double glazed sash windows, unfurnished and benefits from an EPC rating of B.

Description

Whites are proud to present this modern two bedroom mews cottage, quietly tucked away via an alleyway off Fisherton Street - offers the best of both worlds — a quiet spot tucked away in the city centre, while still being only a short walk from Salisbury train station.

Accommodation comprising:

Front door into inner hall, two ground floor double carpeted bedrooms and well specified ground floor bathroom with thermostatic shower over bath.

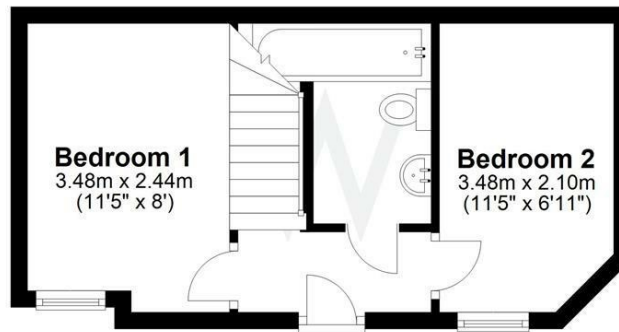
Stairs to the first floor with one large, open plan living area with oak flooring and big vaulted ceiling with feature beams and Velux giving extra light.

Range of fitted kitchen units in a U-shape incorporating integral fridge/freezer, dishwasher and washer/dryer, gas hob and double electric oven. Sitting/dining area at the other end with the stairs dividing the two.

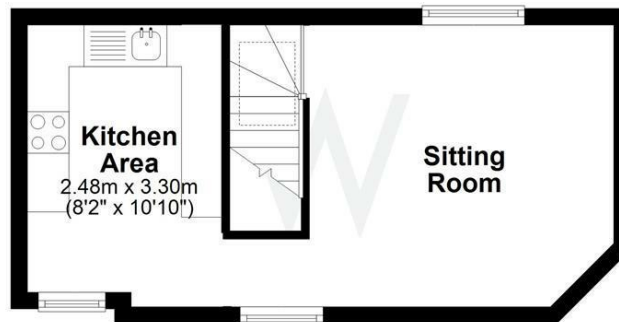
The property has been well specified with latest generation of double glazed sash windows, unfurnished and benefits from an EPC rating of B.

A Note

Ground Floor



First Floor



01722 336422