

# LIVERMORES

THE ESTATE AGENTS

1 Bedrooms

Flat - Retirement

Offers In The Region Of

£275,000

Located in

Dartford



[www.livermores.co.uk](http://www.livermores.co.uk)



# 5 Keyes Lodge King Edward

Dartford DA1 2FH



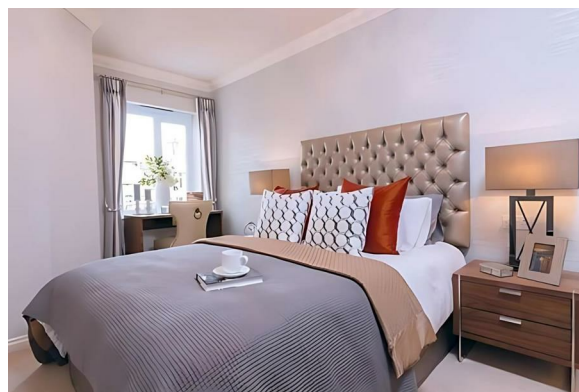
Nestled in the charming area of King Edward Avenue, Dartford, this delightful ground floor flat is an ideal choice for those seeking a comfortable retirement home. This property boasts a spacious lounge/diner, perfect for relaxation and entertaining guests. The modern kitchen is equipped with integrated appliances, making meal preparation a breeze.

With one well-proportioned bedroom, this flat offers a peaceful retreat for rest and relaxation. The bathroom is conveniently located, ensuring ease of access. The property is chain-free, allowing for a smooth and hassle-free purchase process.

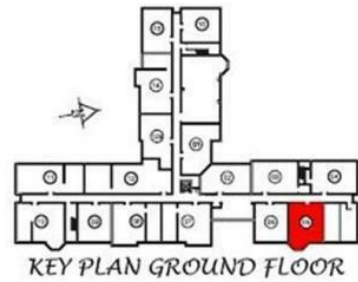
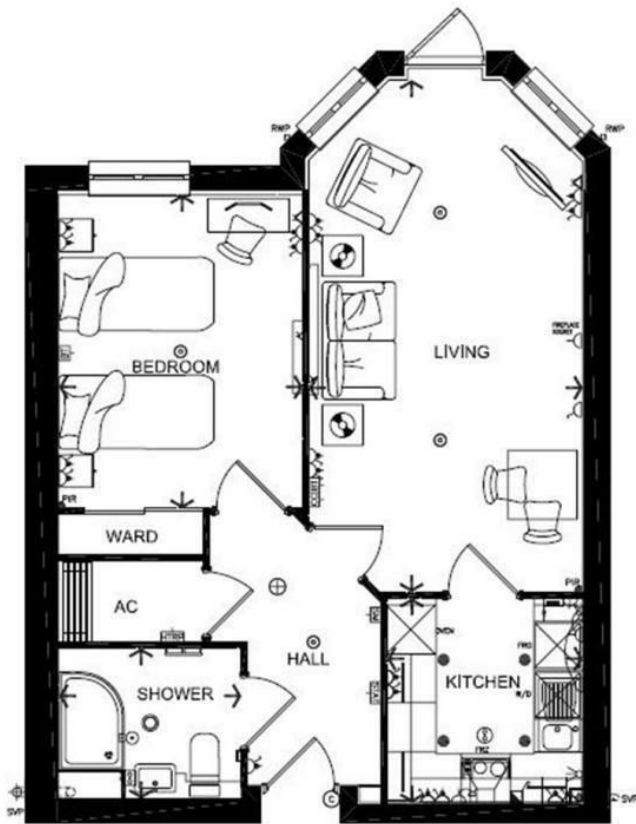
This flat is not only practical but also offers a welcoming atmosphere, making it a perfect place to call home. Whether you are looking to downsize or simply seeking a new beginning, this property presents an excellent opportunity in a desirable location. Don't miss the chance to make this lovely flat your own.

# 5 Keyes Lodge King Edward

£275,000 Leasehold



- OFFERS IN THE REGION OF £275,000
- GROUND FLOOR
- MODERN KITCHEN WITH INTEGRATED APPLIANCES
- SPACIOUS LOUNGE/DINER
- SIMILAR PROPERTIES REQUIRED
- ONE BEDROOM RETIREMENT APARTMENT
- RETIREMENT LIVING OVER 55'S ONLY
- NO CHAIN
- COMMUNAL AREAS FOR SOCIALISING
- COUNCIL TAX BAND 'C', EPC RATING 'B'



## Council Tax Band C

## Local Authority DARTFORD

Agents Note: Whilst every care has been taken to prepare these particulars, they are for guidance purposes only. All measurements are approximate and are for general guidance purposes only and whilst every care has been taken to ensure their accuracy, they should not be relied upon and potential buyers/tenants are advised to recheck the measurements.

Energy Efficiency Rating		
	Current	Potential
Very energy efficient - lower running costs		
(92 plus) <b>A</b>		
(81-91) <b>B</b>	<b>83</b>	<b>83</b>
(69-80) <b>C</b>		
(55-68) <b>D</b>		
(39-54) <b>E</b>		
(21-38) <b>F</b>		
(1-20) <b>G</b>		
Not energy efficient - higher running costs		
<b>England &amp; Wales</b>	EU Directive 2002/91/EC	

1 Hythe Street  
Dartford  
Kent  
DA1 1BE



dartford@livermores.co.uk

01322 228090

www.company.co.uk